

# MASTERINGSAP

An SAPinsider Company

Mastering SAP Collaborate

22 - 23 May, 2023

Crown Promenade, Melbourne

# Managing Quality and Efficiency with SAP Cloud ALM

Philip Wallingford

Former General Manager, Group Technology  
Eastland Group

**#MasteringSAP #MasteringSAPCollaborate**

# Eastland Group

An aerial photograph showing a coastal town and harbor. The town is built on a peninsula, with a large harbor area in the foreground. The water is a vibrant blue-green color. The town features a mix of residential houses, commercial buildings, and industrial structures. A large pier extends into the harbor, and a ship is docked at the end of it. The surrounding landscape is a mix of green fields and urban development. The sky is clear and blue.



# Context to SAP ALM

- Overview of Eastland Group and it's operations
- How we landed with SAP & Project Scope
- SAP Partner – Realtech. Why we appointed Realtech
- Look at Eastland's SAP Solution
- Cloud ALM and benefits it has delivered



# Eastland Network





# Eastland Generation





# Eastland Port



# Gisborne Airport



# SAP: How we got here...

- 2020 ELG deployed S/4HANA on premise solution
- Project Scope
  - Asset Management
  - Finance
  - Procurement
  - Sales
  - HR mini master
  - Timesheets
- Expense Management (SAP Concur)



# Realtech

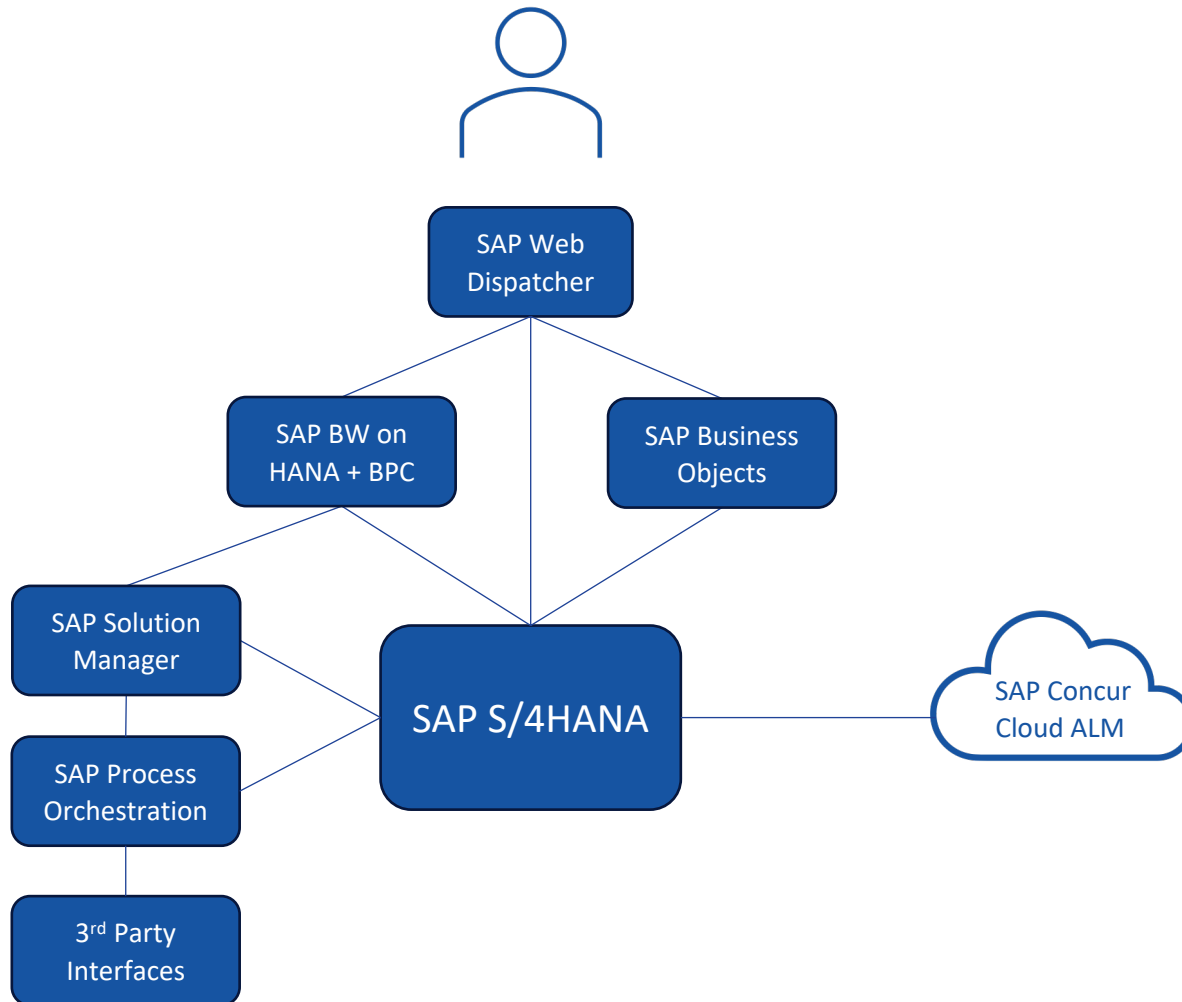
- 2022 Realtech selected as AMS support partner
- Realtech takes a proactive approach to our SAP landscape
  - They are responsive, attentive and offer local support
- Realtech recommended we deploy SAP Cloud ALM

*REALTECH*





# SAP Landscape



## Eastland Group

SAP Systems hosted in Azure.

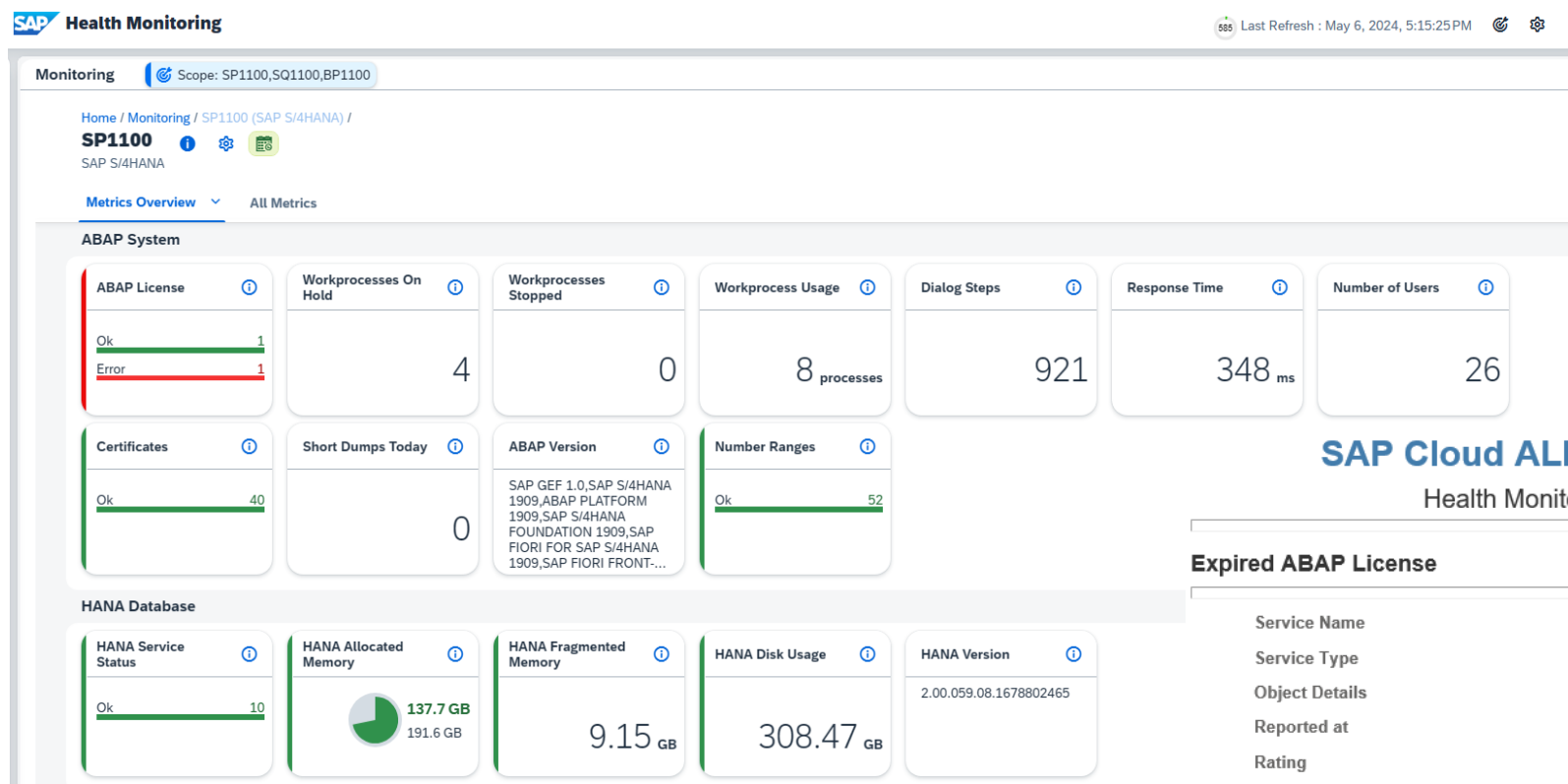
- SAP S/4HANA
- SAP BW on HANA + BPC
- SAP Business Objects
- SAP Process Orchestration
- SAP Solution Manager
- SAP Web Dispatcher

## SAP Cloud Services

- SAP Concur
- SAP Cloud Application Lifecycle Management



# Health Monitoring



## SAP Cloud ALM Notification

### Health Monitoring Event

#### Expired ABAP License

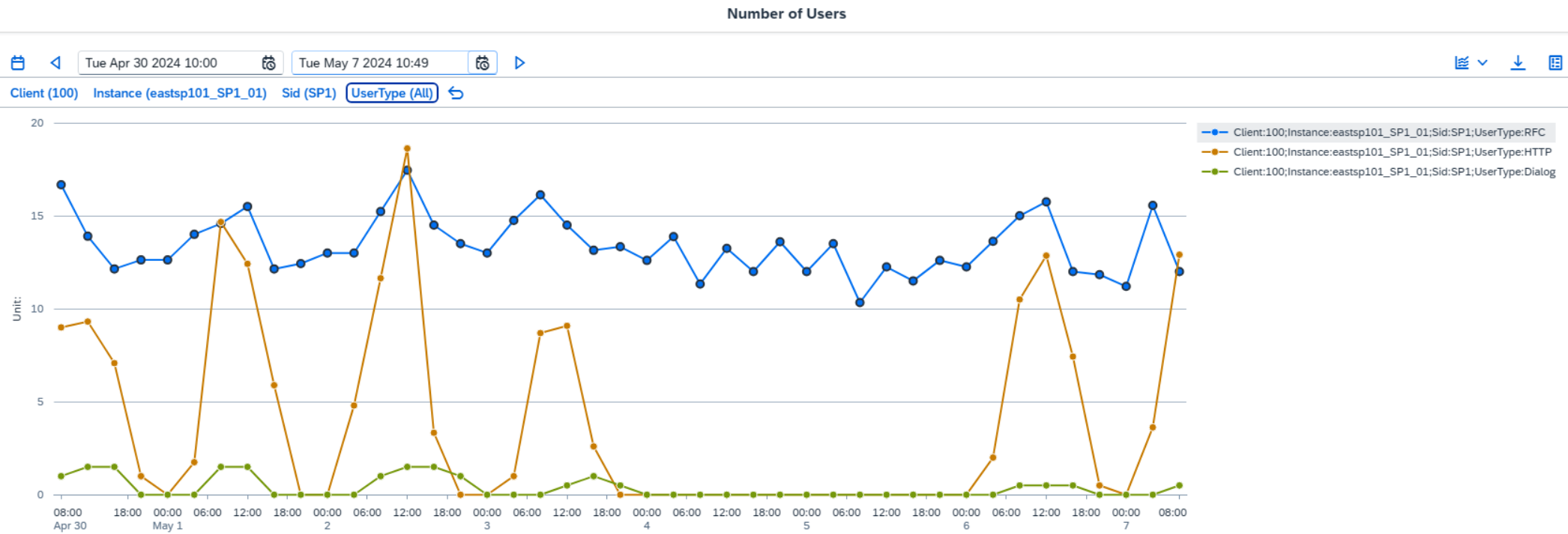
Service Name	SP1100
Service Type	SAP S/4HANA
Object Details	
Reported at	01-May-2024 19:38:03
Rating	Critical

#### Additional Information

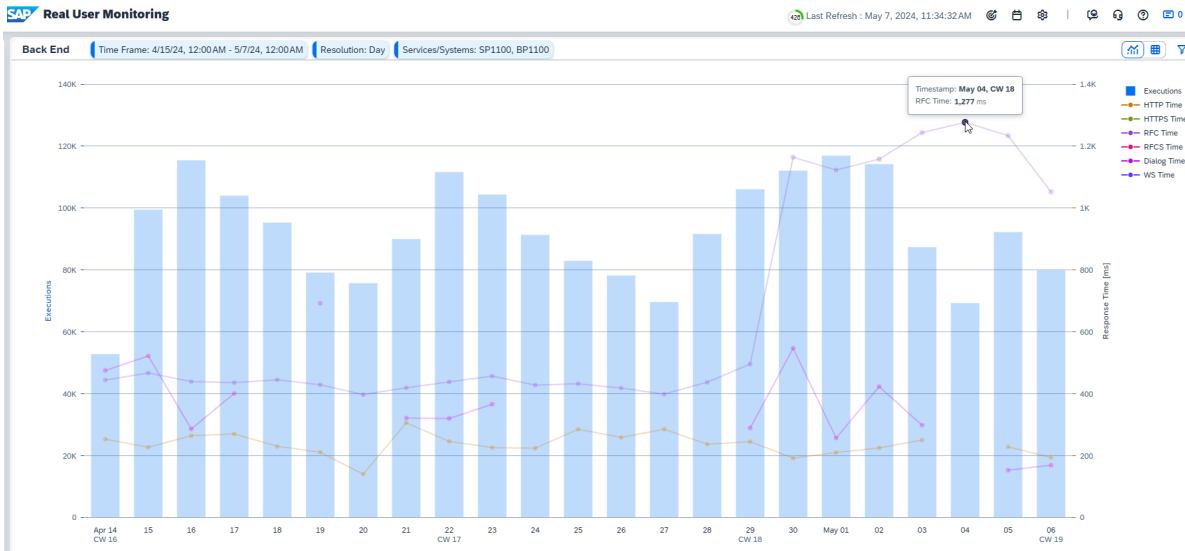
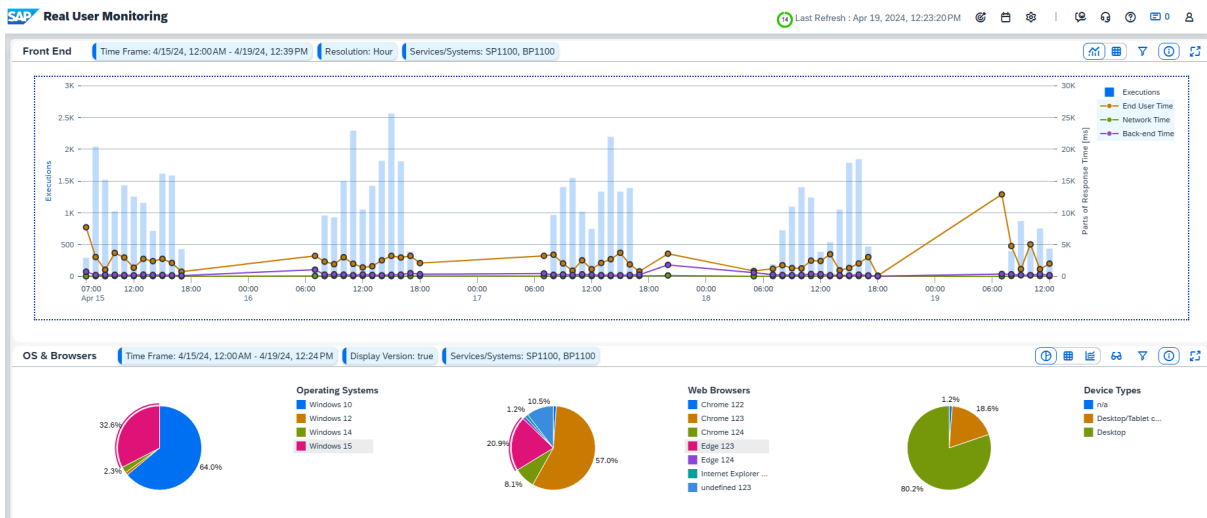
Name	Hardwarekey	Licensename	Sid	Timestamp	Rating	Value
ABAP License	R0168667373	Maintenance_HDB	SP1	01-May-2024 19:36:08	Critical	0.0 days



# Health Monitoring

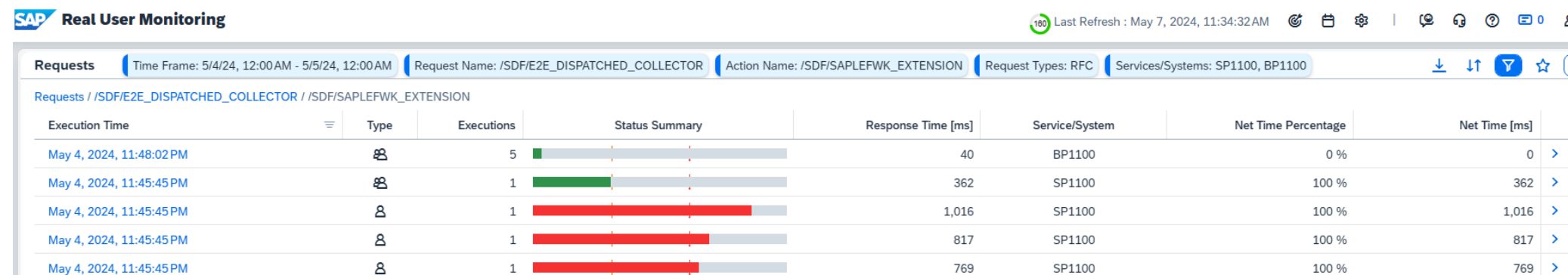
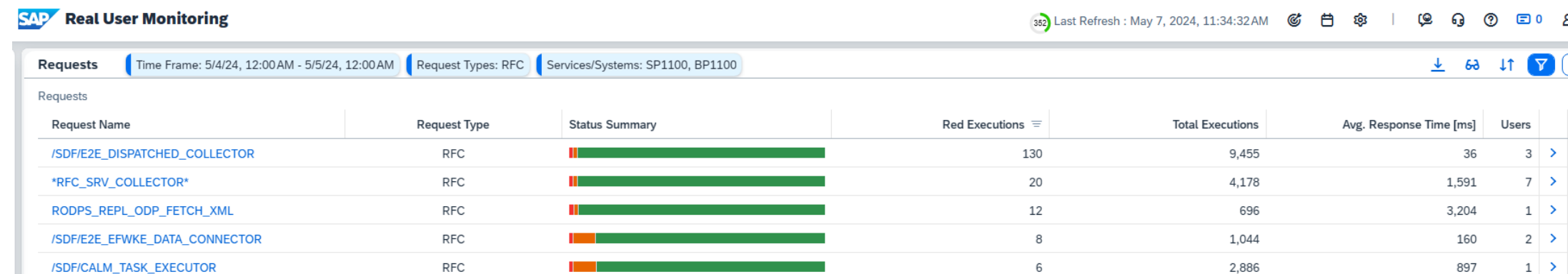


# Real User Monitoring





# Real User Monitoring



# Configuration & Security Analysis

## SAP Cloud ALM

SAP Configuration & Security Analysis

Changes					
Changes / Items of SP1					
Time Frame Selection ( 19/04/2021, 1:15:49 pm - 19/04/2024, 1:15:49 pm)			Search	↺	↻
Date	Landscape Object	Store Name	Description	Changes	
19/04/2024	System SP1	ABAP_NOTES	ABAP Notes	2	>
10/04/2024	System SP1	ABAP_TRANSPORTS	Transports	2	>
16/04/2024	System SP1	ABAP_TRANSPORTS	Transports	1	>
18/04/2024	System SP1	ABAP_TRANSPORTS	Transports	2	>

SAP Configuration & Security Analysis

Changes			
Changes / Items of SP1 / Details of ABAP_NOTES			
		Search	↺ ↻ ↕ ↴
Key	Value	Type of Event	Valid since
NOTE = 0003281776	VERSION = 0045 TEXT = Job & Automation Monitoring: ST-PI ... PRSTATUST = Completely implemented PRSTATUS = E	ADDED	Apr 19, 2024, 2:27:56 AM
NOTE = 0003374186	VERSION = 0032 TEXT = Collective corrections as of ST-PI 7.4... PRSTATUST = Completely implemented PRSTATUS = E	ADDED	Apr 19, 2024, 2:27:56 AM

SAP Configuration & Security Analysis

Changes			
Changes / Items of SP1 / Details of ABAP_TRANSPORTS / History			
		Search	↺
Key	Value	Type of Event	Valid since
TRKORR = SD1K903534 TARCLIENT = 100	RETCODE = 0004 OBJECTS = 1 AS4TEXT = 20240416:MRB:RE-36908 - update CDS ZC_ASSETHIST FY2024 TRFUNCTIONT = Workbench Request TRSTATUST = Released TRFUNCTION = R TRSTATUS = R PROJECT = EXPORT_TIMESTAMP = 20240416040952 SAP_TMWFLOW =	EVENT	Apr 16, 2024, 4:36:27 PM

## Eastland Change Record

Change Request

Asset load from SAP to Cognos

Change ID : 441 | Stage : Close | Status : Completed | Requested by : Fiona Evans  
Import this transport to update the CDS dataset's FY from 2023 to 2024

Number	Request	Clt	RC	Owner	Project	Short Text
1	SD1K903534	100	◆	BRANDR		20240416:MRB:RE-36908 - update CDS ZC_ASSETHIST FY2024

Submission

Change Details

Template	SAP - Transports into Production	Workflow	Normal Change (SAP)
Change Type	Normal	Site	Shed 3
Category	Systems	Subcategory	SAP ERP
Item	Assets	Impact	Medium
Urgency	Medium	Priority	Medium
Risk	High	Scheduled Start	16/04/2024 16:24
Scheduled End	17/04/2024 09:24	Created Time	16/04/2024 16:24
Completed Time	16/04/2024 16:51	Services Affected	Applications



# Configuration & Security Analysis

**SAP Configuration & Security Analysis**

Administration

Systems

Setup/Activate

Status	Service Status	Name	Description	Service Type	Total	Correct	Error	Information	Initial
ERROR	Normal operation	BP1	BP1 (BP1100)	SAP NetWeaver AS for ABAP	55	54	1	0	0
READY	Normal operation	SP1	SP1 (SP1100)	SAP S/4HANA	55	55	0	0	0

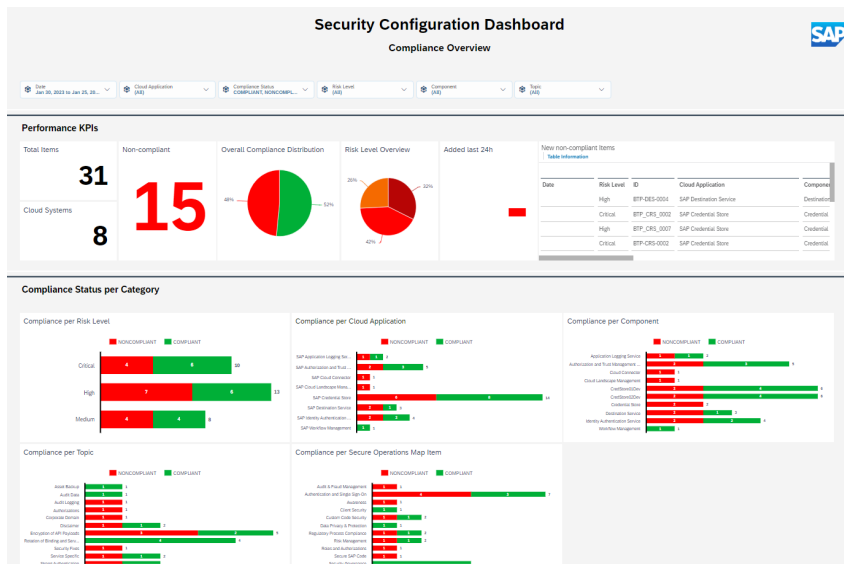
**SAP Configuration & Security Analysis**

Administration

Systems / Items of BP1 (TechnicalSystem) / Overall Rating: ERROR

Execute Delete Store Data

Status	Landscape	Application	Id	Description	Extractor	Processor
ERROR	System BP1	CCDB	S00004	Audit log	ERROR	CORRECT



**SAP Job & Automation Monitoring**

<b>SAP Job &amp; Automation Monitoring</b> <span>Last Refresh : May 1, 2024, 4:22:01 PM</span>							
<b>Monitoring</b> <span>Time Frame: 4/29/24, 4:22 PM - 5/1/24, 4:22 PM</span> <span>Services/Systems: SP1100</span>							
<a href="#">Services/Systems / Jobs or Automations (119/119)</a>		Rating is propagated from the list of job es:					
Name	Type	Execution Sta...	Application Status	Start Delay	Run Time	Service/System	Open AL...
FI_GL_GRIR_ACC_CLEAR_MONTHLY	SAP ABAP Job					SP1100	0
AUTO_PURCHASE_ORDER_CREATION	SAP ABAP Job					SP1100	1
FCLM_FLOWBUILDER_JOB	SAP ABAP Job					SP1100	0



# Job Monitoring

Configuration for Services/Systems

< SP1100 (SAP S/4HANA)

Monitoring

Events

Parameter	Operator	Value	
Job / Automation Name	Is	FI_AP_PO_INV_REL x	⊖
Job / Automation Name	Is	FI_REC_ENT_CREATE_INVOICES x	⊖
Job / Automation Name	Is	ZLO_ISO_FILE_DATALOAD_PROD x	⊖
Job / Automation Name	Is	PM ORDERS CLSD 90 DAYS x	⊖
Job / Automation Name	Is	AUTO_PURCHASE_ORDER_CREATION x	⊖

Event Actions

Create Alert

Send Email To

ON

ON

## SAP Cloud ALM Notification

Job & Automation Monitoring Event

Critical Execution Status for job detected (NAME =  
AUTO\_PURCHASE\_ORDER\_CREATION)  
SP1100

Service Name	SP1100
Service Type	SAP S/4HANA
Object Details	NAME = AUTO_PURCHASE_ORDER_CREATION   TYPE = SAP ABAP Job
Message	Latest Execution Status is Yellow
Reported at	2024-05-01T02:09:11 UTC
Rating	WARNING

# Key Takeaways

- Gained improved insights into system performance and identified potential issues.
- Drilling down into relevant details through the intuitive customer dashboards.
- Increased solution reliability by highlighting potential problems and key action dates, including certificate renewals
- SAP Cloud ALM can support, regardless of your SAP systems, e.g. ECC/S4HANA, Cloud, On-Prem, other SAP solutions.



# SAP Roadmap: what's next...

- S/4HANA is due for upgrade at the end of 2024.
- A decision is pending if an upgrade will be performed or to move to S/4HANA Cloud Edition (RISE)
- ELG will next add SAP PO to SAP Cloud ALM monitoring and Integration Monitoring.
- Current SAP S/4HANA version doesn't provide the functionality to add integration monitoring with SAP Concur. ELG will add this on SAP Cloud ALM after upgrading.
- Enable and configure Business Process Monitoring in SAP Cloud ALM.

# How to Connect



**E:** phil.wallingford@ovation.co.nz  
**M:** +64 21 931 217  
**Li:** [linkedin.com/in/philip-wallingford-36106411](https://www.linkedin.com/in/philip-wallingford-36106411)

*REALTECH*

**E:** Andrew.spicer@realtech.co.nz  
**M:** +64 21 500 545  
**Li:** <https://www.linkedin.com/in/andrew-spicer38/>

# MASTERINGSAP

An SAPinsider Company

**#MasteringSAP**  
**#MasteringSAPCollaborate**