



GenAI is Eating the World

Exploring AWS GenAI Technologies for SAP Solutions

David Nye

Solutions Architect, SAP
Amazon Web Services



Software is eating the world

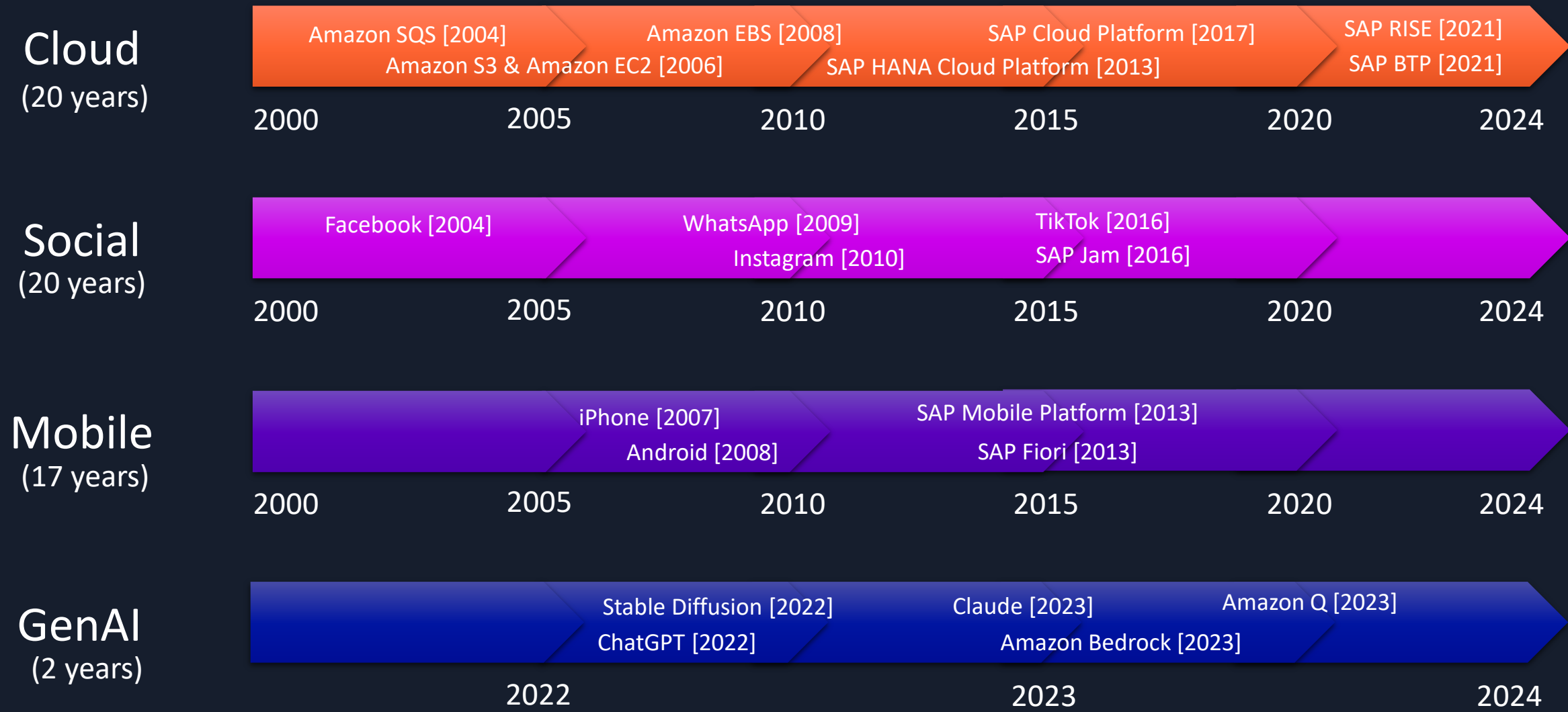
Marc Andreessen [2011]

a16z



By JD Lasica - <https://www.flickr.com/photos/jdlasica/10082059294/>,
CC BY 2.0, <https://commons.wikimedia.org/w/index.php?curid=145398495>

GenAI is Eating the World



Your Presenter

DAVID NYE

SOLUTIONS ARCHITECT
AMAZON WEB SERVICES

TECHNOLOGY | SECURITY | INTEGRATION

~20 YEARS WORKING WITH SAP TECHNOLOGIES
COMPUTER SCIENCE MAJOR
MOUNTAIN BIKER

NYDAVID@AMAZON.COM

[HTTPS://WWW.LINKEDIN.COM/IN/NYEDAVID/](https://www.linkedin.com/in/nyedavid/)



Exploring AWS GenAI Technologies for SAP Solutions

01 What is GenAI

02 AWS GenAI
Services

03 SAP & GenAI

04 Getting Started

What is GenAI?

What is Generative AI?



AI that can
generate content
close enough to human created content
for real-world tasks



Powered by
foundation models
pre-trained on large sets of data with several
hundred billion parameters



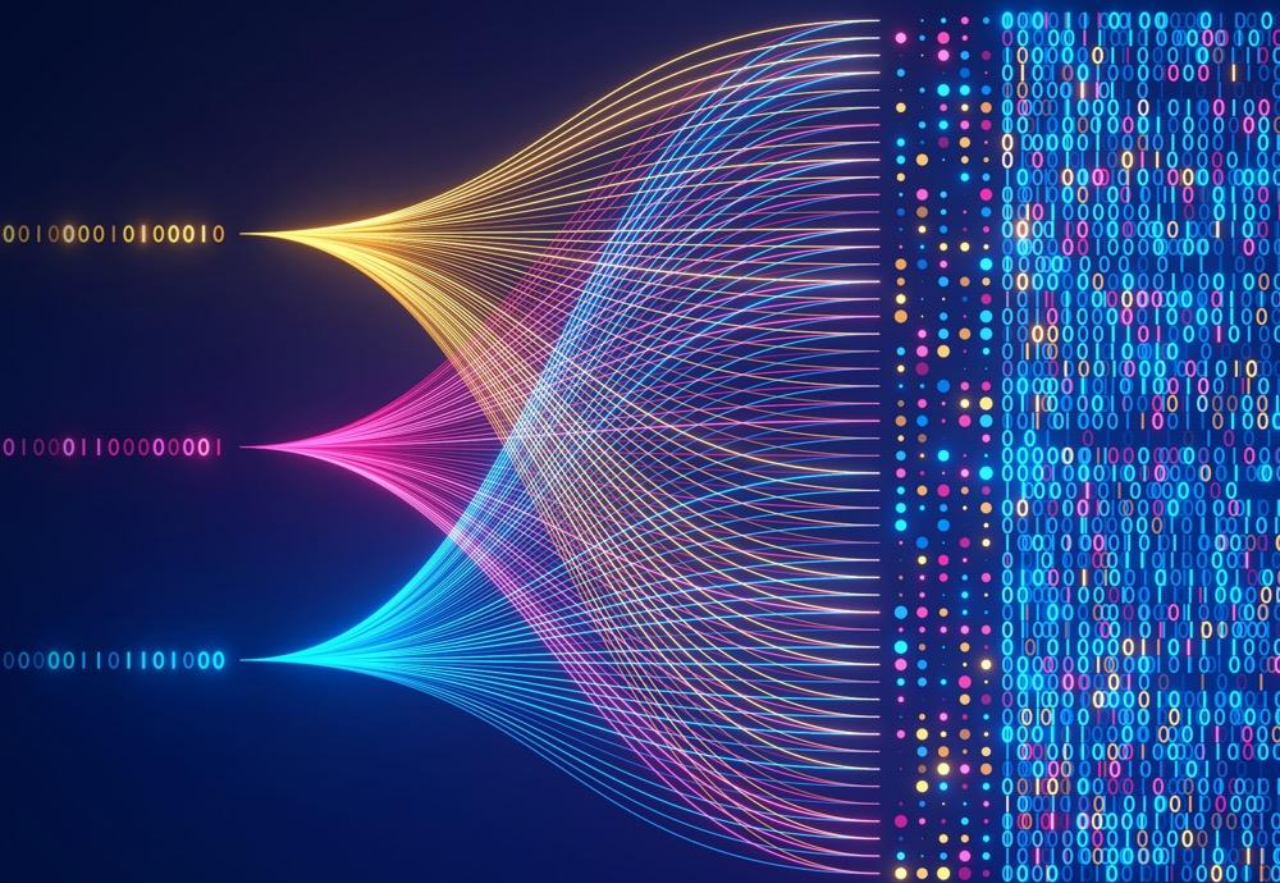
Applicable to
many use cases
like text summarization, question answering,
digital art creation,
code generation, etc.



Tasks can be
**customized for
specific domains**
with minimal fine-tuning



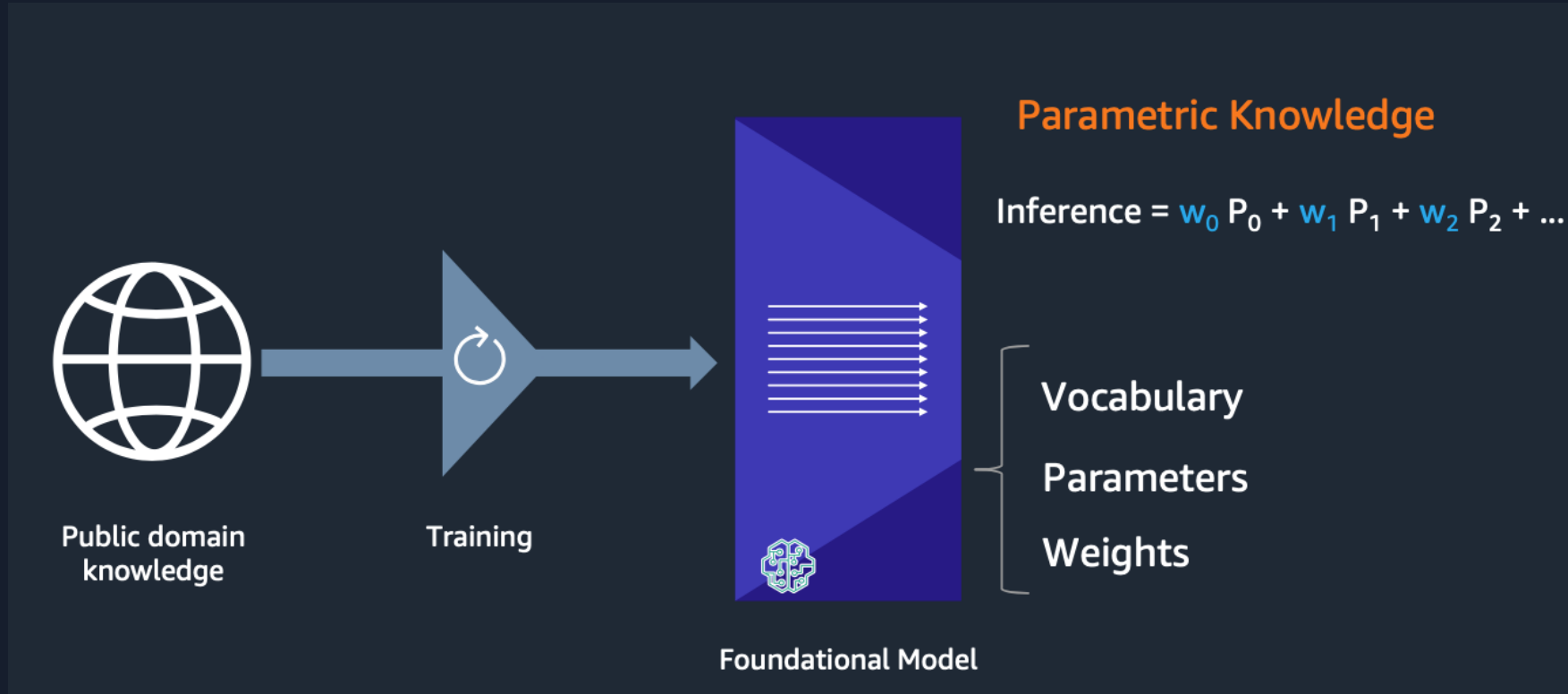
New Volvo car concept design by midjourney
Credit: @sugardesign_1 Instagram



Generative AI could add the equivalent of **\$2.6 trillion to \$4.4 trillion in annual economic benefits** to the global Economy

“The economic potential of generative AI: The next productivity frontier,”
McKinsey, June 14, 2023

Generative AI is powered by Foundation Models



- Pretrained on vast amounts of unstructured data
- Contain large number of parameters that make them capable of learning complex concepts
- Can be applied in a wide range of contexts (based on Neural Networks)
- Customize FMs using your data for domain specific tasks

Types of foundation models

Input



FM



Output

“Summarize the articles on impact of walking on heart health”

Text-to-text

Generate text from natural language prompts

“Ten thousand steps per day is optimum for maintaining a healthy heart”

“What is the top-5 selling products by total sales last month ?”

Text-to-SQL

Generate SQL Query of text

“select product, sum(amount) from sales group by product order by sum(amount) desc limit 5

“a photo of an astronaut riding a horse on mars”

Multimodal

Create and edit images using natural language prompts



Challenges with Foundation Models

1

Hallucinations

Model response with Incorrect Information confidently

2

Knowledge Cut off

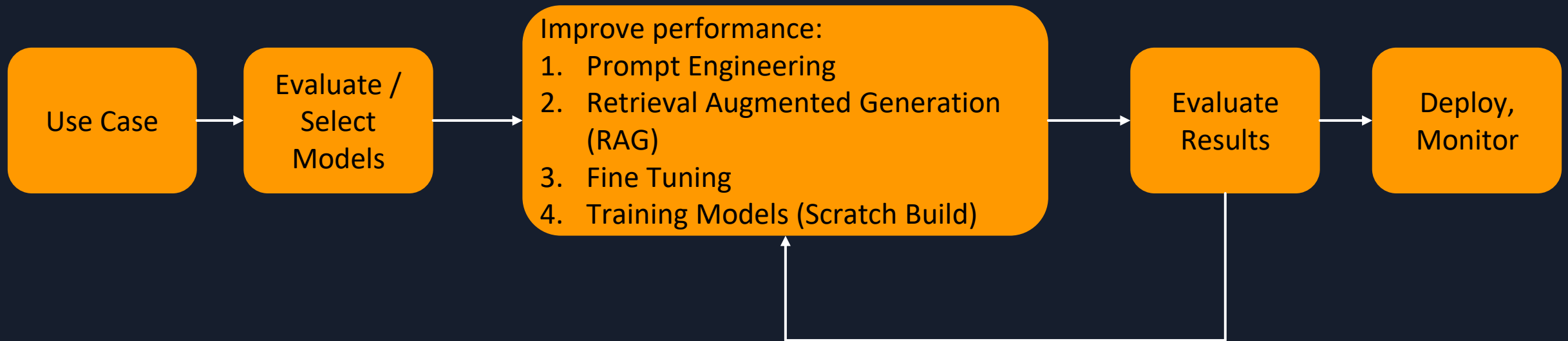
Training data is dated, knowledge in model is not up-to-date

3

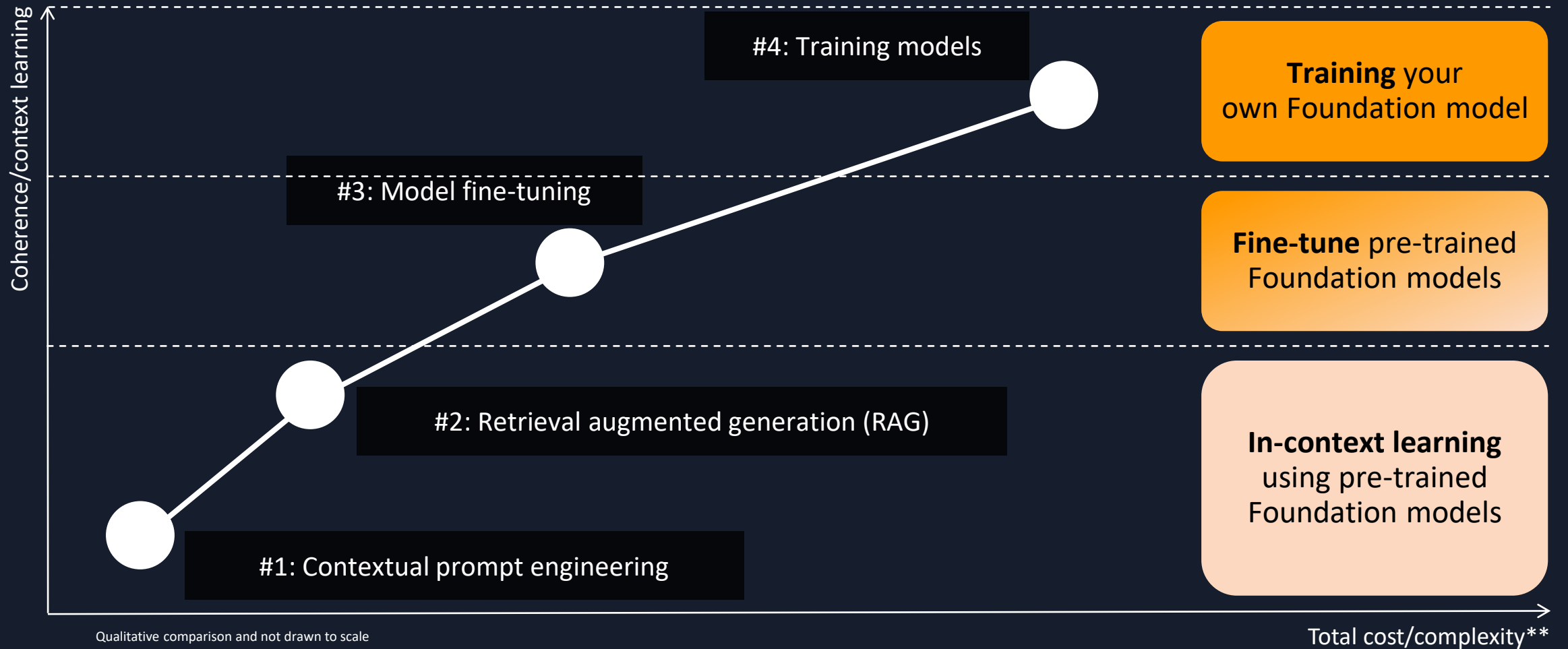
Imprecise response

Foundation Models are built on public knowledge and may not align response with enterprise context. Model needs to be Grounded

Generative AI Application Lifecycle

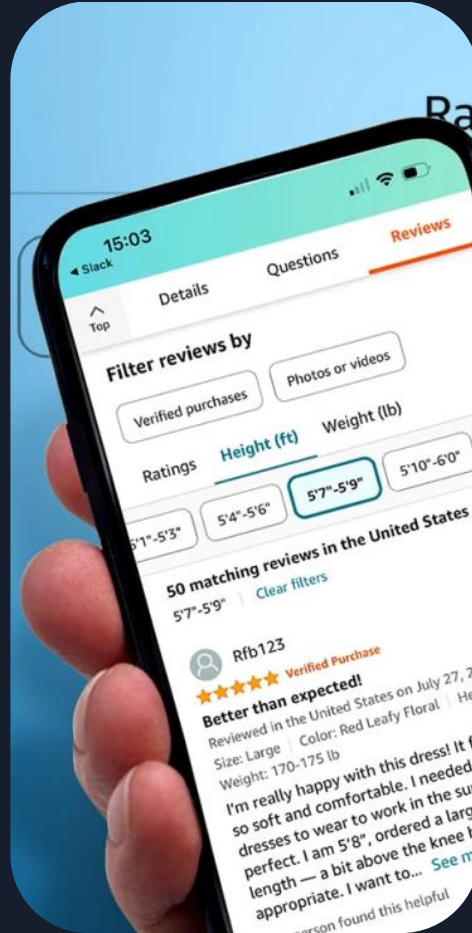


Generative AI model implementation patterns

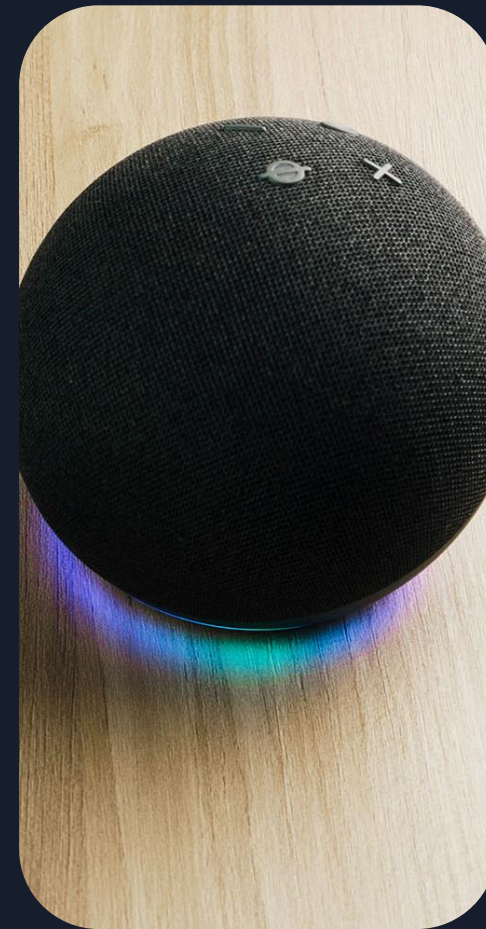


** Total cost/complexity of model preparation, inference, Data management

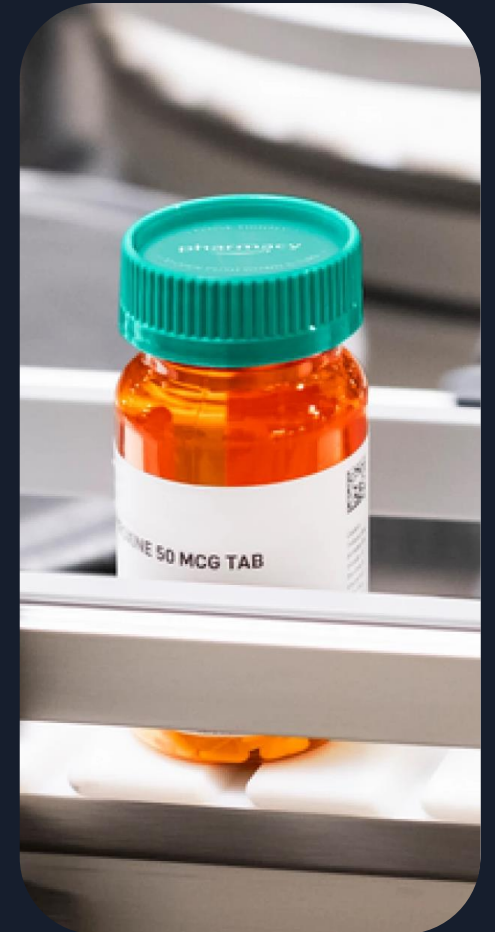
Generative AI Innovations at Amazon



Customer reviews
on Amazon.com



Alexa
Billions of interactions
each week

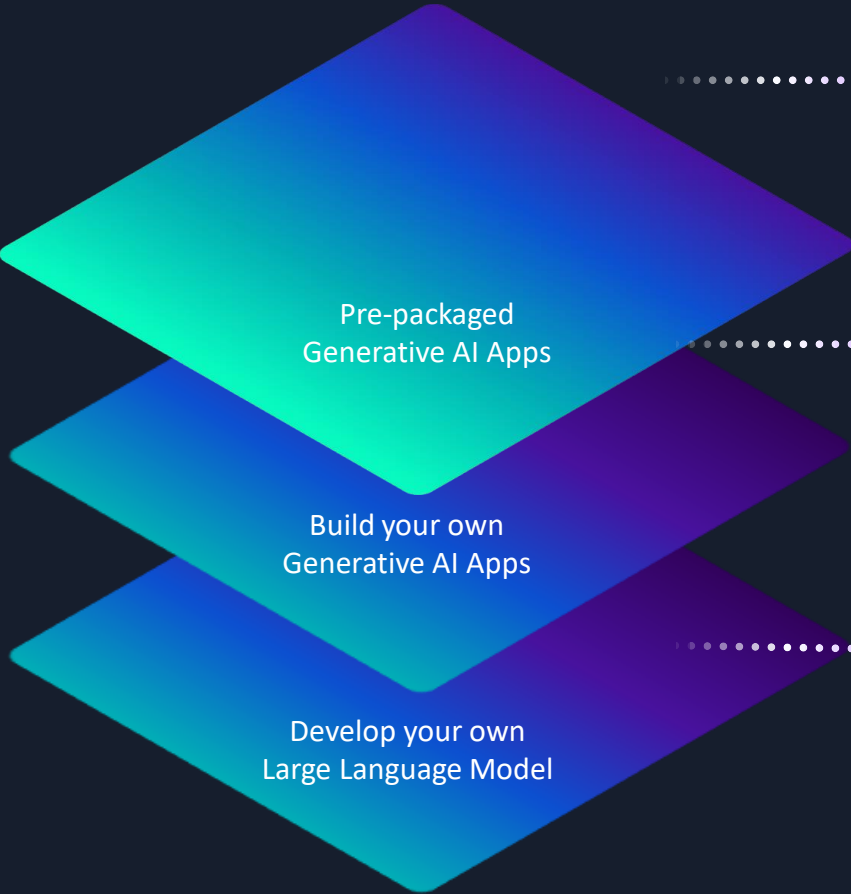


**Amazon
Pharmacy**
faster prescriptions and
more helpful support

AWS GenAI Services



Generative AI Stack



APPLICATIONS THAT LEVERAGE FMs

- Amazon Q
- Amazon Q in Amazon QuickSight
- Amazon Q in Amazon Connect
- Amazon CodeWhisperer

TOOLS TO BUILD WITH FMS AND LLMS

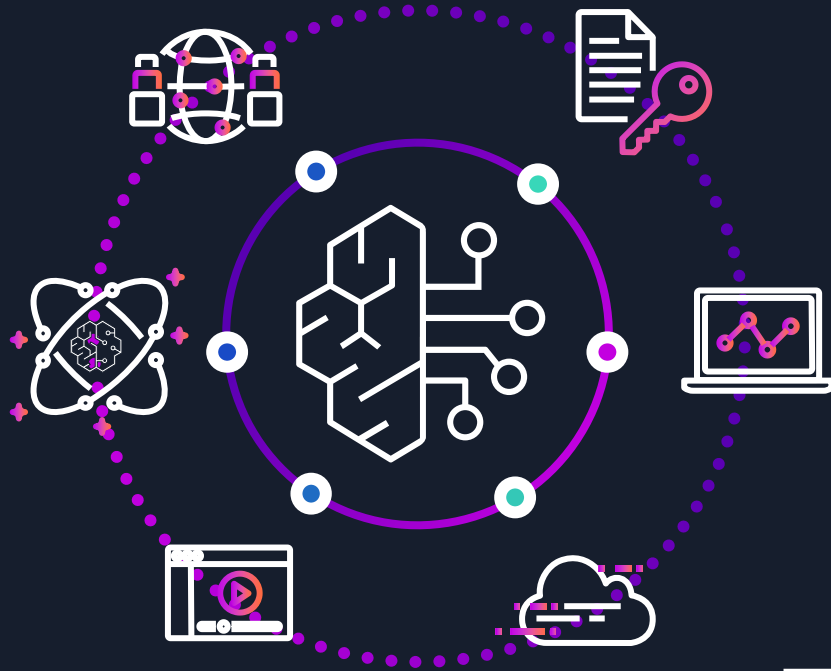
- Amazon Bedrock
 - Guardrails
 - Agents
 - Customization capabilities

INFRASTRUCTURE FOR FM TRAINING & INFERENCE

- GPUs
- Trainium
- Inferentia
- SageMaker
- UltraClusters
- EFA
- EC2 Capacity Blocks
- Nitro
- Neuron

Amazon Bedrock

THE EASIEST WAY TO BUILD AND SCALE GEN AI APPLICATIONS



- 21+ best in class FMs from 7 providers
- Privately customize models with your data
- Native support for Retrieval Augmented Generation (RAG)
- Agents that execute multistep tasks
- Model Evaluation
- Guardrails (preview)
- Security, privacy, and safety



Amazon Bedrock

BROAD CHOICE OF MODELS



AI21 labs

ANTHROPIC

 **cohere**

 **Meta**

stability.ai



Jurassic

Claude

Command + Embed

Llama 3

Stable Diffusion

Amazon Titan

Contextual answers,
summarization,
paraphrasing

Summarization, complex
reasoning, writing, coding

Text generation,
search, classification

Q&A and reading
comprehension

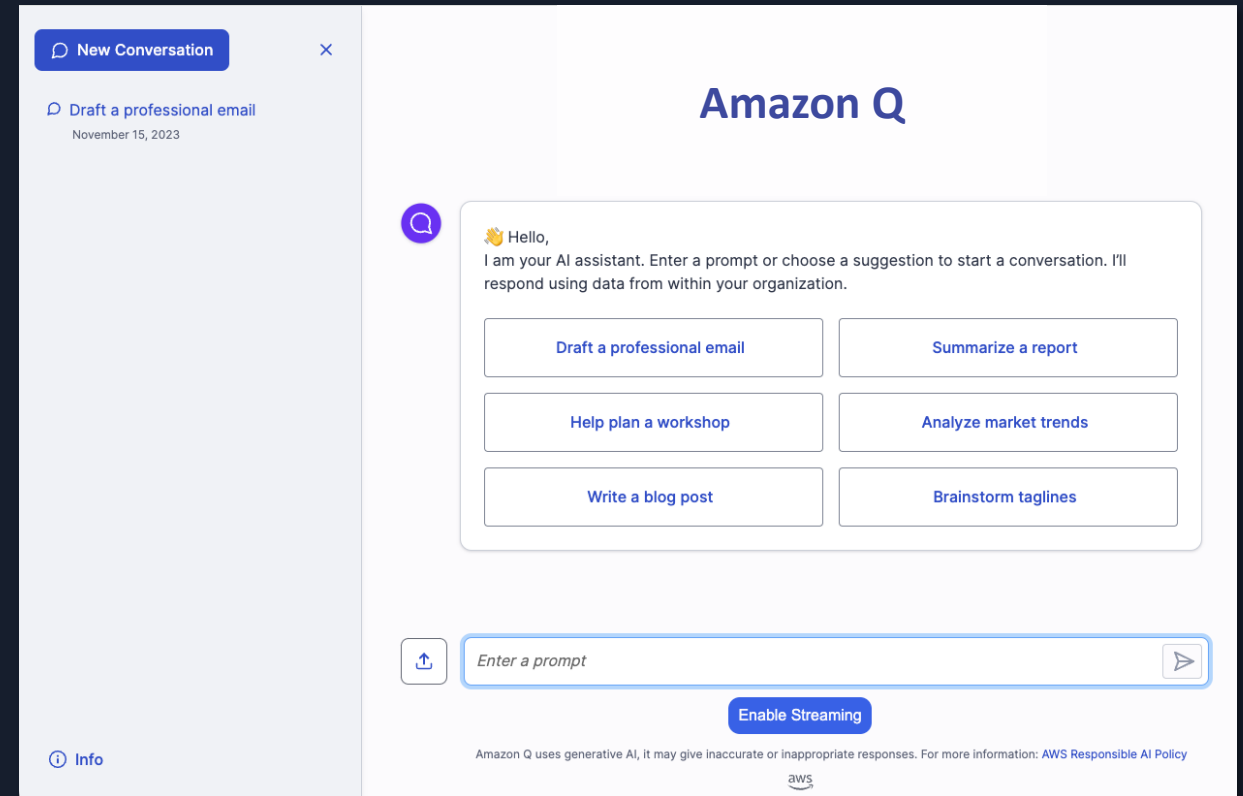
High-quality images
and art

Text summarization,
generation, Q&A,
search

Amazon Q is your business expert

BOOST YOUR WORKFORCE PRODUCTIVITY WITH GENERATIVE AI

- > Delivers quick, accurate, and relevant answers to your business questions, securely and privately and document repositories.
- > Provides responses with references and citations for easy fact-checking
- > Respects existing access control based on user permissions
- > Connects to over 40 popular enterprise applications and document repositories
- > Enables administrators to easily apply guardrails to customize and control responses



Key Features

BOOSTING EMPLOYEE PRODUCTIVITY



Trusted answers generated from enterprise data



Citations and source attribution



Conversation history and context



Upload files and analyze content



Execute Actions across multiple Enterprise Apps

New Conversation X

Q Summarize the key insights from Antje's recent AWS Weekly Roundu...
November 26, 2023

Summarize the key insights from Antje's recent AWS Weekly Roundup posts and craft a compelling social media post that not only highlights the most important points but also encourages engagement. Consider our target audience and aim for a tone that aligns with our brand identity. The social media post should be concise, informative, and enticing to encourage readers to click through and read the full articles. Please ensure the content is shareable and includes relevant hashtags for maximum visibility.

Here is a draft social media post highlighting insights from Antje's AWS Weekly Roundup: Did you miss all the latest #AWS announcements and news last week? Catch up on key launches from Amazon MWAA, EMR Studio and more in @AntjeBarth's Weekly Roundup blog post. 📰 New Apache Airflow version now supported on Amazon MWAA. ✨ Check out highlights on building with #GenerativeAI from re:Invent. 🧑‍💻 Dive into best practices for ML model hosting on Amazon SageMaker. Get all the details and don't forget to follow top #AWS blogs for the latest. Head to the link in our bio now to get up to speed! #MachineLearning #Data #CloudComputing

Sources ^

1 AWS Weekly Roundup – Amazon MWAA, EMR Studio, Generative AI, and More – August 14, 2023 _ AWS News Blog.pdf
https://... August%2014%2C%202023%20_%20AWS%20News%20Blog.pdf

Enter a prompt

Amazon Q uses generative AI and it may give inaccurate or inappropriate responses. For more information: [AWS Responsible AI Policy](#)

Top use cases

Streamline search experience



Connect internal wikis, SharePoint sites, Confluence, Salesforce, and 40+ other applications for a unified, conversational search experience.

Accelerate content creation



Empower employees to create content faster and smarter across departments—from marketing to sales to engineering.

Generate summaries



Quickly understand the essence of documents by creating summaries of uploaded files or existing enterprise documents.

Extract key insights

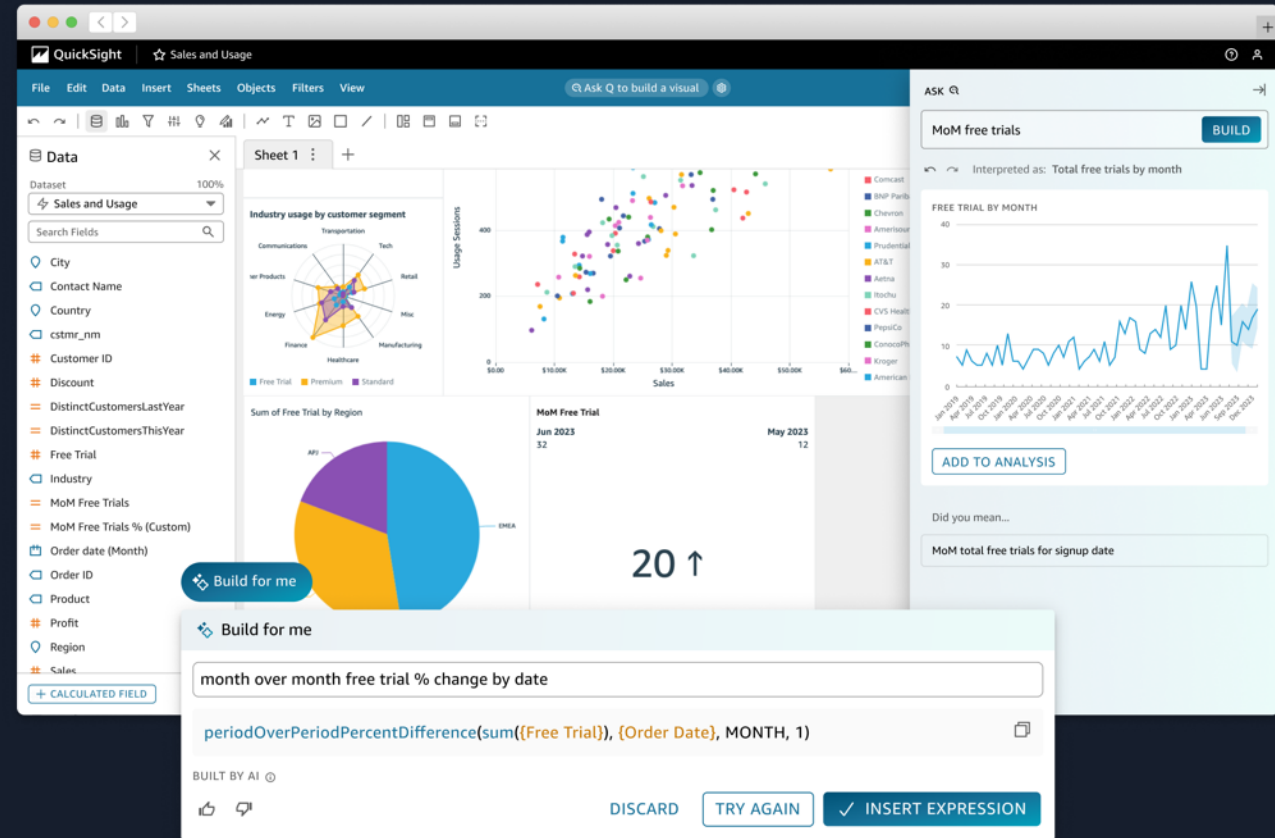


Perform comparative analysis on your documents and unlock powerful insights so that your employees can make faster, better data-driven decisions.

Amazon Q in QuickSight

YOUR GENERATIVE BI ASSISTANT THAT MAKES IT EASY TO BUILD AND CONSUME INSIGHTS

- > Enables business analysts/users' to quickly build and refine compelling visuals, summarize insights, and answer data questions.
- > Accelerate analysis by easily creating calculations without looking up or learning specific syntax
- > Interpret and share insights with visually compelling narratives with simple UI-based workflows

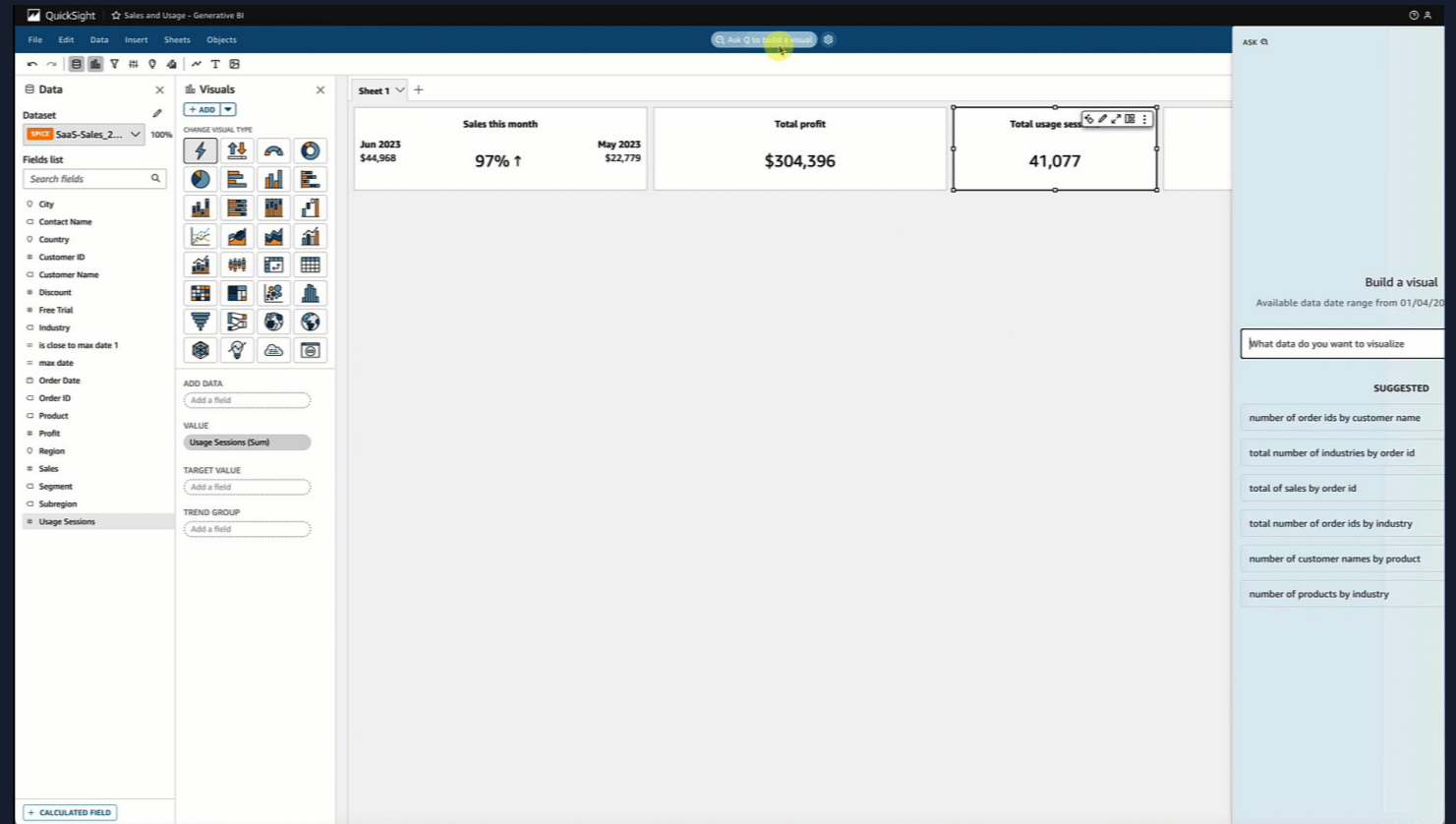


Author visuals using natural language in seconds

A NEW DASHBOARD BUILDING EXPERIENCE POWERED BY GENERATIVE BI

Natural language visual creation

Use vague or precise language to generate and add visuals to a dashboard



Generative BI capabilities in Amazon QuickSight

ACCELERATE THE PATH TO DATA-DRIVEN ACTION FOR ALL USERS

Accelerate authoring with natural language

- Generate visuals in seconds using precise or vague language
- Fine-tune visuals with generative editor
- Create new calculations without syntax lookups

Generate visually compelling stories

- Contextualize insights to drive actions
- Automatically generate data stories with natural language prompts
- Create refined narratives using AI, themes, or manual edits
- Securely share narratives that stay up-to-date

Enterprise-ready: Governed & secure

- Govern with QuickSight security rules and policies
- All data stays within customer's AWS account
- No customer data is used to train the LLMs that underlie the Generative BI capabilities
- All calculations occur in QuickSight analytical engine, driving accuracy

Powered by Amazon Bedrock and built on QuickSight ML foundation




SAP & GenAI

SAP Concur enhanced with Amazon Bedrock




52%
fewer errors
in reporting expenses

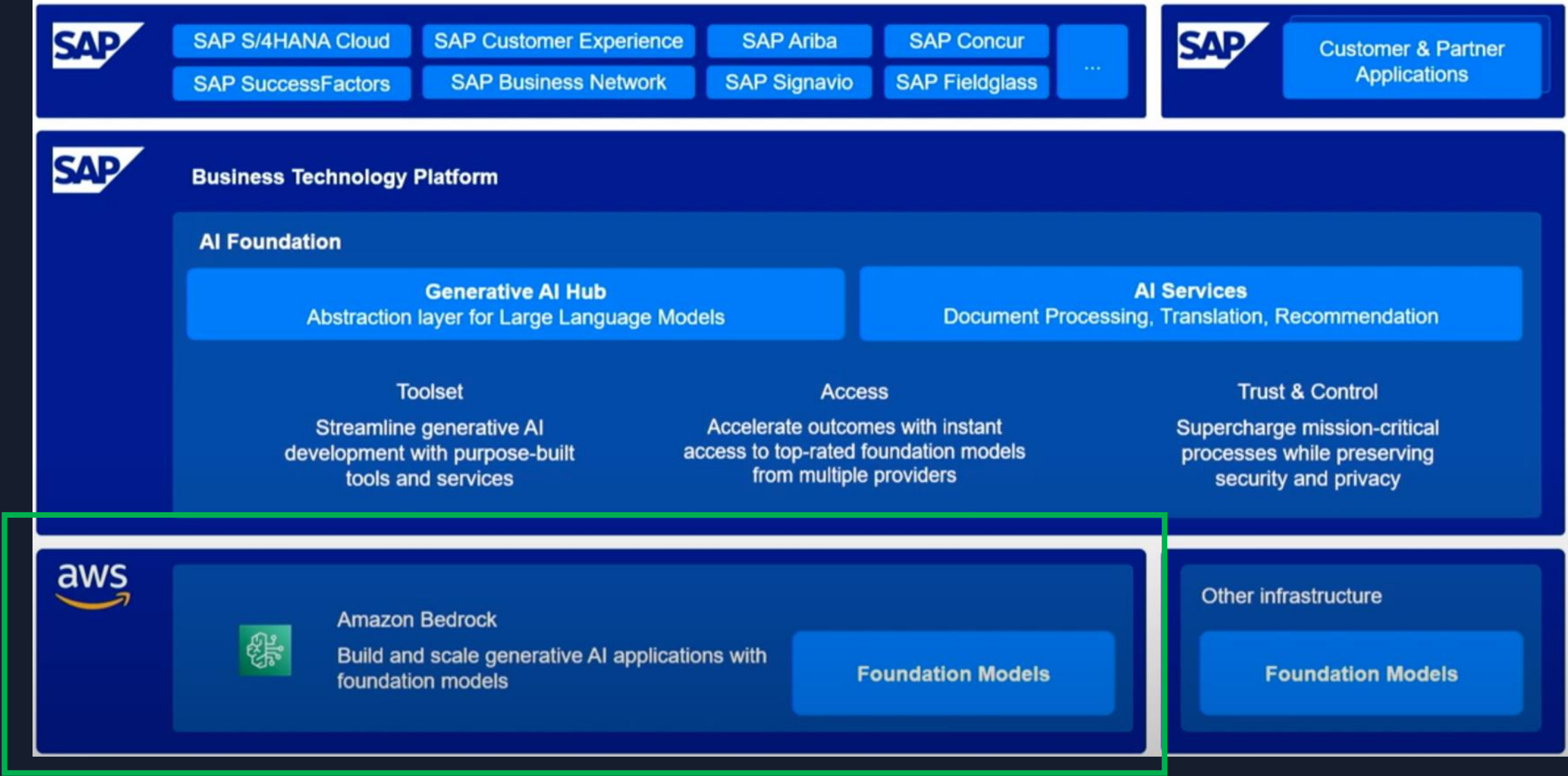
Maximize efficiency, reduce risks and maintain compliance in employee spending

 **Streamline** processes and make better travel decisions in less time

 **Improve** employee experiences while protecting your bottom line

 **Automate** manual activities according to your corporate policies and unique business needs

SAP AI with Amazon Bedrock Reference Architecture



Accelerate SAP automation and innovation with generative AI from AWS



Sales Inventory Analyst

Gather real-time insights in natural language prompts with **Amazon Bedrock and SAP Datasphere**



Business User (Cross-Industry)

Improve user productivity with Conversational AI using **Amazon Q Business**



SAP Developer: Integrate & Extend Core

Accelerate development using SAP BTP and AWS services with **Amazon Bedrock and Amazon Q Developer**



SAP System Administrator

Complete development tasks faster using **Amazon Q Developer**



Order-to-Cash Analyst

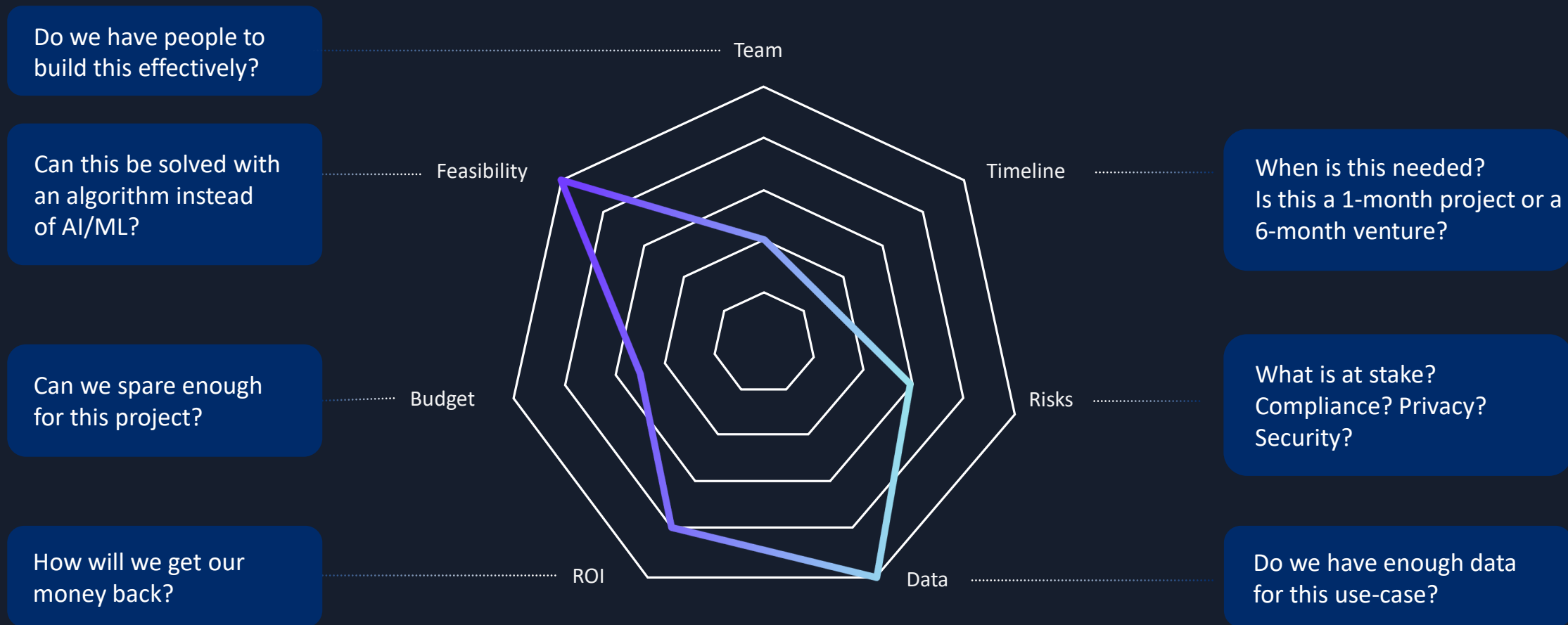
Improve decision making and analyze SAP data using generative BI capabilities with **Amazon Q in QuickSight**



Sales Account Manager

Gain customer insights by summarizing and analyzing documents with **Amazon Bedrock SAP Fiori and SAP BTP**

Assessing the fit of generative AI use cases



GenAI Use cases – UX strategy

Build Sidecar application

SAP Fiori /
SAP Build
Work Zone

AWS Amplify

Connect to Amazon Bedrock
via APIs

Embed Amazon Q for Business
Into Fiori LaunchPad

Customise SAP ERP

AWS SDK for SAP
ABAP

Connect to Amazon Bedrock
with 5 lines of code

Extend with Business Applications

Amazon QuickSight

Amazon
Connect

Amazon
Supply Chain

Amazon Q embedded into
business applications

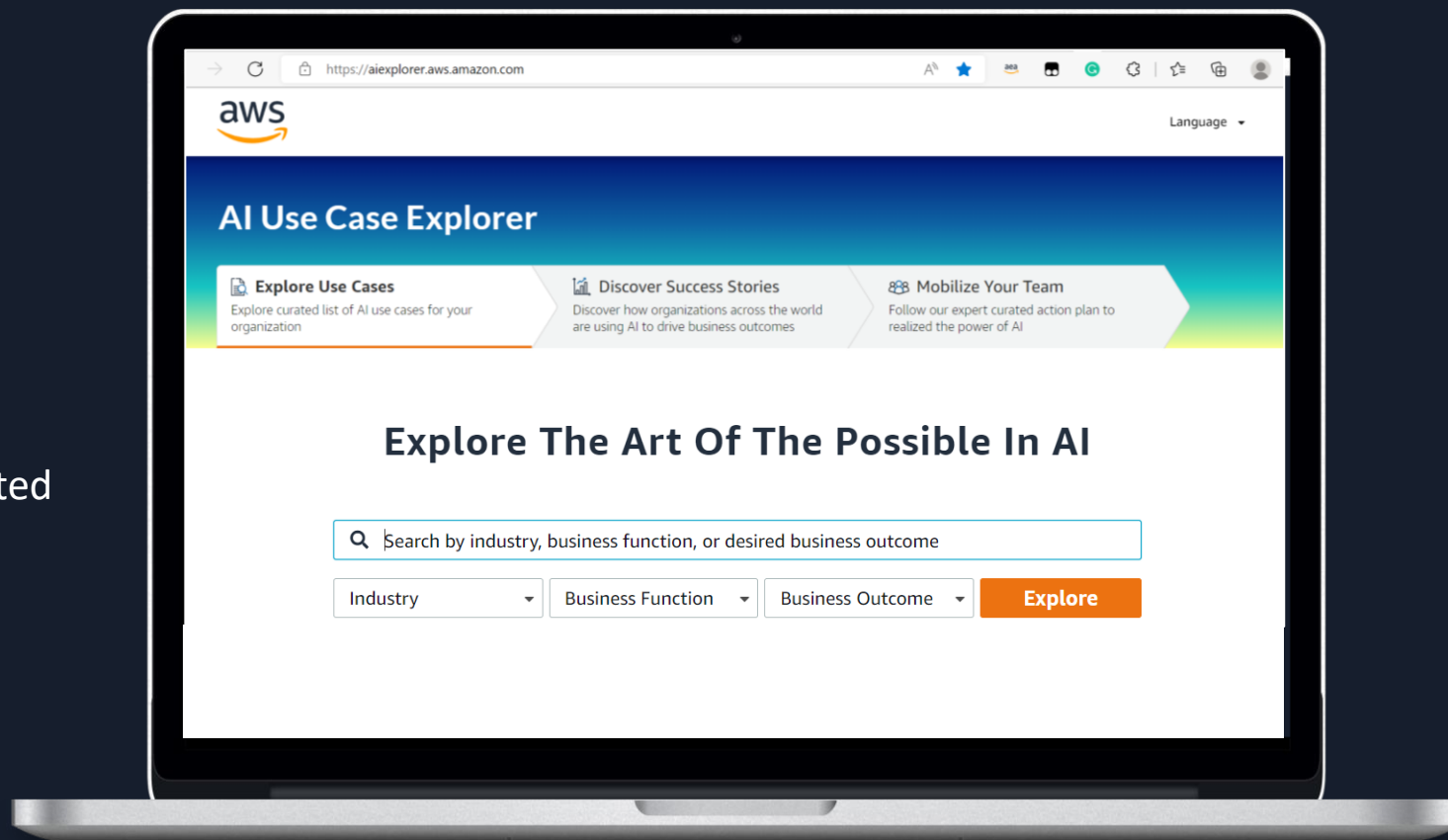
Getting Started





AI Use Case Explorer

Easily find the most relevant AI use cases with related content and guidance to make them real



aiexplorer.aws.amazon.com



Experiment

Experiment with a Proof-of-Concept!

Engage us for SAP on AWS innovation topics & workshops



Thank you!

David Nye

nydavid@amazon.com

<https://www.linkedin.com/in/nyedavid/>