

# Improving Safety and Audit Trails with Fortescue Vehicle Prestart

Jeff Albert

Maintenance Systems Lead,  
Fortescue Metals Group





# Fortescue Vehicle Prestart

We are Fortescue

NOVEMBER 2022



# Forward Looking Statements Disclaimer



## Important Notice

The purpose of this presentation is to provide general information about Fortescue Metals Group Ltd ("Fortescue"), including general information in relation to Fortescue's wholly owned subsidiary Fortescue Future Industries Pty Ltd and its subsidiaries (collectively "FFI"). It is not recommended that any person makes any investment decision in relation to Fortescue or FFI based on this presentation. This presentation contains certain statements which may constitute "forward-looking statements". Such statements are only predictions and are subject to inherent risks and uncertainties which could cause actual values, results, performance or achievements to differ materially from those expressed, implied or projected in any forward-looking statements. No representation or warranty, express or implied, is made by Fortescue or FFI that the material contained in this presentation will be achieved or prove to be correct. Except for statutory liability which cannot be excluded, each of Fortescue and FFI, their respective officers, employees and advisers expressly disclaims any responsibility for the accuracy or completeness of the material contained in this presentation and excludes all liability whatsoever (including in negligence) for any loss or damage which may be suffered by any person as a consequence of any information in this presentation or any error or omission therefrom. Each of Fortescue and FFI accepts no responsibility to update any person regarding any inaccuracy, omission or change in information in this presentation or any other information made available to a person nor any obligation to furnish the person with any further information.

## Additional Information

This presentation should be read in conjunction with the Annual Report at 30 June 2022 together with any announcements made by Fortescue and/or FFI in accordance with Fortescue's continuous disclosure obligations applying to it as a company listed on the Australian Securities Exchange. Any references to reserve and resources estimations should be read in conjunction with Fortescue's Ore Reserves and Mineral Resources statements released to the Australian Securities Exchange on 26 August 2022. Fortescue confirms in the subsequent public report that it is not aware of any new information or data that materially affects the information included in the relevant market announcement and, in the case of estimates of mineral resources or ore reserves, that all material assumptions and technical parameters underpinning the estimates in the relevant market announcement continue to apply and have not materially changed. All amounts within this presentation are stated in United States Dollars consistent with the functional currency of Fortescue and FFI, unless otherwise stated. Tables contained within this presentation may contain immaterial rounding differences.

# Integrated mine to market infrastructure





# Vehicle Prestart journey



---

The business requirement

---

Understand the process

---

Design the application

---

Running in Fiori

# Stakeholder



- Meetings
- Existing process
- Future process
- Start designing



# Understand the process



# Paper process



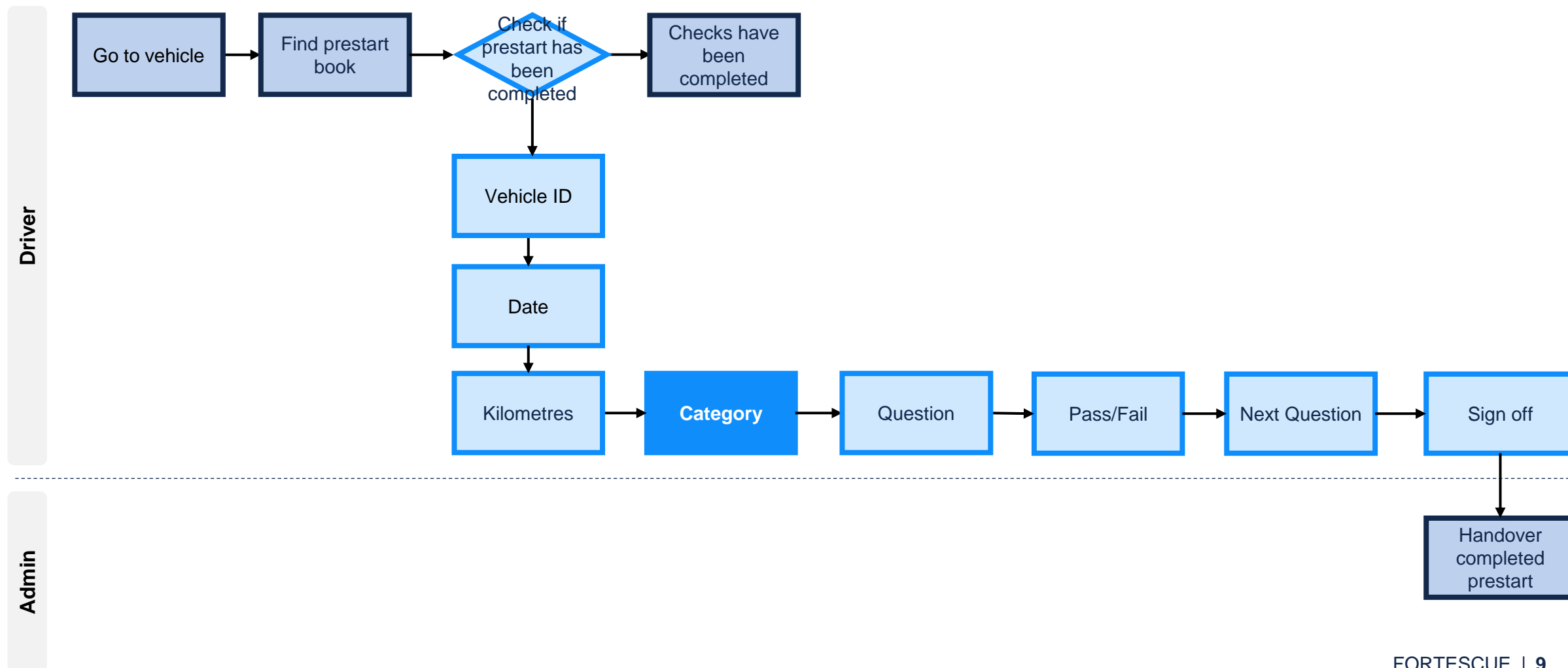
## LIGHT VEHICLE PRE-START CHECKLIST

WEEK STARTING: 12/8/19		Saturday		Sunday		Monday		Tuesday		Wednesday		Thursday		Friday	
Category	Inspection item	Pass	Fail	Pass	Fail	Pass	Fail	Pass	Fail	Pass	Fail	Pass	Fail	Pass	Fail
Category A faults to be rectified before vehicle is operated. Supervisor to be notified immediately.															
A	Steering system operational									✓		✓			
A	Seatbelt operational & serviceable									✓		✓			
A	Service & park brake operational									✓		✓			
A	Two way radio operational									✓		✓			
A	Lights (headlights, taillights, indicators) operational									✓		✓			
A	Tyre condition & spare									✓		✓			
Category B faults to be rectified before vehicle is operated unless approved by supervisor to operate.															
B	Air conditioning operational									✓		✓			
B	Reverse beeper & horn operational									✓		✓			
B	Flag serviceable									✓		✓			
B	Windscreen condition, any cracks									✓		✓			
B	Wipers/washers operational									✓		✓			
B	Wheel nuts/studs/wheel nut indicators in place									✓		✓			
Category C faults vehicle may be operated. Corrective action required. Report to supervisor to operate.															
C	Fuel, oil & coolant levels									✓		✓			
C	Gauges									✓		✓			
C	Doors & mirrors functional									✓		✓			
C	Cab clean									✓		✓			
C	Beacon operational									✓		✓			
Employee conducting pre-start initials										JK		JK			

Unit No. PH0660 Start of Week km's 3380 End of Week km's 3458



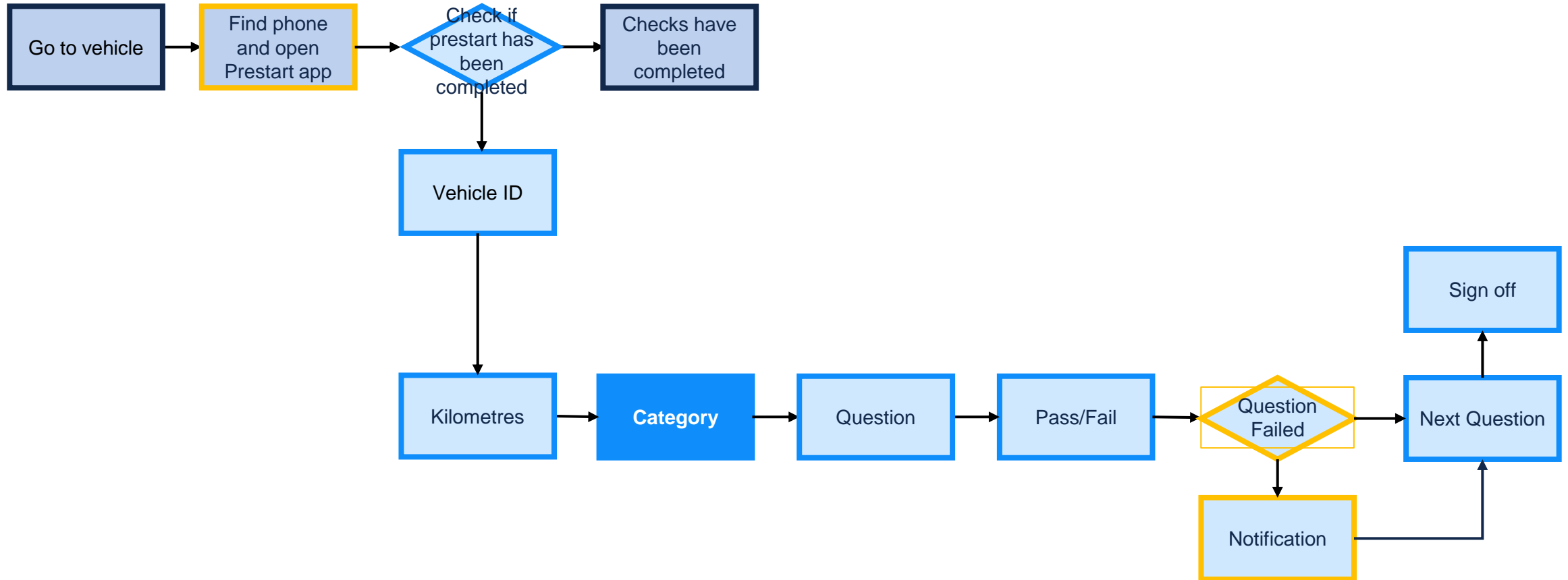
# Document the Existing Process





# Document the Future Process

Driver





# Design the application

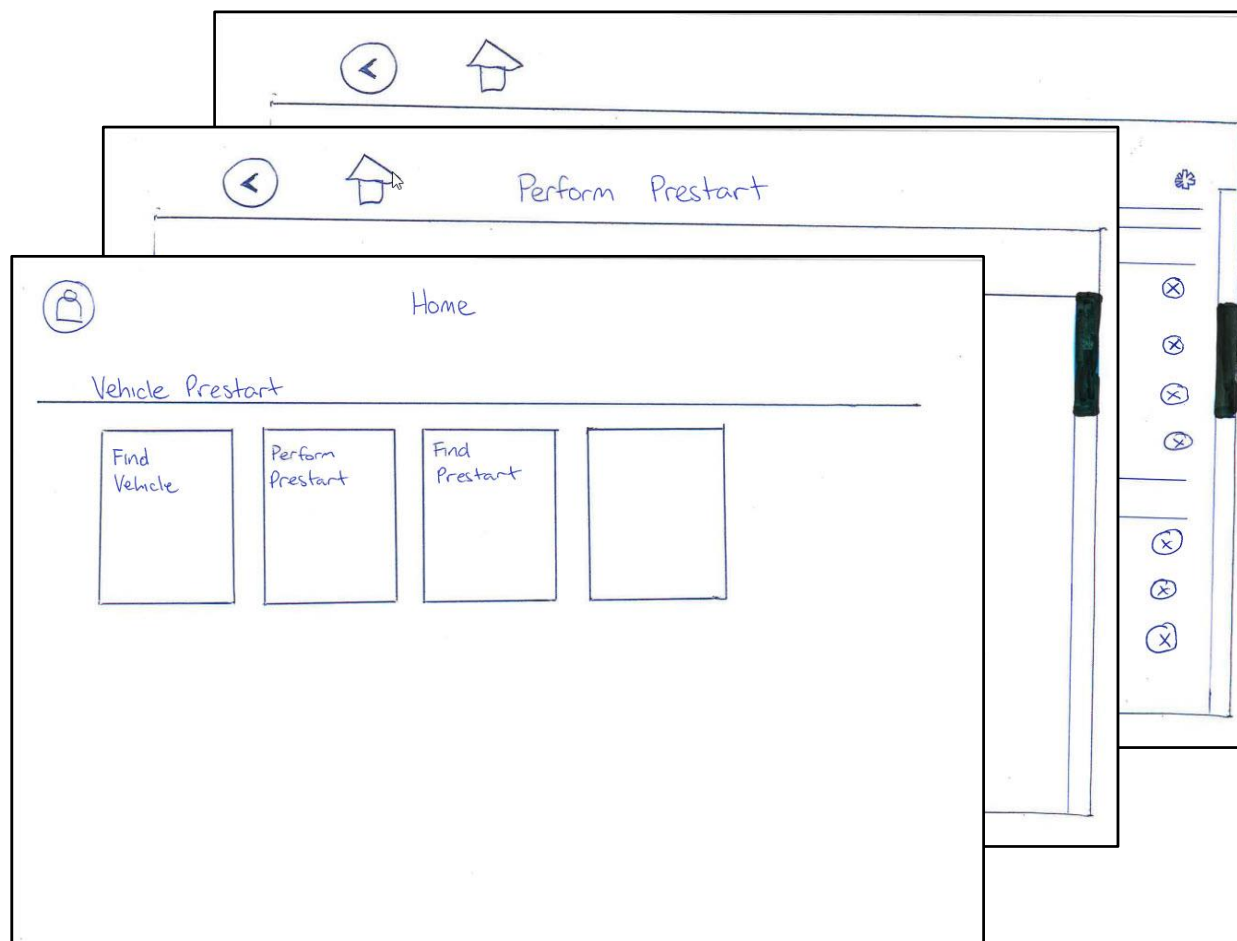


# What is build.me?



- Prototyping apps
- Elements
- Data from excel
- Paper, draw and scan
- Link pages
- Test

# Design Thinking



- A4 paper
- Draw template and photocopy
- Look at other Fiori Apps
- Start drawing
- Scan



# Build.me

The screenshot displays the Build.me web interface for a workspace named "Fortescue Vehicle Prestart". The interface includes a top navigation bar with the Build.me logo, the workspace name, and a "PROTOTYPE" dropdown menu. A search icon and a user profile icon labeled "JA" are also present. Below the navigation bar, a toolbar shows a "+" icon, the title "Vehicle Prestart", a chat icon, a device icon, a zoom level of "24%", and navigation arrows. The main area contains two prototype screens. The first screen, titled "Launchpad", features a "Home" header and a "Vehicle Prestart" section with four buttons: "Find Vehicle", "Perform Prestart", "Find Prestart", and an empty box. The second screen, titled "Find Vehicle", has a "Perform Prestart" header and contains several form fields and text elements: "Sink field" with a value of "0", "Current Notifications (1)", "Previous Status" with a value of "Do not operate", "Prestart completed today (0)", "Hemmer Ending" with a value of "Last Measurement Reading 23,456", "Date & Time" with a value of "21.03.2020 14:12", and "Reported by" with a value of "Jeff Albert".

BUILD

WORKSPACE Fortescue Vehicle Prestart PROTOTYPE

Vehicle Prestart

Launchpad

Home

Vehicle Prestart

Find Vehicle Perform Prestart Find Prestart

Find Vehicle

Perform Prestart

Sink field 0

Current Notifications (1)

Previous Status Do not operate

Prestart completed today (0)

Hemmer Ending Last Measurement Reading 23,456

Date & Time 21.03.2020 14:12

Reported by Jeff Albert

# Behind the scenes



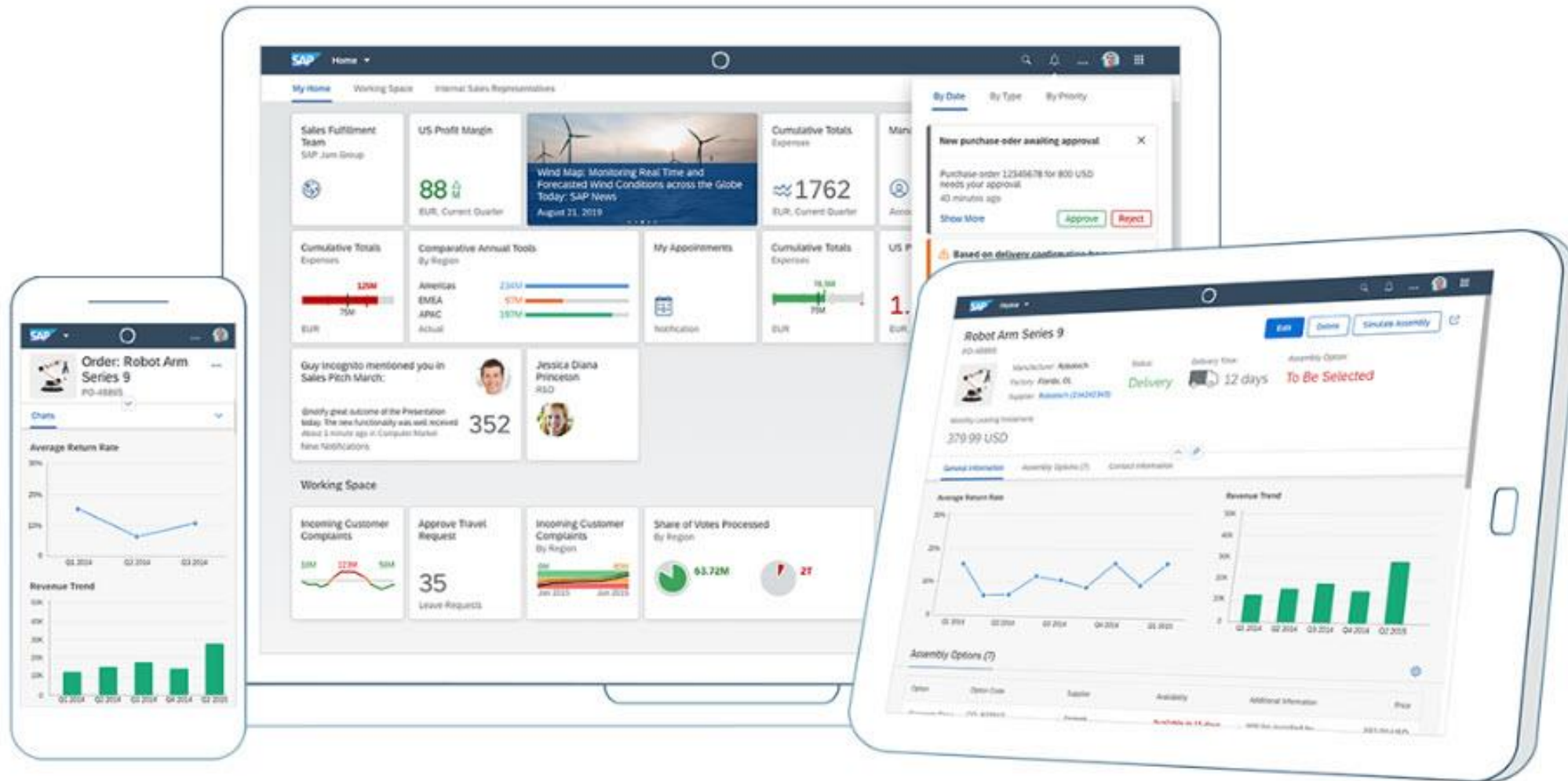
- Feedback from stakeholders
- Scope the finer details
- Move nice to have's, to the next phase
- Development begins
- User Acceptance Testing
- Quick Reference Guide



# Running in Fiori



# SAP Fiori





# Fortescue Vehicle Prestart

The screenshot displays the Fortescue Fiori Launchpad interface within a web browser. The browser's address bar shows the URL 'Home'. The interface features a dark blue header with the Fortescue logo, a 'Home' dropdown menu, and navigation links for 'Fiori Launchpad', 'Favourites', 'Asset Management', 'Procurement', 'Supply Chain', and 'Accounts Payable'. A user profile icon labeled 'JA' is visible in the top right corner. The main content area is titled 'Recently Added Apps' and contains four application tiles. The first two tiles, 'Perform Prestart PH0521 - 1GIP891' and 'Perform Prestart PH0660', both show a blue truck icon, a large red '0', and the text 'No Prestart Today'. The third tile, 'Start SAP GUI', features a blue square icon. The fourth tile, 'SuccessFactors', is currently empty. A vertical sidebar on the right side of the interface contains various system icons, including a search icon, a plus sign, and a settings icon.

# Take aways



- Stakeholders are number one, ask them questions
- Understand the existing process and think outside the box for future processes
- Use build.me to speed up development time
- Break your project into phases



# References



- [Build beautiful apps | BUILD.me](https://www.build.me)  
<https://www.build.me>
- [Design Your First App with Build\\* | openSAP](https://open.sap.com/courses/build1)  
<https://open.sap.com/courses/build1>
- [SAP Fiori Overview: Design, Develop and Deploy | openSAP](https://open.sap.com/courses/fiori3)  
<https://open.sap.com/courses/fiori3>

# Questions





**FORTESCUE  
FUTURE  
INDUSTRIES**



**We are Fortescue**

**[fortescue.com](https://fortescue.com)**



## How to Connect with Me

**E:** [jalbert@fmgl.com.au](mailto:jalbert@fmgl.com.au)

**M:** +61 418 763 748

**Li:** [linkedin.com/in/jalbert81/](https://www.linkedin.com/in/jalbert81/)