



# Global AP Automation at Dole Packaged Foods

**Leslie Chen, Director of Accounting Operations**  
**Daniel Leon, Manager of A/P Operations**  
Dole Packaged Foods

**Reggie Goco, Business Development Manager**  
xSuite North America Inc.

SAPinsider  
Las Vegas

---

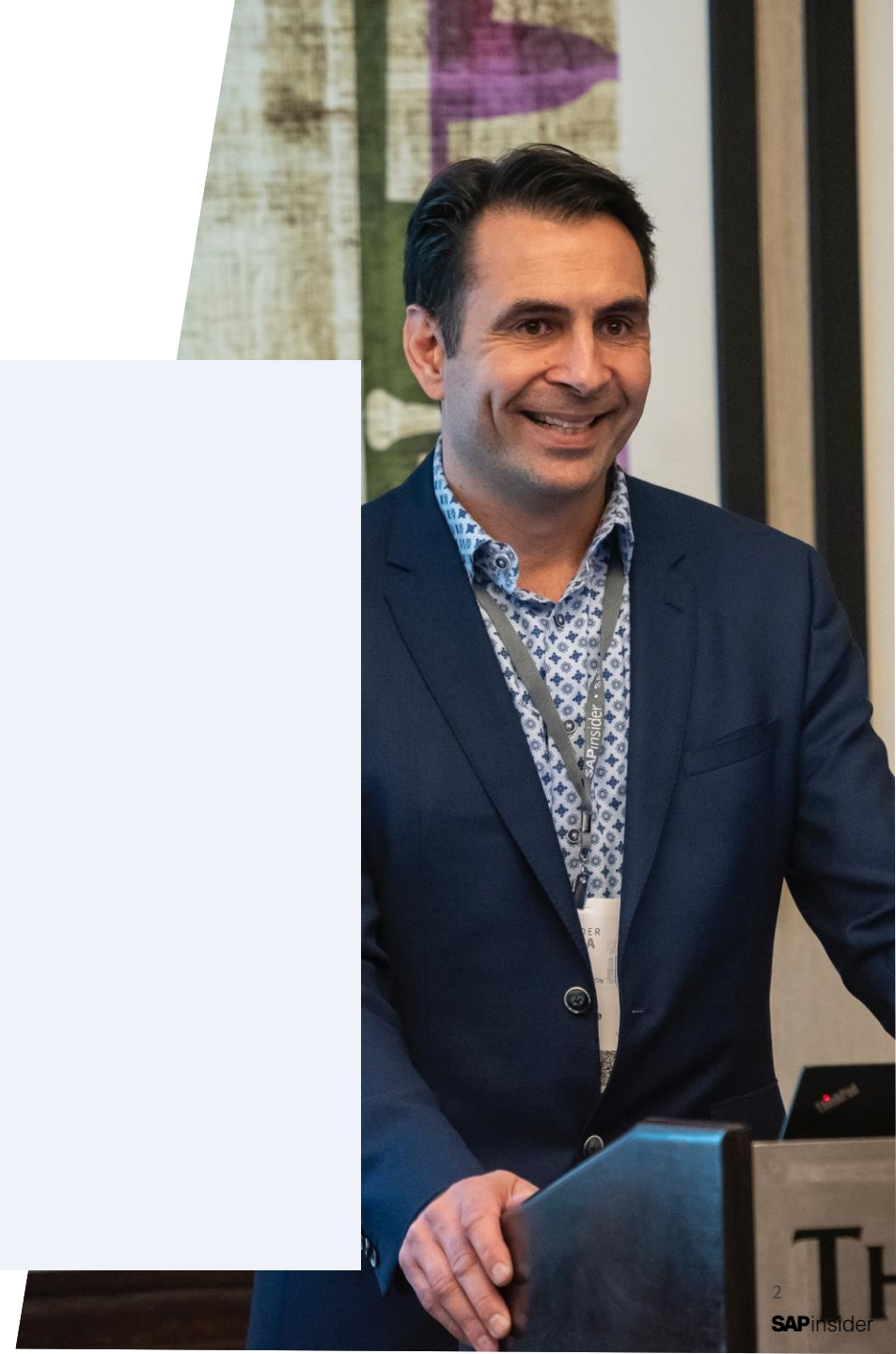
**2023**

**SAP**insider

# What We'll Cover

---

- Introduction to Dole Packaged Foods
- AP before and after automation
- Vendor selection process
- Live demo
- Value proposition
- Wrap-Up





# Speakers

---



**Leslie Chen, CPA** · 1st

Director Of Accounting Operations and Compliance at Dole Packaged Foods, LLC

**Leslie Chen**

**Director of Accounting Operations and Compliance**

**Dole Packaged Foods**

[leslie.chen@doleintl.com](mailto:leslie.chen@doleintl.com)



**Daniel Leon** · 1st

A/P Operations Manager at Dole Packaged Foods, LLC

**Daniel Leon**

**Manager of Accounts Payable Operations**

**Dole Packaged Foods**

[daniel.leon@doleintl.com](mailto:daniel.leon@doleintl.com)



# Introducing Dole Packaged Foods

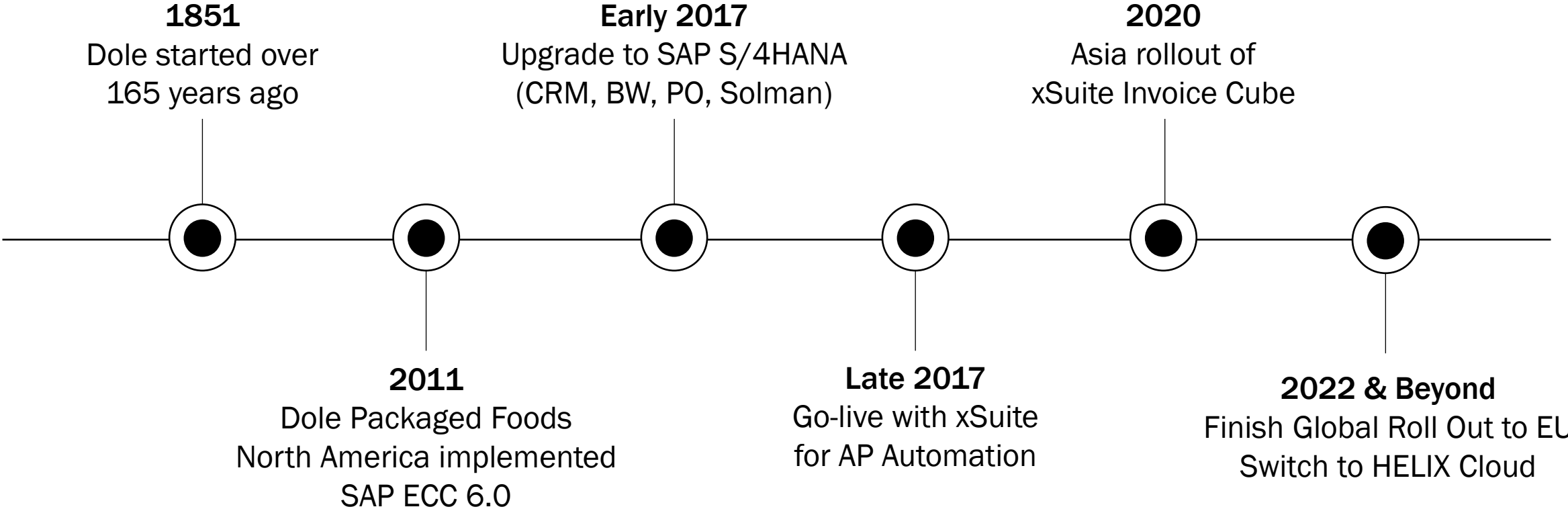
---

- Dole started in 1851
- In 2013, Dole Packaged Foods was sold to Itochu Corporation, Tokyo based company
- Dole Packaged Foods operates Globally with North America revenue of about \$1.2 billion
- Corporate Office located in Westlake Village, CA
- Fruits are sourced globally – Philippines, Thailand, China, Atwater California and more.
- Roughly about 200 employees in North America
- Currently on SAP S/4 HANA



# Information Technology at Dole Packaged Foods

---





# Accounts Payable at Dole

## Reasons for Automation

---

### Before Automation

- Many different systems and processes with nothing to tie together or link back to SAP documents (no visibility of end-to-end invoice processing)
- Manual paper-based coding and approvals
- Manual entry to FB60 and MIRO (manual filing too)
- Battalion of people to resolve any issues and zero cash discounts
- Costa Rica AP, Westlake Accounting, Buyer, Approver, and IT

### After Automation

- Allowed the Transfer A/P Processing to any location globally (Philippines)
- Better Controls (inside SAP), Easier Reporting, and Transparency
- Reduced Human Errors

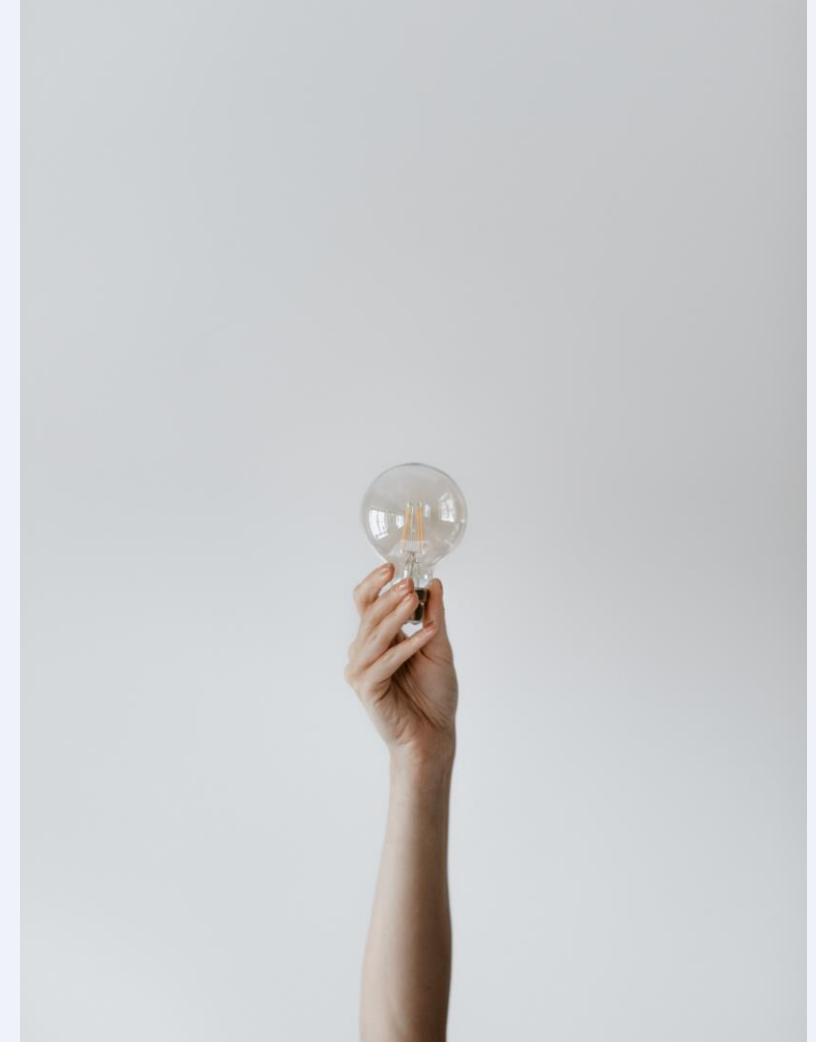


# Project Requirements

## (Vendor Selection Check List)

---

- Intuitive, easy to use was a must
- It needs to be inside SAP (as opposed to a 3<sup>rd</sup> party website)
- All the documents, back ups, schedules, etc. must be stored inside SAP and (even available outside).
- Price tag has to fit cost-cutting savings
- Integrate with SAP and Office 365
- OCR capabilities infused with the latest technologies like AI – automatic coding if possible and approvals.
- AP and beyond
- Implementation Time must be “quick” (less than 6 months)
- Available in Fiori and the Web
- Manoeuvrable workflows
- *Building inside SAP was not an option due to cost and time investment involved*



# AP Automation with xSuite Invoice

---

- See an invoice processed through xSuite Invoice
- Automated workflow
- Document archiving and retrieval

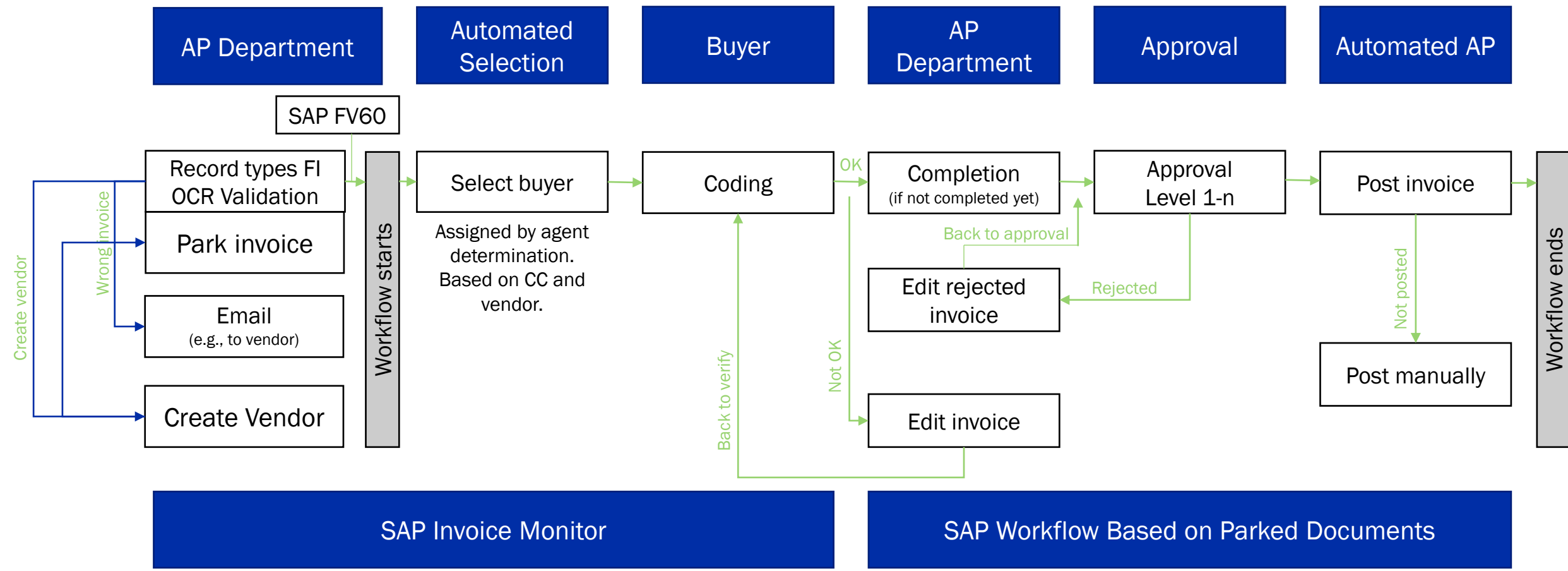
## KEY HIGHLIGHTS:

- Invoice Monitor
- Invoice Overview
- Reset & Restart Workflows
- Escalation & Substitutions
- Master Data Triggers





# xSuite AP at Dole Packaged Foods



# Project Implementation and Timeline

---

- Smooth Go Live (minimal training of transaction codes)
- Price tag below budget and delivered on time across 3 locations (Canada, United States, and Costa Rica)
- Integration with SAP and Office 365 for all xSuite Invoice Cube workflows and data archiving images and documents
- OCR capabilities for recognition, data extraction and data validation
- Beyond AP – implementing xSuite Orders Cube for customers
- Project only took 3 months to Go Live



# Thank you! Any Questions?

---

**Leslie Chen**

Director of Accounting Operations and Compliance at  
Dole Packaged Foods // [leslie.chen@doleintl.com](mailto:leslie.chen@doleintl.com)

**Daniel Leon**

Manager of Accounts Payable Operations at Dole  
Packaged Foods // [daniel.leon@doleintl.com](mailto:daniel.leon@doleintl.com)

**Reggie Goco**

Business Development Manager at xSuite North  
America Inc. // [reggie.goco@xsuite.com](mailto:reggie.goco@xsuite.com)

Please remember to complete  
your session evaluation.

**VISIT US AT BOOTH  
405**



# SAPinsider



## SAPinsider.org

PO Box 982Hampstead, NH 03841  
Copyright © 2023 Wellesley Information Services.  
All rights reserved.

SAP and other SAP products and services mentioned herein as well as their respective logos are trademarks or registered trademarks of SAP SE (or an SAP affiliate company) in Germany and other countries. All other product and service names mentioned are the trademarks of their respective companies. Wellesley Information Services is neither owned nor controlled by SAP SE.

---

SAPinsider comprises the largest and fastest growing SAP membership group worldwide, with more than 600,000 members across 205 countries.

---