

Life After BPC: How do SAP Group Reporting and SAP Analytics Cloud Support Effective Processes

Dr. Marco Sisfontes-Monge— Dec 1, 2021

New York, USA

THE MOST TRUSTED INDEPENDENT
INFORMATION SOURCE FOR SAP
ENTERPRISE SOFTWARE CONTENT

SAPINSIDER COMMUNITY
500,000+ STRONG



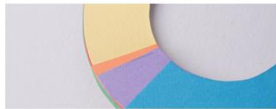
Dr. Marco Sisfontes-Monge



FINANCIAL MANAGEMENT ARTICLES
Creating a Real-Time Cash Flow Report Using SAP S/4HANA Group Reporting
 Reading time: 16 mins



AI & MACHINE LEARNING ARTICLES
Performing Planning and Calculations in SAP Analytics Cloud (SAC): Working with Data Actions
 Reading time: 11 mins



DATA & ANALYTICS ARTICLES
Oil and Gas Industry Spotlight: A Conceptual Look at How to Apply SAP BusinessObjects Planning and Consolidation to Upstream Operations
 Reading time: 11 mins



FINANCIAL MANAGEMENT & REPORTING ARTICLES
Creating Dynamic Charts and Tables Using SAP Analytics Cloud
 Reading time: 7 mins



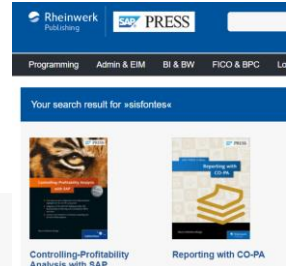
SALES MANAGEMENT ARTICLES
Leverage SAP Integrated Business Planning for Forecasting
 Reading time: 3 mins



SALES MANAGEMENT ARTICLES
Creating Customized Status and Tiles with SAP S/4HANA Extended Analytics
 Reading time: 7 mins



FINANCIAL MANAGEMENT ARTICLES
Working with the Data Monitor in SAP S/4HANA Finance for Group Reporting
 Reading time: 12 mins



Dr. Marco Sisfontes-Monge is a managing partner of Arellius Enterprises. For more than 15 years he has supported SAP implementers, direct clients, and other customers in Europe, North America, Latin America, Australia, Asia, Middle East and Africa in the industries of automotive, insurance, pharmaceutical and healthcare, semiconductor, logistics, software, consumer goods, utilities, chemical, oil and gas, exploration and natural resources, discrete and process manufacturing, retail, and financial services. He also has finance specializations from the London Business School and Saïd Business School from University of Oxford in England. You may contact him via email at msisfontes@arelliusenterprises.com.

SERVICES

FINANCIAL AND TECHNOLOGY TRANSFORMATION



- We find the safest route for you, and your major financial transformation projects. We have lead some of the largest projects in Asia, Europe, and USA.. Our broad business experience in different industries allow us to find synergies and expertise among our customer and partner network to satisfy your requirements in any location of the world.

WE SPEAK SAP, BIG DATA, CLOUD...



- Yes we do SAP... we are very very good.. We specialized in turning around projects and supporting large implementers that require niche business expertise in SAP and related technologies.
- Artificial Intelligence, Cloud Computing, Data Science, Financial Modeling, Consolidation, Planning, Supply Chain, Business Analytics, Big Data, Python, HIVE, Spark, and more ... you are in safe hands.

SPECIAL PROJECTS... LET'S WORK TOGETHER AND WE GET IT DONE!



- Our consultants are also great trainers in the same areas we provide services to industry and academia. Our remote learning courses are tailored for fast results, hands-on expertise and with the best technology for remote learning.
- Geographical location, Time Zones, and language are no longer a barrier.

What We'll Cover

SAP BPC Current State

- The BPC Journey
- When your SAP BPC version becomes obsolete

New Tools, New Technology

- More Solutions for Planning and Consolidation
- Finance now more in touch with Supply Chain
- SAP Consolidation concept has been expanded.

Possible Strategies

- Go to the “Dark Side”
- Do Nothing
- BPC “Upgrade”
- Rebuild
- Hybrid

SAP BPC Current State



SAP BPC has been... a LOVE STORY....



www.arelliusenterprises.com

However, there are new options in the horizon....

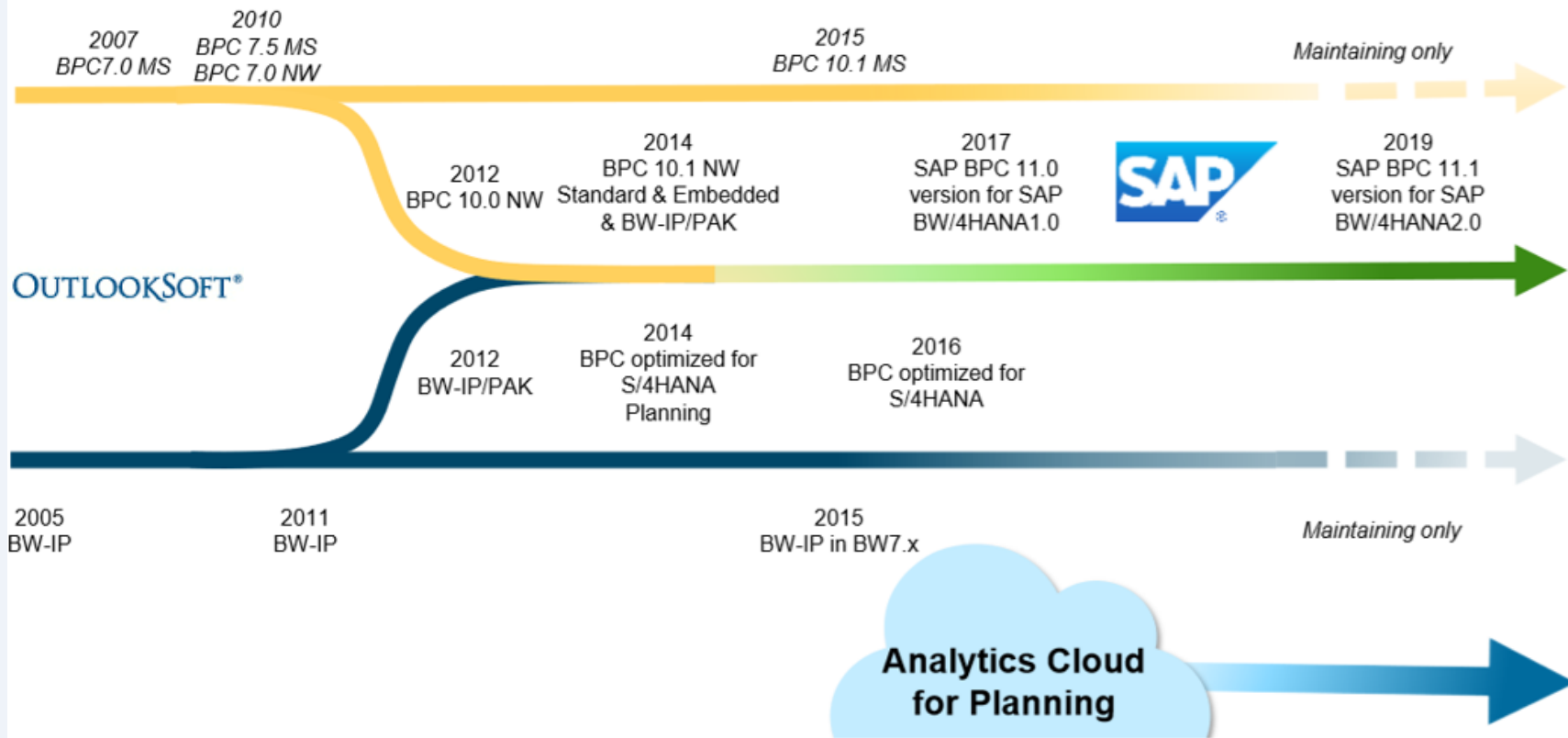


PLANNING



CONSOLIDATION

BPC Journey



NO MORE SAP INVESTMENTS IN SAP BPC

(No more Upgrades, No New Versions, No more Patches)

Product	End of Maintenance
BPC 10.0 MS	12/31/2020 
BPC 10.1 MS	12/31/2024
BPC 10.0 NW	12/31/2020 
BPC 10.1 NW	12/31/2027
BPC 10.1 Optimized for S/4HANA	12/31/2024
BPC 11.0 for BW/4HANA 1	12/31/2021 
BPC 11.1 for BW/4HANA 2	12/31/2024



New Tools, New Technology



Planning



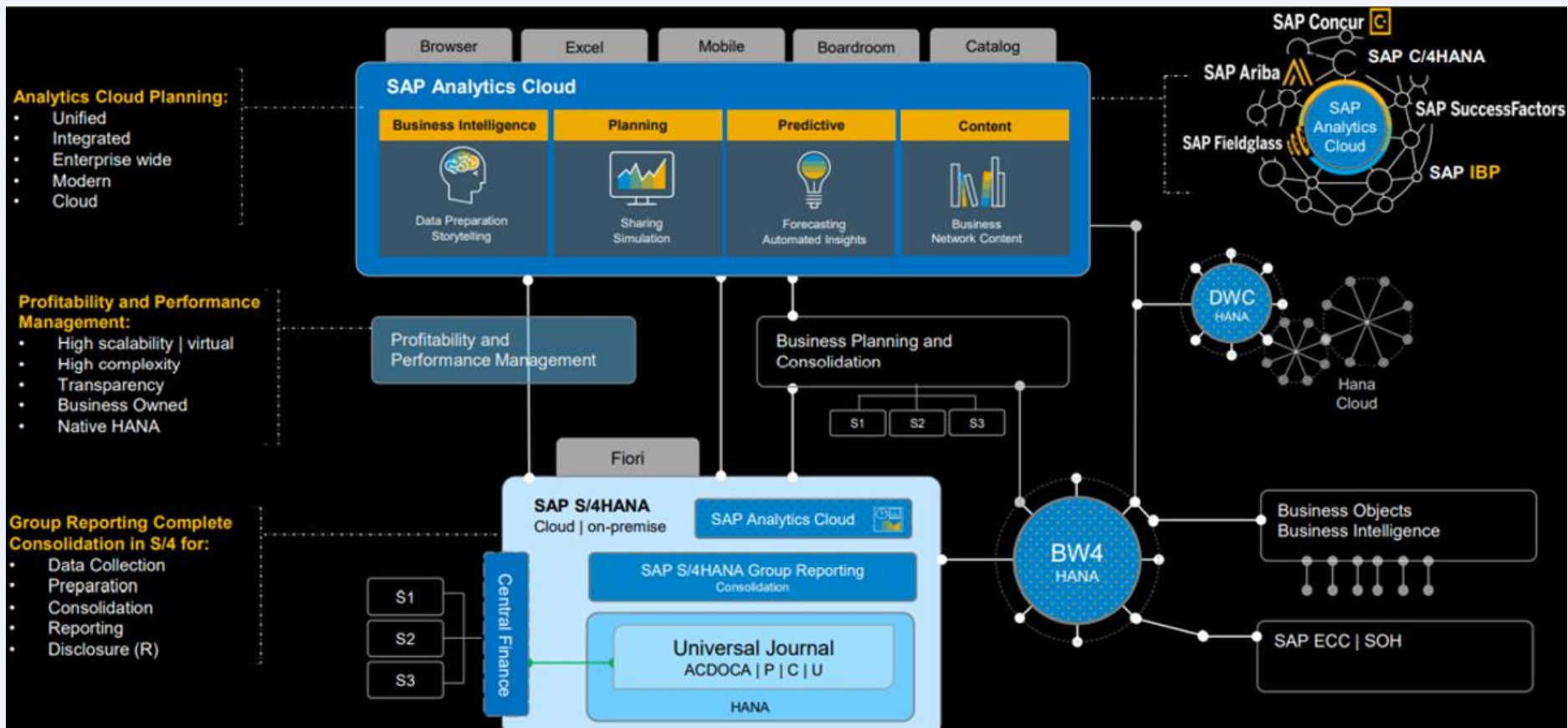
SAP BPC



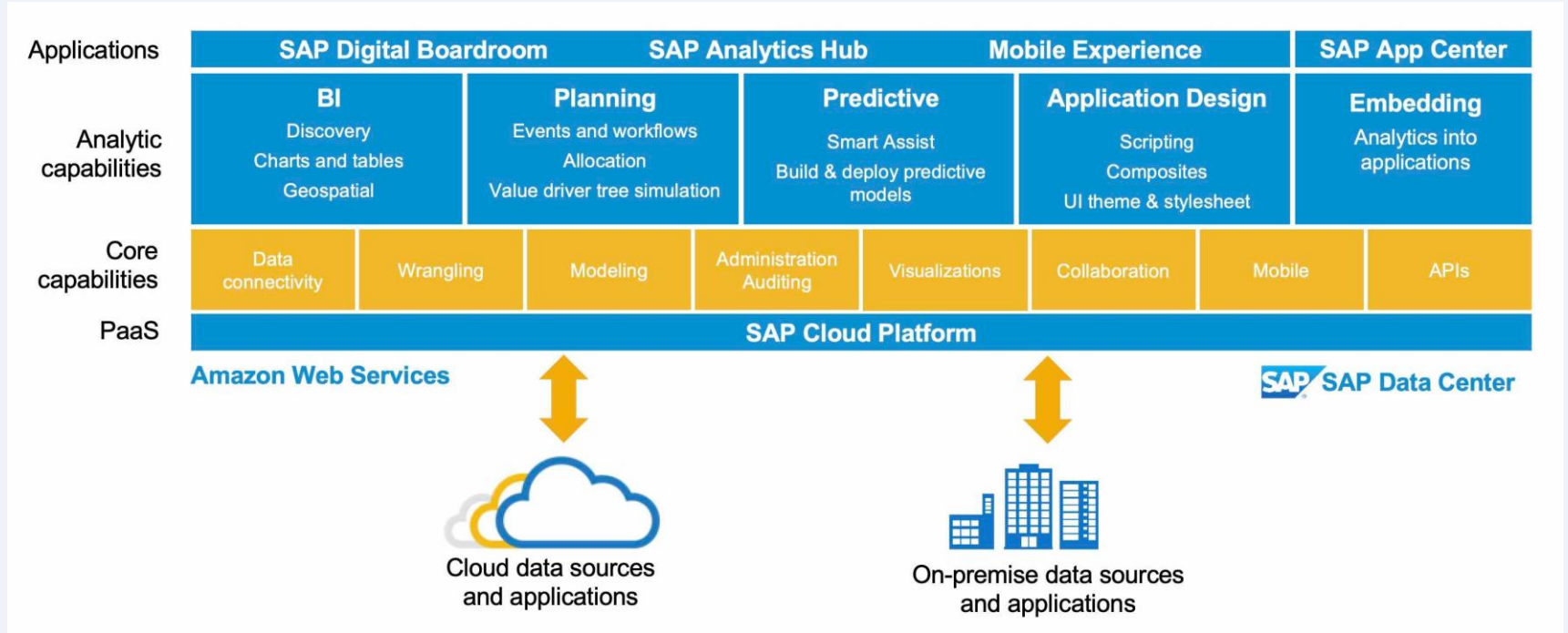
Consolidation

- SAP Analytics Cloud (SAC)
- SAP IBP (Cloud, Supply Chain Solution)
- SAP Profitability and Performance Management (PAM)
- SAP Margin Analysis (COPA)
- SAP S/4 HANA PP/DS ("New APO")

- SAP S/4 HANA for Group Reporting (Consolidation)
- Intercompany Matching & Reconciliation (ICMR)
- SAP S/4 HANA Group Reporting Data Collection. (GRDC)
- SAP S/4HANA Cloud/OP for intelligent intercompany reconciliation (iICR)- Machine Learning
- SAP Disclosure Management



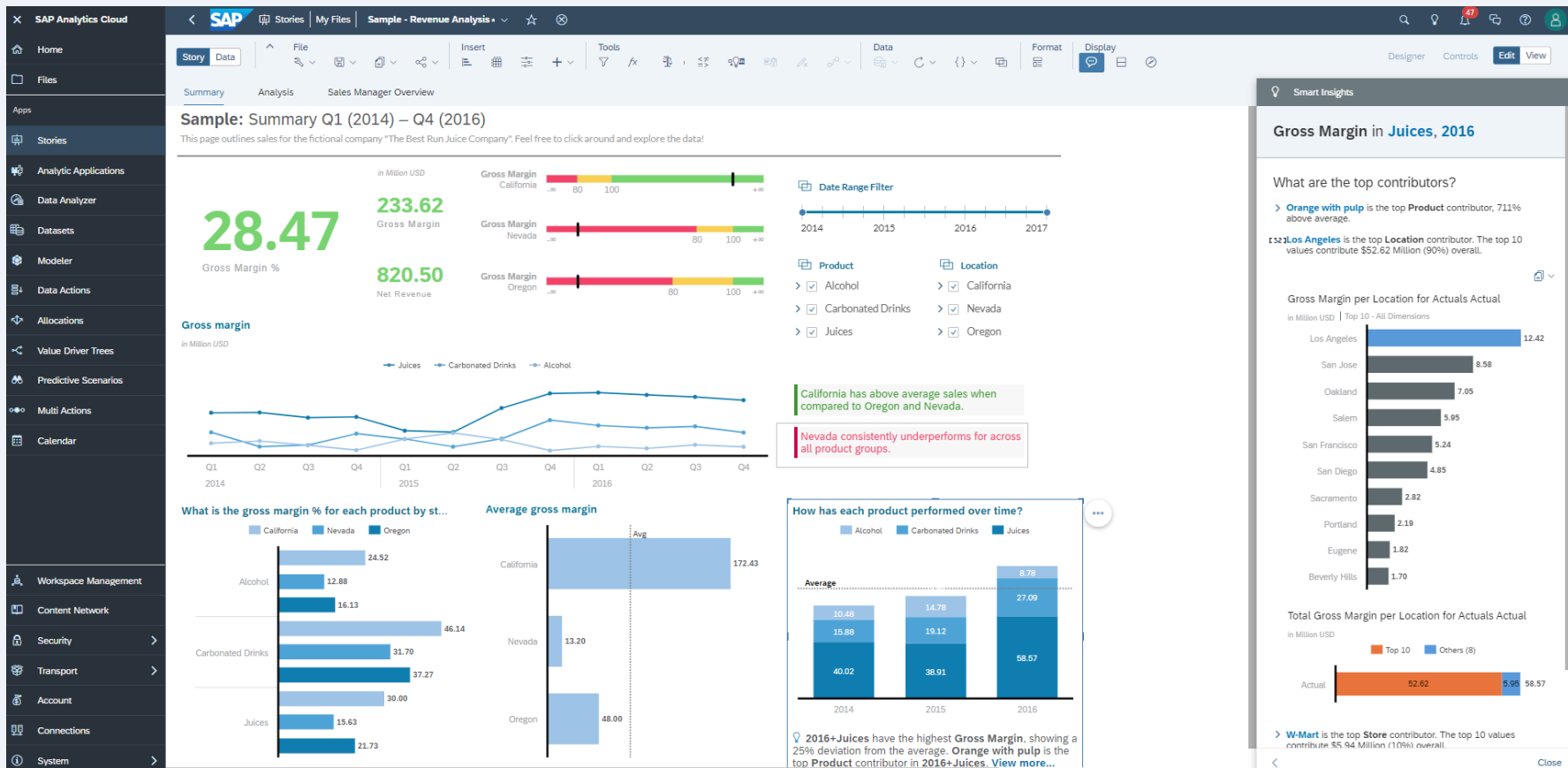
SAP Analytics Cloud (SAC) Architecture



SAP Analytics Cloud (SAC)

SAP												
File Edit Tools Display Publish Data Planning Functions 1 / 2 Controls Edit View												
Consolidation Unit (1) 1710 (Palo Alto)												
SAP Group Reporting Planning Administration Perform Planning Functions SAP Analytics Cloud content												
Group Reporting Profit and Loss and Balance Sheet Planning			▶ Prepare Actuals		▶ Copy P&L and Bala... from Actuals		▶ Calculate Balance S... for Closing		▶ Calculate Balance S... for Changing			
in USD 1 Filter												
			Version	Plan *								
			Time	▼ 2022	P01 (2022)	P02 (2022)	P03 (2022)	P04 (2022)	P05 (2022)	P06 (2022)	P07 (2022)	P08 (
Financial Stateme...	Partner Consolidation Unit	Transaction Type										
> BS and PL	Unassigned	Opening balance		-55,500	-55,500	-47,625	-39,750	-31,875	-24,000	-16,125	-8,250	
		> Changing balance		94,500	7,875	7,875	7,875	7,875	7,875	7,875	7,875	
		Closing balance		39,000	-47,625	-39,750	-31,875	-24,000	-16,125	-8,250	-375	
	Japan	Opening balance		29,000	29,000	27,250	25,500	23,750	22,000	20,250	18,500	:
		> Changing balance		-21,000	-1,750	-1,750	-1,750	-1,750	-1,750	-1,750	-1,750	
		Closing balance		8,000	27,250	25,500	23,750	22,000	20,250	18,500	16,750	:
	USA West	Opening balance		10,100	10,100	6,775	3,450	125	-3,200	-6,525	-9,850	-:
		> Changing balance		-39,900	-3,325	-3,325	-3,325	-3,325	-3,325	-3,325	-3,325	
		Closing balance		-29,800	6,775	3,450	125	-3,200	-6,525	-9,850	-13,175	-:

SAP Analytics Cloud (SAC)

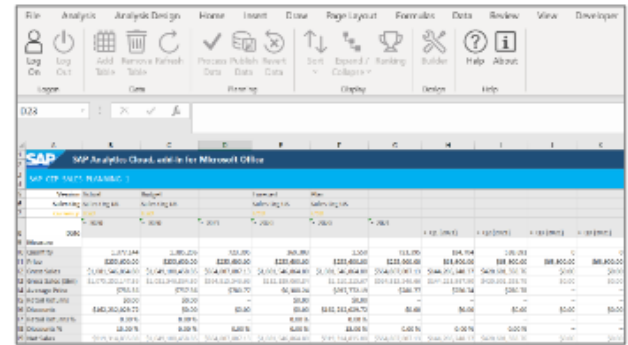
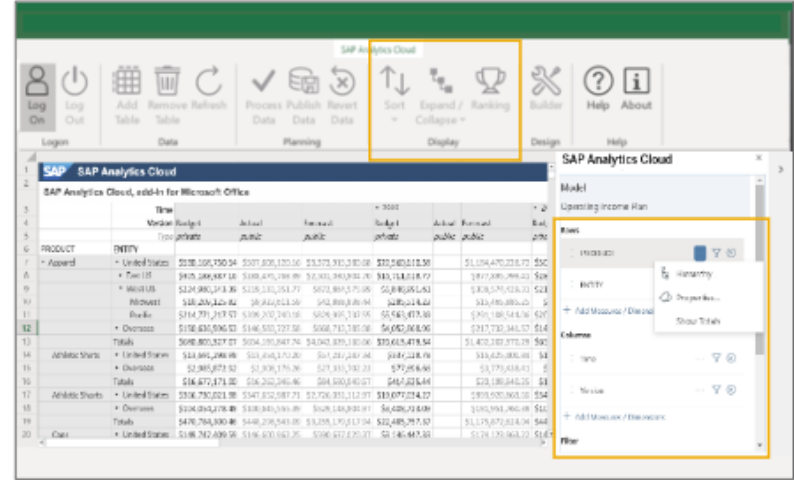
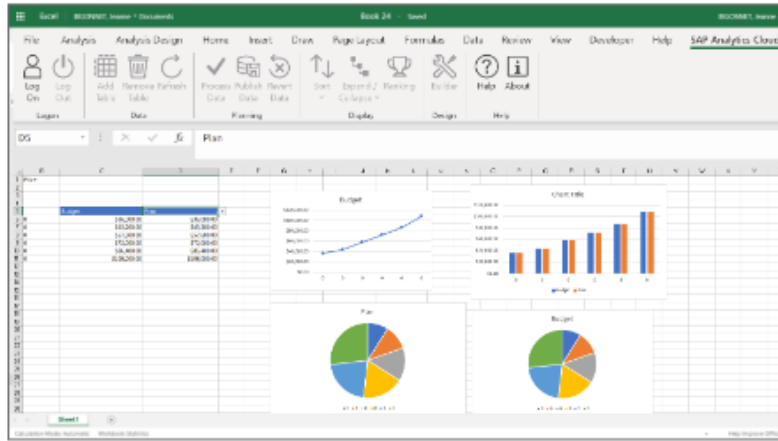


SAP Analytics Cloud (SAC): MS Excel Add-in

SAP Analytics Cloud, add-in for Microsoft Office EXPLORE

Analyze using pivot table experience

- Use built-in formulas and generate ad hoc reports
- Leverage data from your business hierarchies
- Rank, Sort data, create your "Top 10"...



SAP Analytics Cloud (SAC): MS Excel Add-in

Excel | Denford, Joanna > Documents | Book - Saving... | Denford, Joanna

File Home Insert Formulas Data Review View Automate Help **SAP Analytics Cloud** Tell me what you want to do Open in Desktop App Share Comments

Log On Log Out Add Table Remove Table Refresh Process Data Publish Data Revert Data Sort Builder Help About

Logon Data Planning Display Design Help

220 fx 18618501

	Version	Strategic Plan										
		Totals	Q1 (2021)									
	Time		Jan (2021)	Feb (2021)	Mar (2021)							
Operating Account												
Operating Income		\$450,678,234.92	\$450,678,234.92	\$125,808,538.17	\$169,113,903.50	\$155,755,793.25						
Gross Profit		\$635,466,650.23	\$635,466,650.23	\$183,267,622.53	\$229,445,942.07	\$222,753,085.62						
Cost of Goods Sold		\$441,724,158.01	\$441,724,158.01	\$145,762,082.33	\$156,037,228.26	\$139,924,847.42						
Freight		\$1,399,833.59	\$1,399,833.59	\$285,961.33	\$431,792.89	\$682,079.37						
Labor		\$149,717,562.19	\$149,717,562.19	\$49,274,005.76	\$54,025,083.17	\$46,418,473.26						
Other Direct Costs		\$599,928.65	\$599,928.65	\$122,554.83	\$185,054.10	\$292,319.72						
Purchase Price Variance		\$11,959,932.40	\$11,959,932.40	\$4,570,692.61	\$1,063,000.78	\$6,326,239.01						
Raw Materials		\$278,046,901.17	\$278,046,901.17	\$91,508,867.80	\$100,332,297.31	\$86,205,736.07						
Net Revenue		\$1,077,190,808.24	\$1,077,190,808.24	\$329,029,704.87	\$385,483,170.33	\$362,677,933.04						
Operating Expenses		\$184,788,415.30	\$184,788,415.30	\$57,459,084.36	\$60,332,038.58	\$66,997,292.36						
IT Expenses		\$49,356,981.40	\$49,356,981.40	\$15,347,320.09	\$16,114,686.09	\$17,894,975.22						
Other Expenses		\$26,563,980.79	\$26,563,980.79	\$8,259,944.28	\$8,672,941.49	\$9,631,095.03						
Sales and Marketing		\$108,867,453.11	\$108,867,453.11	\$33,851,820.00	\$35,544,410.99	\$39,471,222.11						
Marketing Expenses		\$54,433,726.55	\$54,433,726.55	\$20,000,000.00	\$17,772,205.50	\$19,735,611.06						
Sales Expenses		\$54,433,726.55	\$54,433,726.55	\$18,618,501.00	\$17,772,205.50	\$19,735,611.06						
Excel Calculations												
Sales Expenses	Baseline	Factor	Plan Value									
	16925910	10%	18618501									

SAP Analytics Cloud

Model
Operating_Income_JB

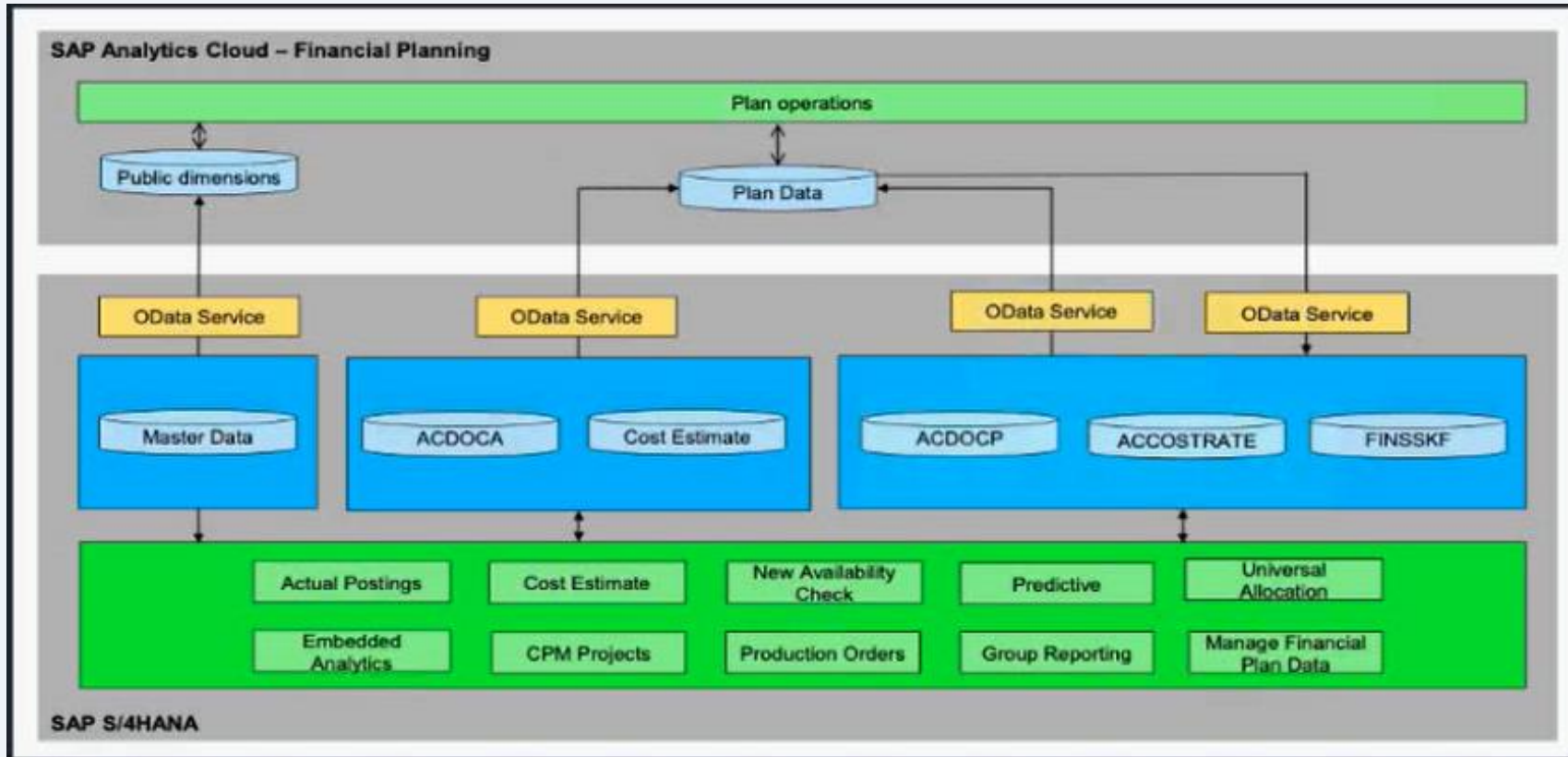
Rows
Operating Account

Columns
Version
Time

Filter
Operating Account
Time

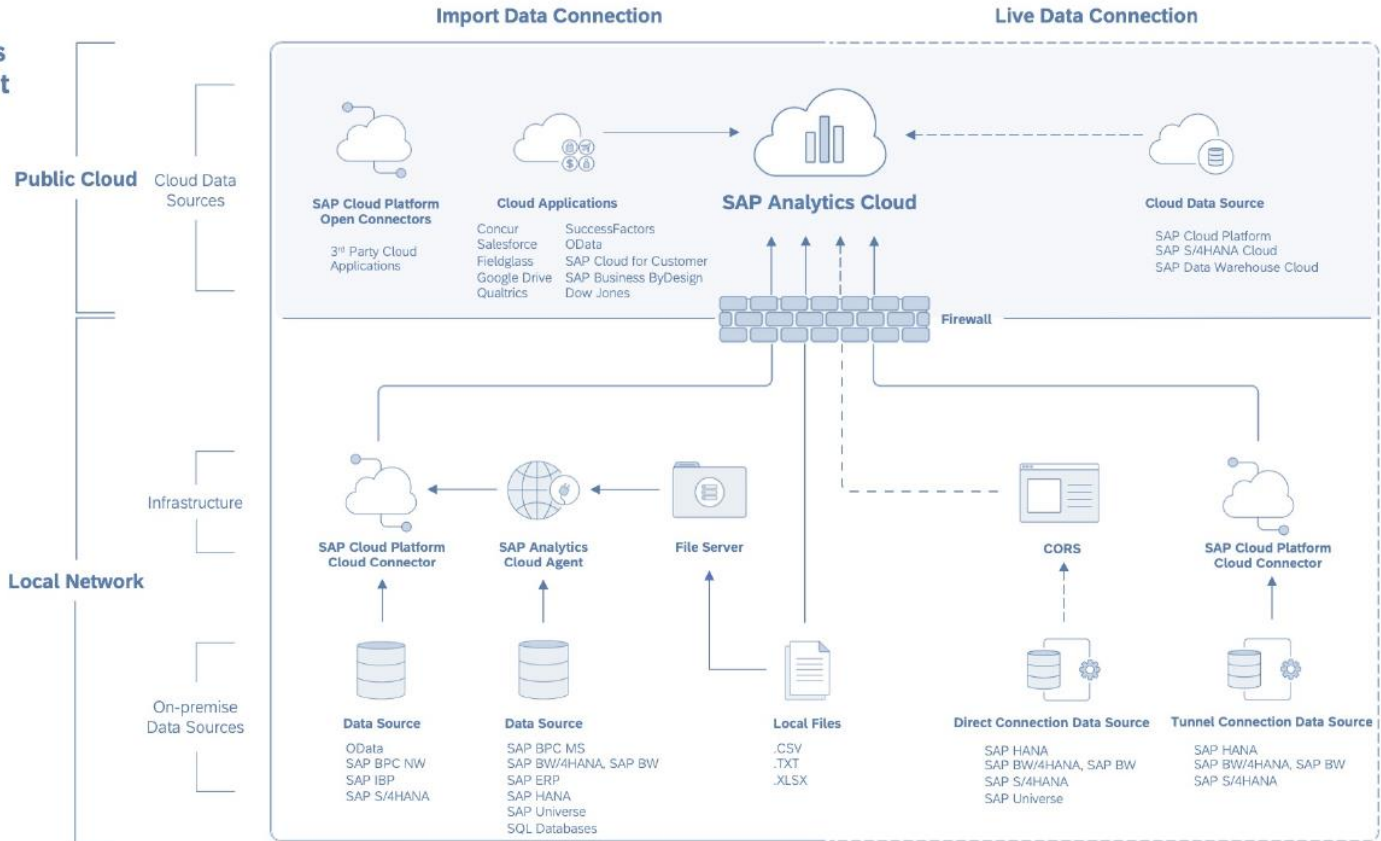
Public edit has been started for version Strategic Plan.

SAP Analytics Cloud (SAC)

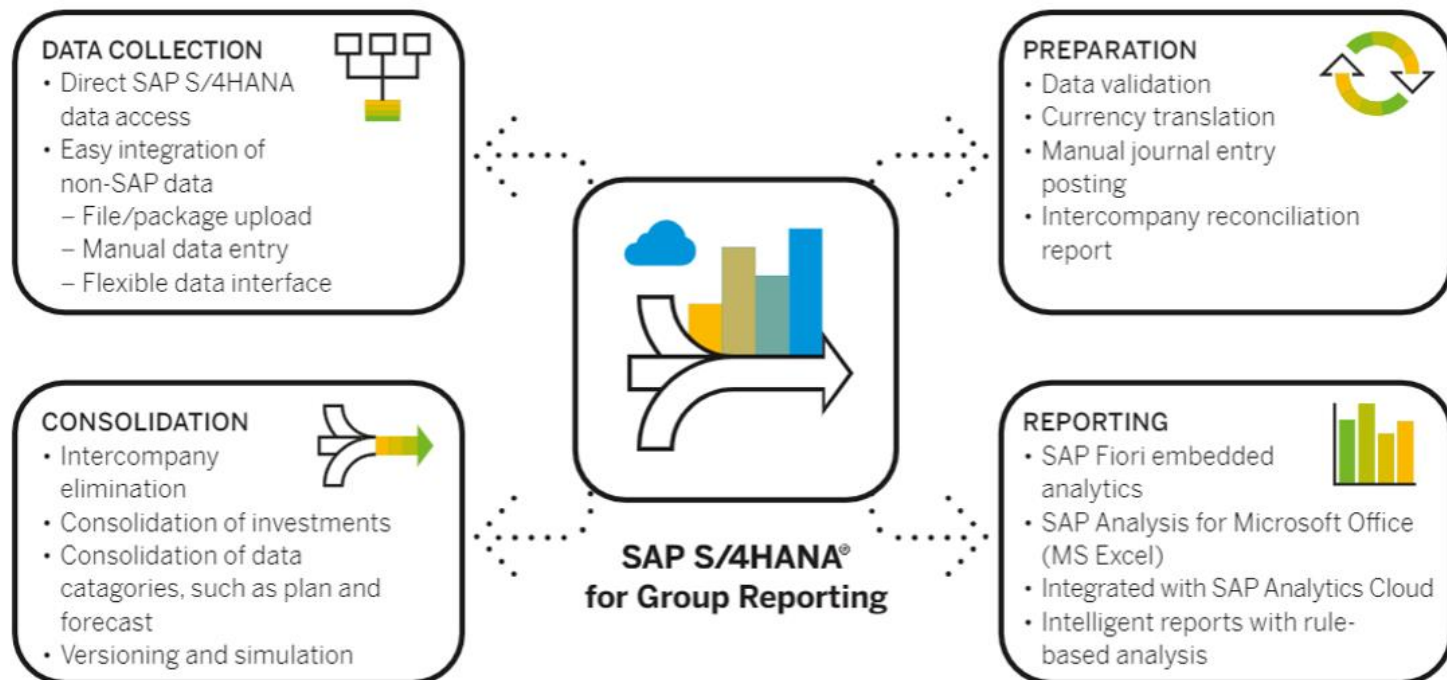


SAP Analytics Cloud (SAC) Interfaces

Data Connections Environment



Group Reporting



SAP S/4HANA for group reporting

SAP Group Reporting Data Collection

Non-SAP sources | Non-financials | Notes



SAP Analytics Cloud

Dashboarding | Analytics | Planning



SAP Disclosure Management

Publish online / print | Electronic filing



SAP S/4HANA



Corporate group
accounting



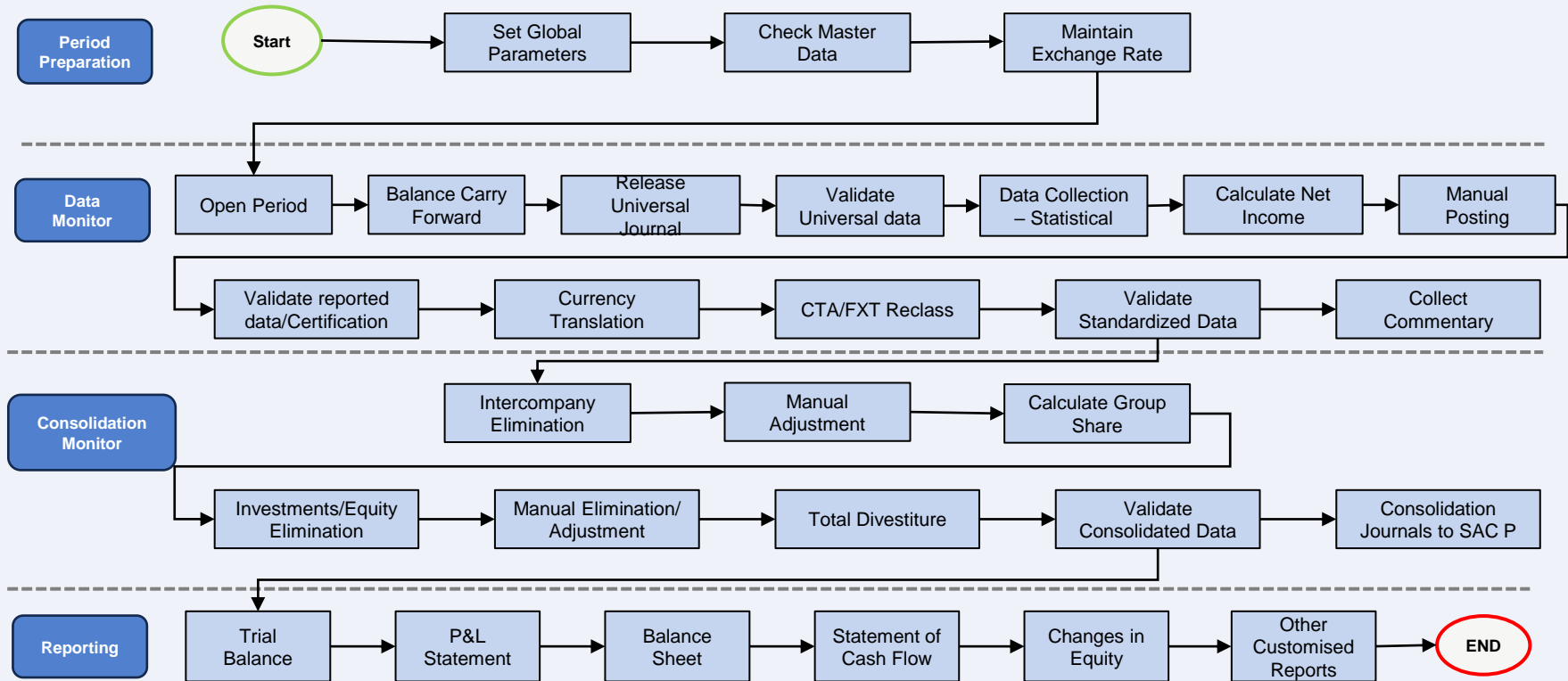
Global/local operational
accounting

NEW



Source systems

SAP Group Reporting Process, SAP S/4 HANA 2020 Version

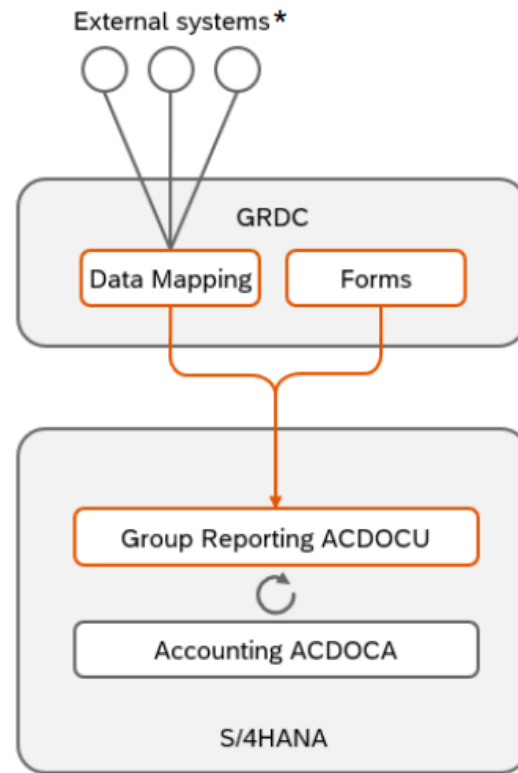


SAP Group Reporting Data Collection (GRDC-Cloud Solution)

Architecture

- Our native cloud app is designed to provide agile and flexible data collection capability in SAP S/4HANA for group reporting.
- You can use SAP Group Reporting Data Collection to automatically load data from external systems - with data mapping - and create forms to collect financial or non-financial data manually in SAP S/4HANA for group reporting - with forms.
- As part of SAP product strategy for consolidation, our native cloud app integrates with SAP S/4HANA for group reporting, whether you use it on premise or in the cloud.
- We use SAP Business Technology Platform (SAP BTP) because it offers users the ability to turn data into business value, compose end-to-end business processes, and build and extend SAP applications quickly.
- By developing SAP Group Reporting Data Collection on SAP BTP, we can deliver innovation at a fast pace: you benefit from new and enhanced features every two weeks.

* SAP or non-SAP



SAP Intercompany Matching & Reconciliation (ICMR)

< **SAP** Manage Assignments ▾ 🔍 👤

Standard * ▾ Hide Filter Bar Filters (3) Go

*Reconciliation Case ID: ZF001 (Intercompany... ▾) *Display Group: Intercompany AR->AP ▾ *Company: C1000 ⓘ *Fiscal Year Period: 011 2019 Amount Field: ⓘ Currency: ⓘ Trading Partner: ⓘ

Leading Unit: Unassigned (18) ZF001/Standard * ▾ 🔍 📄 ⚙️ 📄 ▾

<input type="checkbox"/>	Proc. Status	Comm. Status	Due Date	Clearing ...	Amnt in Trans. CrCY	Clearing Date	Clearing Doc.
<input type="checkbox"/>	10 (In Contact)	20 (Email Sent)	08.10.2019	N/A	-10,00 EUR		
<input type="checkbox"/>	01 (Roll-In)	(Not Started)		N/A	-10,00 EUR		
<input type="checkbox"/>	01 (Roll-In)	(Not Started)		N/A	-10,00 EUR		
<input type="checkbox"/>	10 (In Contact)	20 (Email Sent)	19.09.2019	N/A	-20,00 EUR		
<input type="checkbox"/>	10 (In Contact)	20 (Email Sent)	19.09.2019	N/A	-10,00 EUR		
<input type="checkbox"/>	01 (Roll-In)	(Not Started)		N/A	-10,00 EUR		
<input type="checkbox"/>	01 (Roll-In)	(Not Started)		🟢 Cleared	-100.000,00 EUR	23.08.2019	100000072
<input type="checkbox"/>	01 (Roll-In)	(Not Started)		🔴 Open	10,00 EUR		

Selected Amount

Partner Units: Unassigned (5) ZF001/Standard * ▾ All ▾ 🔍 📄 ⚙️ 📄 ▾

<input type="checkbox"/>	Proc. Status	Comm. Status	Due Date	Clear...	Amnt in Trans. CrCY	Assignment Ref.
<input type="checkbox"/>	10 (In Contact)	20 (Email Sent)		🔴 Open	-952.913,75 EUR	
<input type="checkbox"/>	10 (In Contact)	10 (Note Added)	29.10.2019	🔴 Open	-952.953,00 EUR	Accrual
<input type="checkbox"/>	10 (In Contact)	10 (Note Added)		🔴 Open	-1.905.926,0... EUR	
<input type="checkbox"/>	10 (In Contact)	20 (Email Sent)	07.10.2019	🔴 Open	-952.953,00 EUR	
<input type="checkbox"/>	10 (In Contact)	10 (Note Added)		🔴 Open	1.905.905,26 EUR	

Selected Amount

Assignments (6) Show Created in Las... ▾ Process Unassign ***

<input type="checkbox"/>	Assignment Number	Reason Code	Workflow Status	Adjustment Log
<input type="checkbox"/>	100000603639	S10 (Variance can be ad...		
<input checked="" type="checkbox"/>	100000587721	S10 (Variance can be ad...	Completed 📄	🟢 Success (1)
<input checked="" type="checkbox"/>	100000587719	S10 (Variance can be ad...	Completed 📄	🟢 Success (1)
<input type="checkbox"/>	100000587718	S10 (Variance can be ad...		
<input type="checkbox"/>	100000587717	S50 (Documents open a...		
<input type="checkbox"/>	100000587713	S00 (Data matched with...		

Assigned Items ZF001/Standard ▾ 📄 🔍 ⬆️ ⬆️ ⚙️ 📄 ▾

<input type="checkbox"/>	s...	Amnt in Trans. CrCY	Amnt in Company ...	Amnt in Global Cur...	Quantity	D...	P...	Tran...	Busine...	Assignment Ref.
✓ Assignment Number: 100000587721										
<input type="checkbox"/>		100.000,00 EUR	100.000,00 EUR	100.000,00 EUR	0,000	S	40		RFBU	POA900003
<input type="checkbox"/>		-99.900,00 EUR	-109.890,00 USD	-99.900,00 EUR	0,000	H	50		RFBU	POA900003
		100,00 EUR		100,00 EUR	0,000					
✓ Assignment Number: 100000587719										
<input type="checkbox"/>		100.000,00 EUR	100.000,00 EUR	100.000,00 EUR	0,000	S	40		RFBU	POA900001
<input type="checkbox"/>		-99.900,00 EUR	-109.890,00 USD	-99.900,00 EUR	0,000	H	50		RFBU	POA900001
		100,00 EUR		100,00 EUR	0,000					
		200,00 EUR		200,00 EUR	0,000					

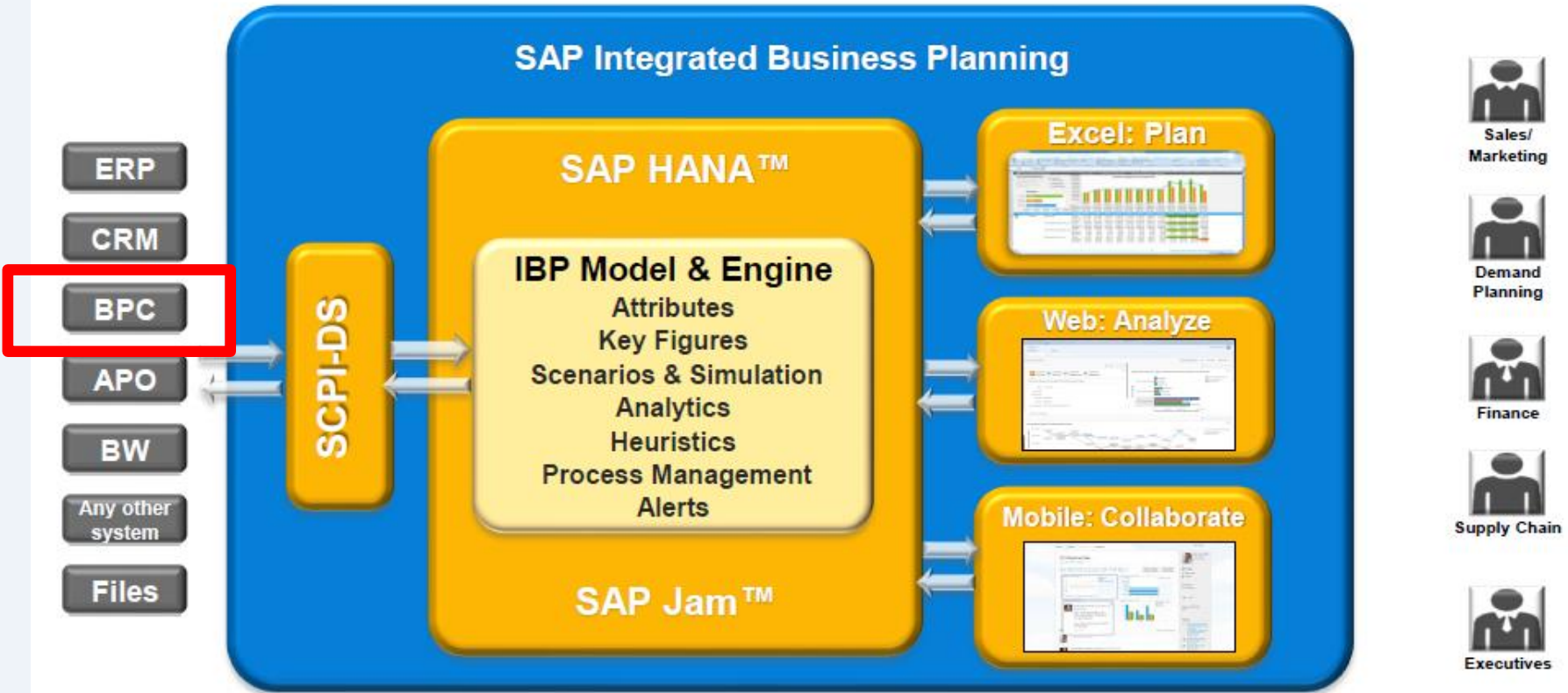
UPGRADE from SAP ERP Intercompany (ICR)

SAP S/4HANA Cloud/OP for intelligent intercompany reconciliation (iICR) (Machine Learning)

There are 6 main components in the architecture:

1. **Matching Engine** is the existing ICMR matching engine. It adds an AI agent to enable the connection with the ICR Service and ISLM.
2. **ICMR ML Apps** include the scheduling apps for training and inference, and a monitoring app to monitor the data sending and receiving.
3. **ISLM** (Intelligent Scenario Lifecycle Management) is used for the lifecycle management of ML models, for example, model deployment, model activation, and training and inference status monitoring.
4. **ICR Service** is deployed on BTP and exposed as RESTful endpoints. It does some pre- and post-processing to the training and inference data.
5. **GLIM** (Generic Line Item Matching) trains the matching models and runs the inference.
6. **ML Foundation** provides the underlying ML functionalities.

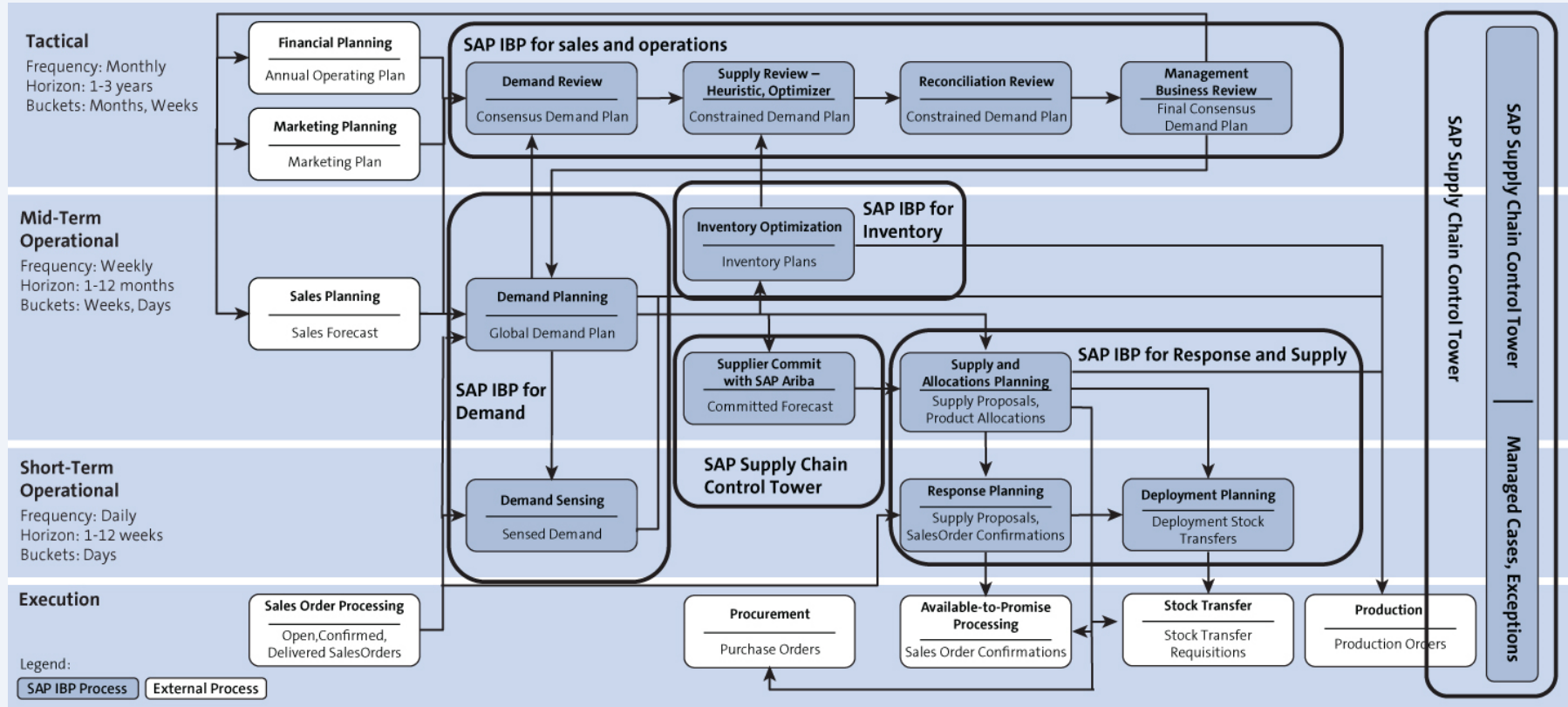
SAP IBP Architecture



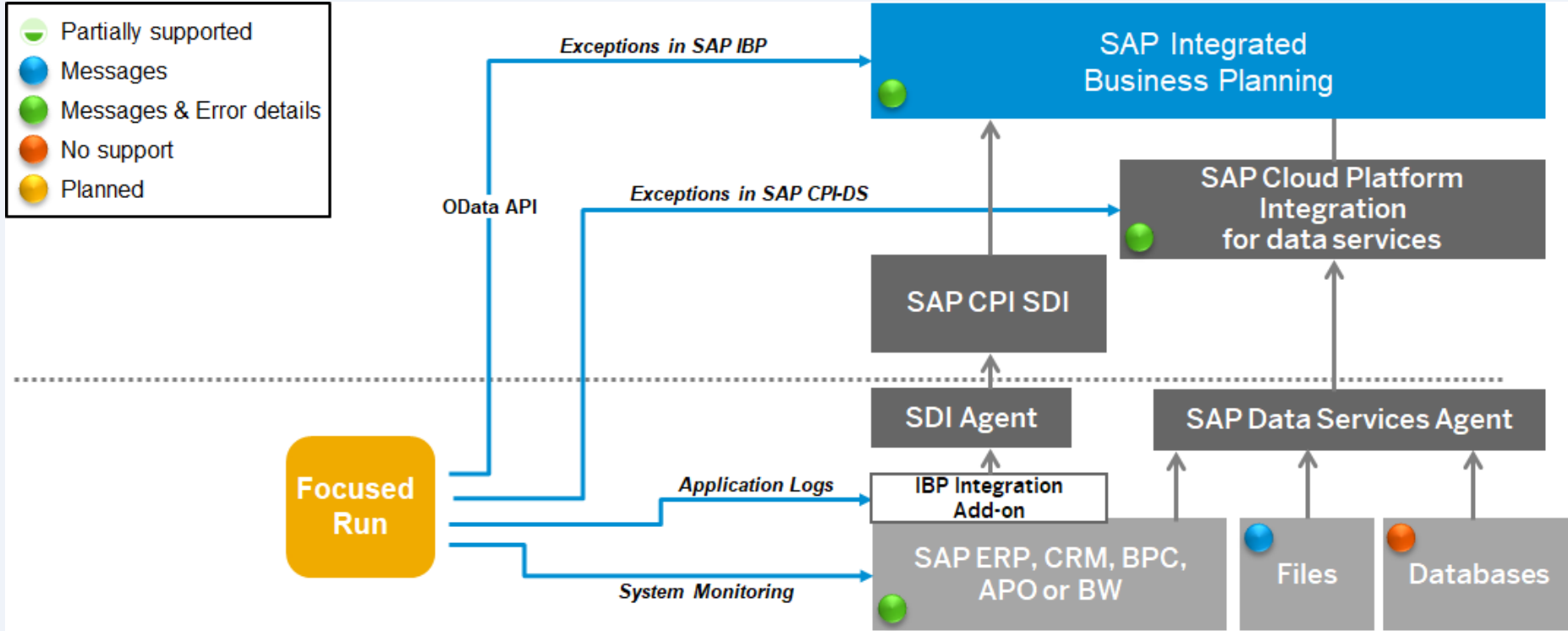
SAP IBP vs SAP BPC

Feature/Topic	BPC	IBP
Architecture	<ul style="list-style-type: none">• Embedded in S/4 HANA• Embedded in BW for ECC	<ul style="list-style-type: none">• Suite Application (Cloud)
Functionality, Reporting and Algorithms	<ul style="list-style-type: none">• Specific to Financial Planning	<ul style="list-style-type: none">• Specific to Supply Chain Planning
Data	<ul style="list-style-type: none">• Main access to data is ERP and IBP actuals and master data tables in SAP ECC or S/4 HANA	<ul style="list-style-type: none">• Main access to data is ERP and BPC actuals and master data tables in SAP ECC or S/4 HANA
Application/ Workbooks	<ul style="list-style-type: none">• Front-End Excel Add-On and Fiori Applications	<ul style="list-style-type: none">• Front-End Excel Add-On and Fiori Applications
Integration across different solutions	<ul style="list-style-type: none">• Seamless to ECC or S/4 HANA and IBP with SAP HCI/SDI	<ul style="list-style-type: none">• Seamless to ECC or S/4 HANA and BPC with SAP HCI/SDI
Integration Across Processes	<ul style="list-style-type: none">• Real time connection/integration across different processes (e.g. P&L)	<ul style="list-style-type: none">• Real time connection/integration across all SC processes

SAP IBP Detailed Overview



SAP IBP Connectors



New Interface: RTI (Real-time Integration expected to replace SDI for order-based information)

Possible Strategies



Strategy 1: “Go to the Dark Side”



- Leave SAP for the next big thing.
- Limitations on Servers.
- Lower your standards on support.
- Find “Trust” again.
- **REBUILD** ...maybe as good



Strategy 2: Do Nothing

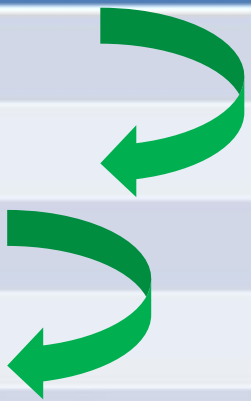


- You have time or NOT
- “Manage with workarounds”
- Limited new enhancements
- Limited or NO upgrades
- Limited Support or None at all.
- Get used to the word “OBSOLETE”



Strategy 3: BPC “Upgrade”

Product	End of Maintenance
BPC 10.0 MS	12/31/2020 ❌
BPC 10.1 MS	12/31/2024
BPC 10.0 NW	12/31/2020 ❌
BPC 10.1 NW	12/31/2027
BPC 10.1 Optimized for S/4HANA	12/31/2024
BPC 11.0 for BW/4HANA 1	12/31/2021 ❌
BPC 11.1 for BW/4HANA 2	12/31/2024

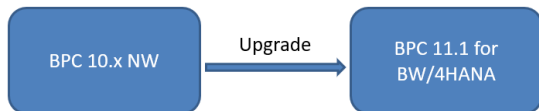


- Migrate to “New” BPC with better End of Maintenance.
- Extend your BPC product support.



Strategy 3: BPC “Upgrade”

Options – for BPC NW Customers



BPC Standard

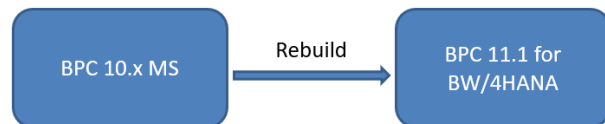
- Easiest migration: Backup/Restore
- Continue to use EPM Add-in

BPC Embedded

- Easy migration
- Rewrite logic to gain performance
- Continue to use A4O

New licenses required

Options – for BPC MS Customers

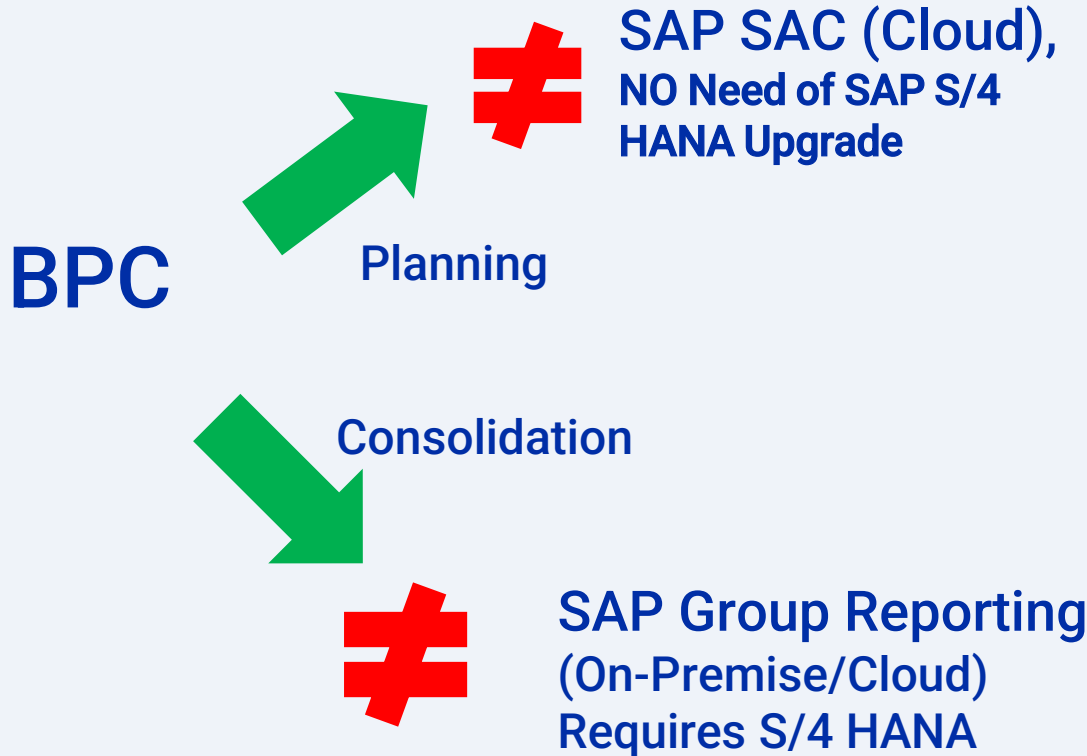


- Migration is a rebuild
- Requires more SAP IT support (than BPC MS)
- SAC strategy suggests this is not an approach suggested by SAP

New licenses required



Strategy 4: SAP Rebuild



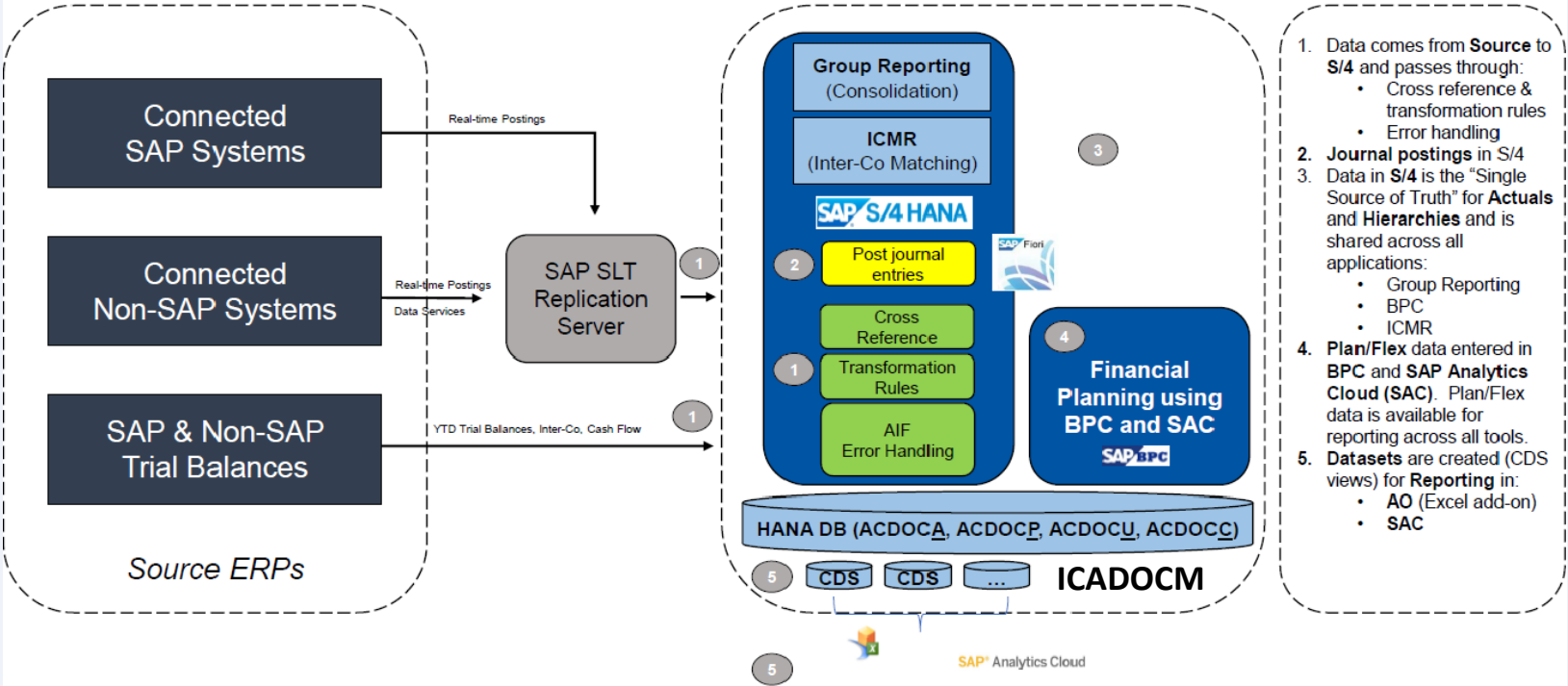
- New “EVERYTHING”
- New Products and New Licenses.
- New functionality
- New Servers Cloud or S/4 HANA Migration.
- S/4 HANA on-premise servers or Cloud Servers or On-Premise versions hosted on the Cloud.
- New Reporting Applications.
- SAP SAC MS Excel Add-in limited vs Analysis for Office (AFO).
- Reporting of SAC data in AFO you need bring it from SAP SAC to BW4 HANA.
- SAP Group Reporting web-based Fiori Ad-hoc Reporting + AFO integration using CDS Views for SAP S/4 HANA and Embedded Analytics.
- SAP Group Reporting significant differences across versions. Always upgrade to the latest **SAP S/4 HANA 2108** currently.

Strategy 5: Hybrid



- Best of both Worlds.
- Move Forward and Migrate at your own time.
- Take advantage of new tools and functionality
- Explore the newer cloud offerings to avoid Migration of your SAP S/4, ECC, R/3 environments, and SAP BW systems.
- SAP BW is linked to SAP BPC, so you need to be also aware of its implications in support for NW clients.

Example Hybrid Environment: SAP BPC, Group Reporting, SAC, ICMR, Embedded Analytics, AFO



Wrap Up



Key Points to Take Home

- Consider SAP BPC as an “obsolete” product.
- SAP BPC MS customers it is recommended evaluate SAP SAC for planning, and SAP S/4 HANA solutions hosted on the cloud.
- SAP BW is another product that is entering maintenance and support status, so review the implications to your current installation.
- Hybrid Approach is the BEST SOLUTION to have BPC in your landscape.
- BOTH SAP SAC and SAP Group Reporting have Business Content.
- SAP Group Reporting version 2020 and higher are very solid and stable solutions.
- BOTH SAP SAC and SAP Group Reporting can receive SAP BPC data.
 - SAP SAC: multiple interfaces to send and receive SAP BPC data.
 - SAP Group Reporting: ACDOCP table designed to receive Planned data from any source, not only SAP BPC.
- There are significant differences in functionality between BPC and newer SAP product offerings so ask for help.
- Yes, you can fall in love again.....



Where to Find More Information

- <https://www.sap.com/products/cloud-analytics/get-started.html>
 - SAP Analytics Cloud
- <https://www.sap.com/products/s4hana-financial-consolidation.html>
 - SAP S/4 HANA Group Reporting
- <https://roadmaps.sap.com/board?q=SAP%20BPC&range=FIRST-LAST#Q1%202020>
 - SAP BPC Roadmap

Merry Oxmas! And Merry Xmas!!!



THANK YOU

Dr. Marco Sisfontes, Managing Partner

Arellius Enterprises Inc, New York, USA

msisfontes@arelliusenterprises.com



PO Box 982Hampstead, NH 03841
Copyright © 2021 Wellesley Information Services. All rights reserved.

SAP and other SAP products and services mentioned herein as well as their respective logos are trademarks or registered trademarks of SAP SE (or an SAP affiliate company) in Germany and other countries. All other product and service names mentioned are the trademarks of their respective companies. Wellesley Information Services is neither owned nor controlled by SAP SE.