

#askSAP Analytics Innovations Community Call:

SAP BI Strategy & Roadmap

June 9, 2015




Legal disclaimer

The information in this presentation is confidential and proprietary to SAP and may not be disclosed without the permission of SAP. This presentation is not subject to your license agreement or any other service or subscription agreement with SAP. SAP has no obligation to pursue any course of business outlined in this document or any related presentation, or to develop or release any functionality mentioned therein. This document, or any related presentation and SAP's strategy and possible future developments, products and or platforms directions and functionality are all subject to change and may be changed by SAP at any time for any reason without notice. The information in this document is not a commitment, promise or legal obligation to deliver any material, code or functionality. This document is provided without a warranty of any kind, either express or implied, including but not limited to, the implied warranties of merchantability, fitness for a particular purpose, or non-infringement. This document is for informational purposes and may not be incorporated into a contract. SAP assumes no responsibility for errors or omissions in this document, except if such damages were caused by SAP's willful misconduct or gross negligence.

All forward-looking statements are subject to various risks and uncertainties that could cause actual results to differ materially from expectations. Readers are cautioned not to place undue reliance on these forward-looking statements, which speak only as of their dates, and they should not be relied upon in making purchasing decisions.

SAP Analytics Innovations Community Call Series

- 
- Quarterly series for the BI community hosted by SAP Analytics
 - An opportunity for you to direct the discussion, get your questions answered, and end the session with some useful advice
 - Live and interactive 90 minutes
 - Connect on topics before, during, and after the call via twitter using #askSAP

Today's Speakers



Jayne Landry
Global VP and GM
Business Intelligence
SAP
@jaynelandry



Ty Miller
VP of Business Intelligence
Product Management
SAP
@wtymiller



Saurabh Abhyankar
Senior Director
Product Management
SAP
@saurabha



Joyce Butler
SAP
Mentor
Nexeo Solutions
@_ButlerJ

Agenda

1

BI Solutions from SAP

Vision and
Strategy Updates

2

Data Discovery and Visualization

Latest Innovations
and Product
Roadmap

3

Enterprise Business Intelligence

Latest Innovations
and Product
Roadmap

4

Data Center Management

Introducing
SAP IT
Operations
Analytics

5

#askSAP Your Questions

BI Solutions from SAP

Vision and Strategy Updates



Massive amounts of data...

1 billion

Facebook
users

**Data
doubles**

every 18
months

5 billion

in emerging
middle class

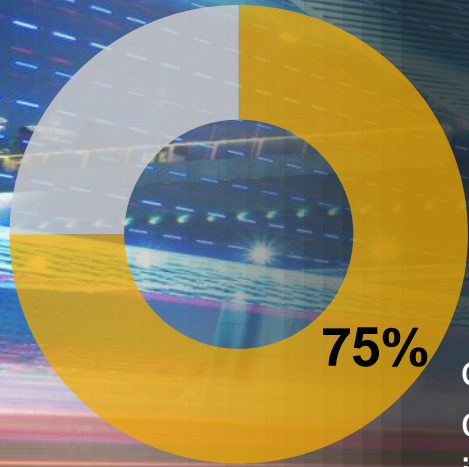
4 billion

YouTube views
per day

**15
billion**

web-enabled
devices

But too few opportunities to capitalize



75% of analytics customers are increasing their budgets – none are decreasing them*

Inaccessible data and technology

Insights remain hidden

Silos of approaches and analytics technologies

Complexity, cost, confusion

Rear view mirror BI mentality

Slow decision making lacking future view

Inability to see, understand, and optimize new opportunities

New challenges and expectations

Data has changed

IT

User expectations
have changed

Business users



Unleash your creative and analytic genius

Agility & creativity for the business

SAP Lumira | Flexible | Fun

+

Scale & trust for the enterprise

Enterprise BI | Simplify | Engage



Grow our stable core & transition to the cloud

Cloud Solutions

IaaS | PaaS | SaaS

+

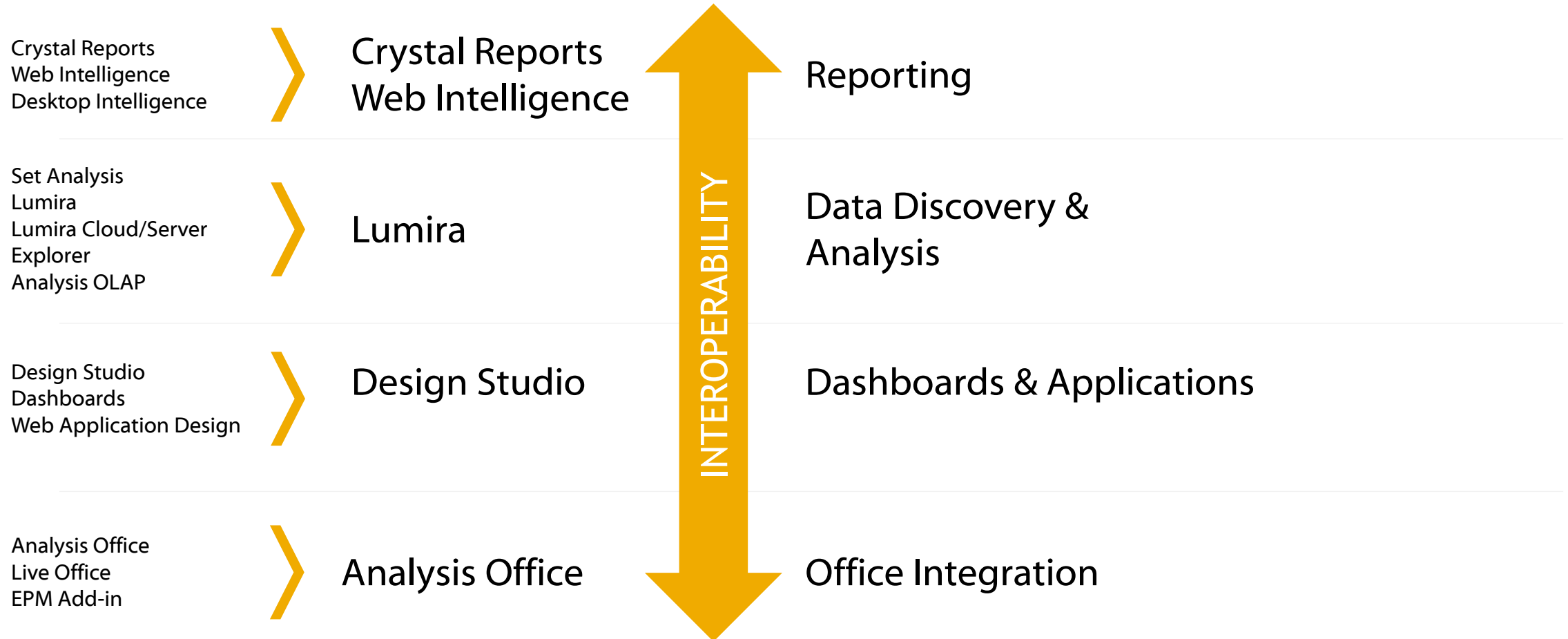
On-Premise Solutions

Enterprise BI | SAP Lumira



Simplify the landscape with use case convergence

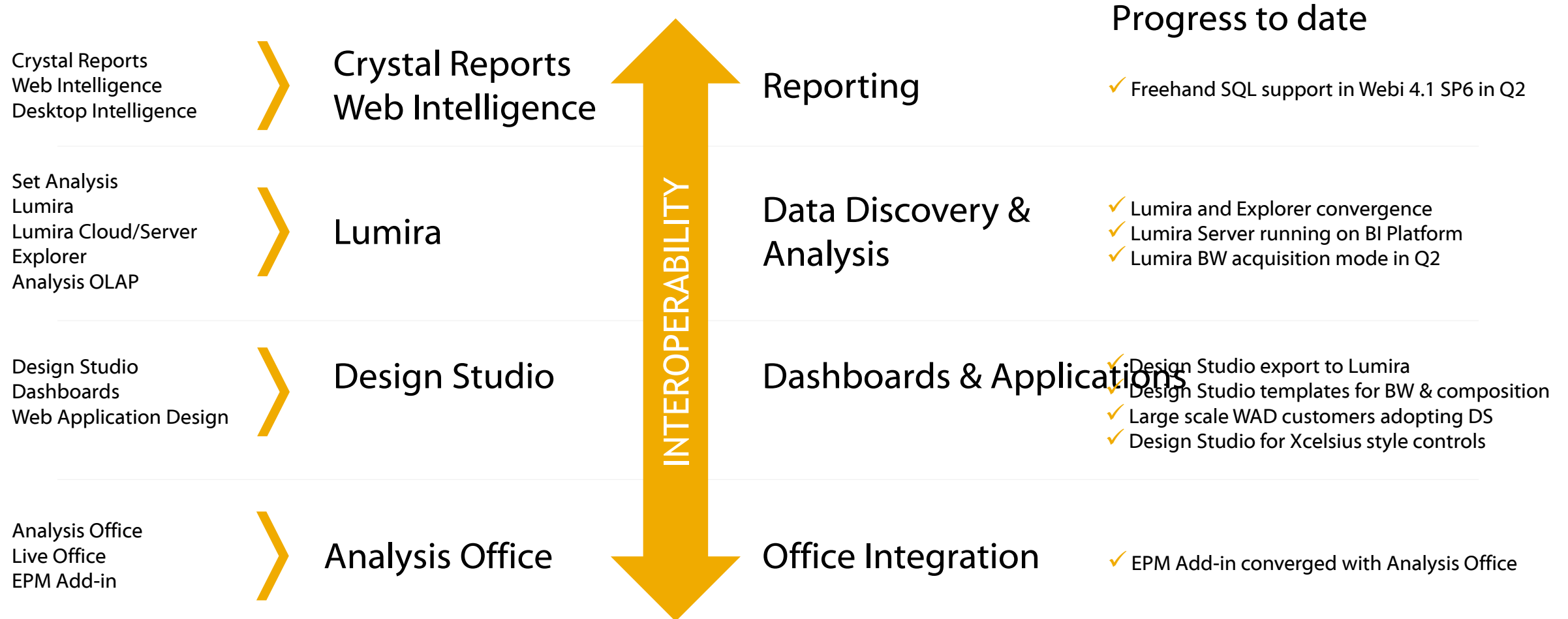
See more details in Jayne Landry's [Run Simple: Convergence of the SAP BusinessObjects BI Product Portfolio](#) blog



This presentation and SAP's strategy and possible future developments are subject to change and may be changed by SAP at any time for any reason without notice. This document is provided without a warranty of any kind, either express or implied, including but not limited to, the implied warranties of merchantability, fitness for a particular purpose, or non-infringement. © 2015 SAP SE or an SAP affiliate company. All rights reserved.

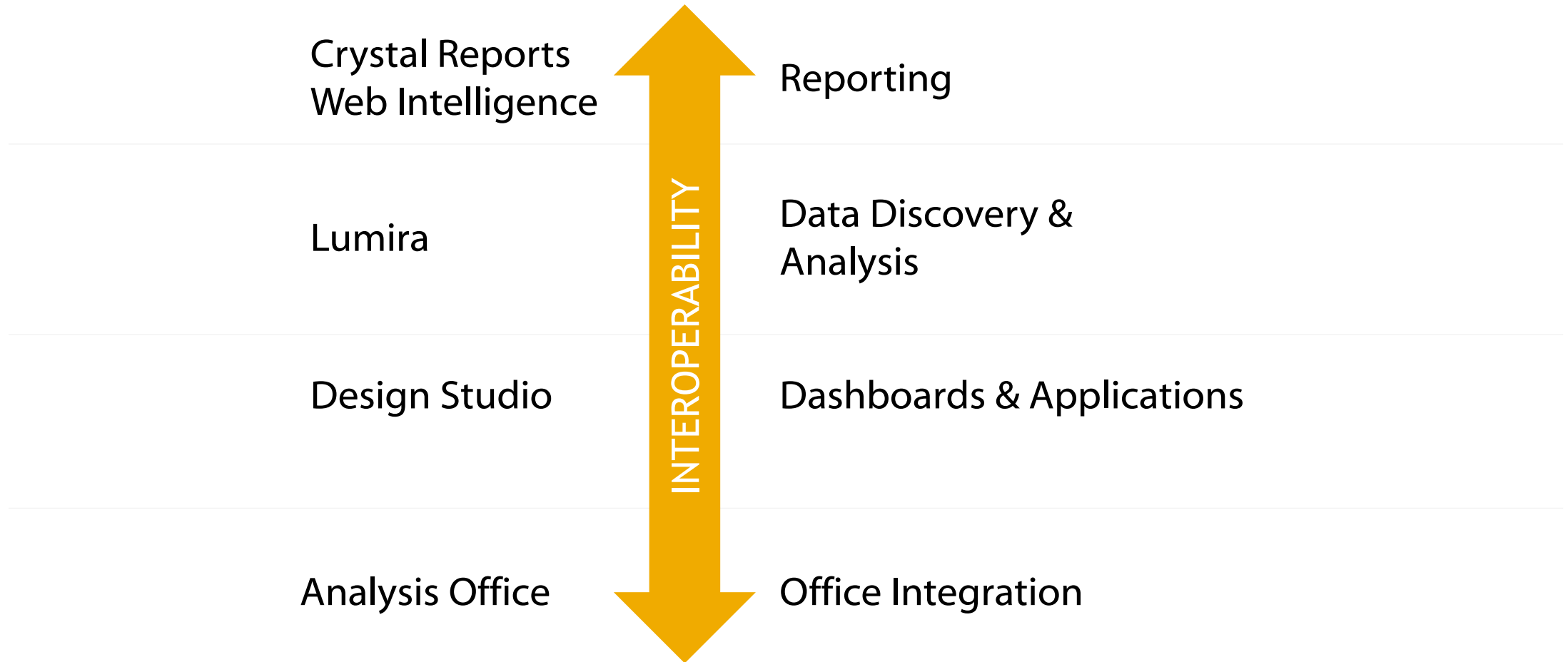
Simplify the landscape with use case convergence

See more details in Jayne Landry's [Run Simple: Convergence of the SAP BusinessObjects BI Product Portfolio](#) blog



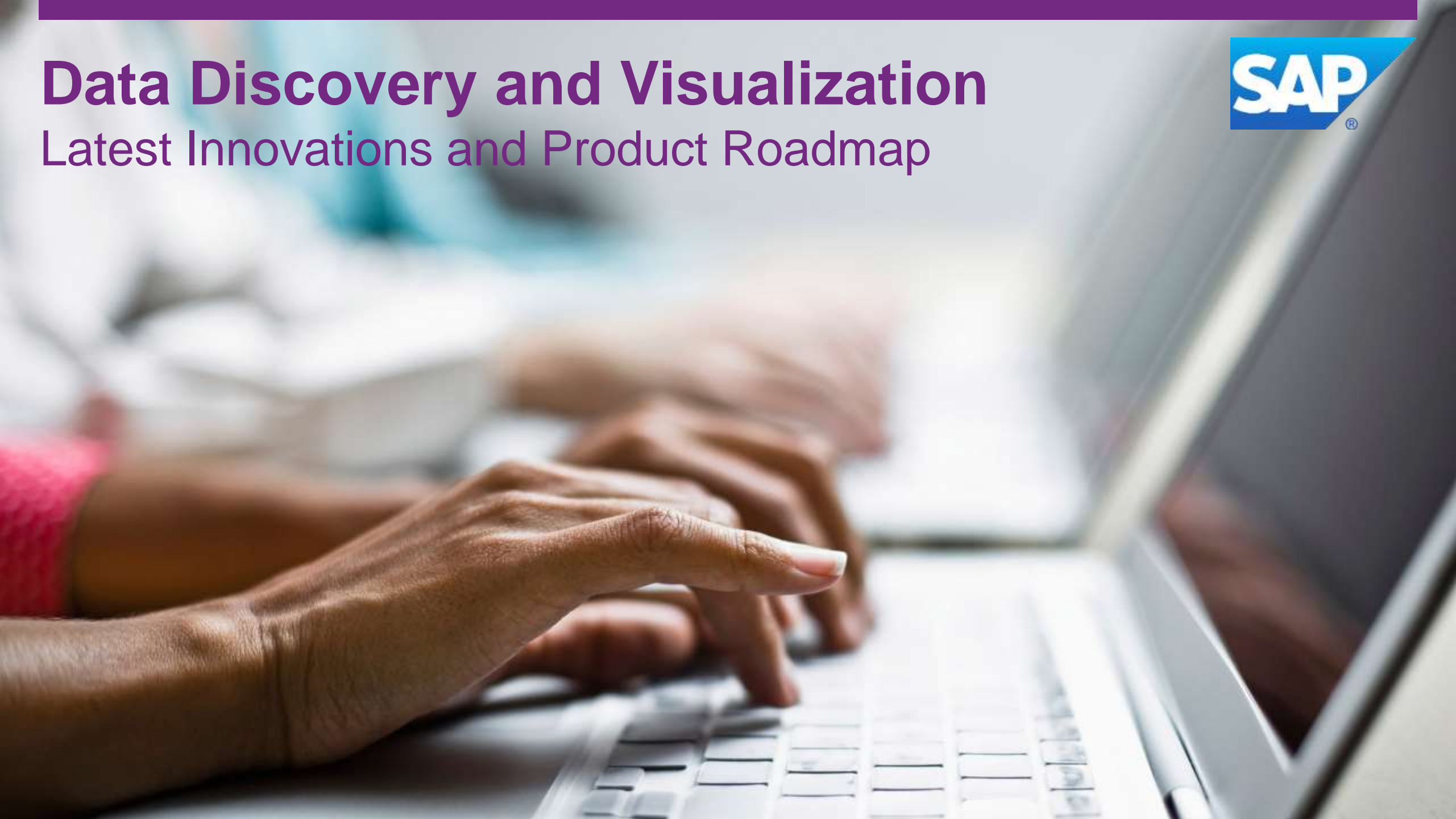
Simplify the landscape with use case convergence

See more details in Jayne Landry's [Run Simple: Convergence of the SAP BusinessObjects BI Product Portfolio](#) blog



Data Discovery and Visualization

Latest Innovations and Product Roadmap



SAP Lumira product roadmap

Agility

Essential features enabling business-user led analytics in the line of business

WITH

Trust

Bridging de-centralized analytics deployments with those centralized to better serve the enterprise

&

Big Data

Cost effective Data discovery on ALL data by leveraging Velocity in Memory Engine on Hadoop

Agility

Essential features
enabling business-user
led analytics in the line
of business

Formulas and Expressions

{Sales} for {country}.Canada

{Sales} / (SUM({Sales}) FOR [{Year}, {Quarter}]) AS {Ratio}

((Sales) - PREVIOUS().{Sales}) / PREVIOUS().{Sales} * 100
FOR {Year} FOR [{Quarter}, {Product}] AS {Growth}

{Sales} / (Product).PARENT().{Sales} AS {Fraction of Parent}
{Sales} / (Product).ROOT().{Sales} AS {Fraction of Total}

SAP Labs preview on 1 else IF ({Sales} <= 30) AS

Data Wrangling & Blending

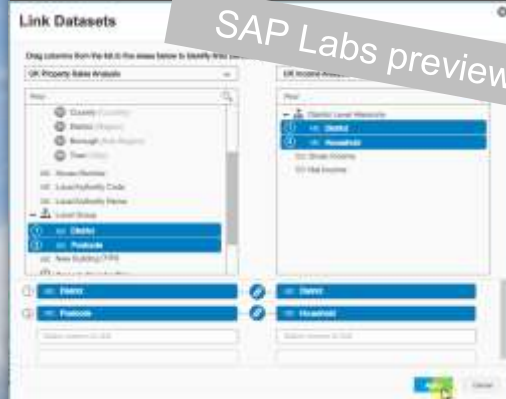


Chart Formatting and Customization

Custom Palette Exploration



Cross Tabs

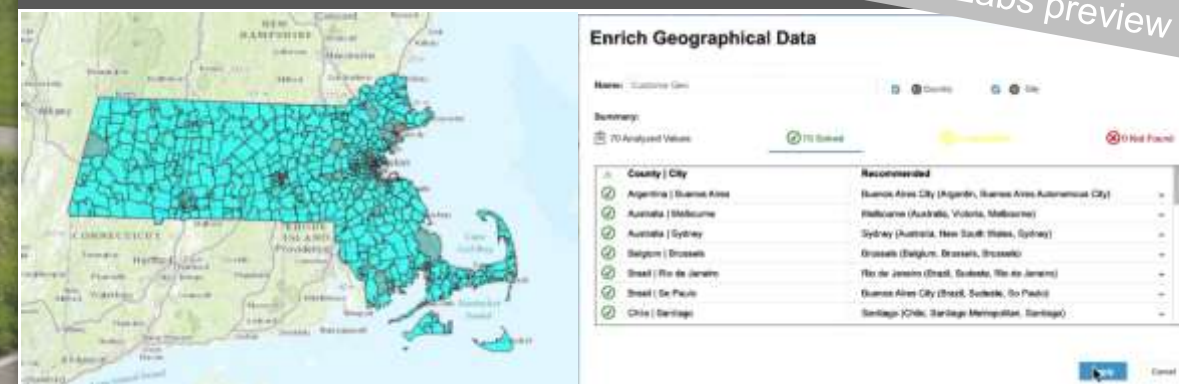
Cost and Revenue by Milk Type, Container Type

Container Type	Organic Milk		Regular Milk	
	Cost	Revenue	Cost	Revenue
Carton				
Glass				
Plastic				
Total	\$1,184,026.05	\$1,667,826.10	\$1,470,498.19	\$2,041,348.22

Cost and Revenue by Milk Type, Container Type

Container Type	Organic Milk		Regular Milk		Sum of Cost	Sum of Revenue
	Cost	Revenue	Cost	Revenue		
Carton	\$384,392.02	\$542,127.14	\$281,881.64	\$363,555.54	\$646,273.63	\$905,682.80
Glass	\$771,934.14	\$1,080,544.70	\$1,024,522.45	\$1,422,326.44	\$1,796,456.60	\$2,508,971.14
Plastic	\$27,599.89	\$39,054.28	\$184,084.09	\$255,456.12	\$211,793.98	\$294,510.38
Total	\$1,184,026.05	\$1,667,826.10	\$1,470,498.19	\$2,041,348.22	\$2,654,524.21	\$3,709,174.32

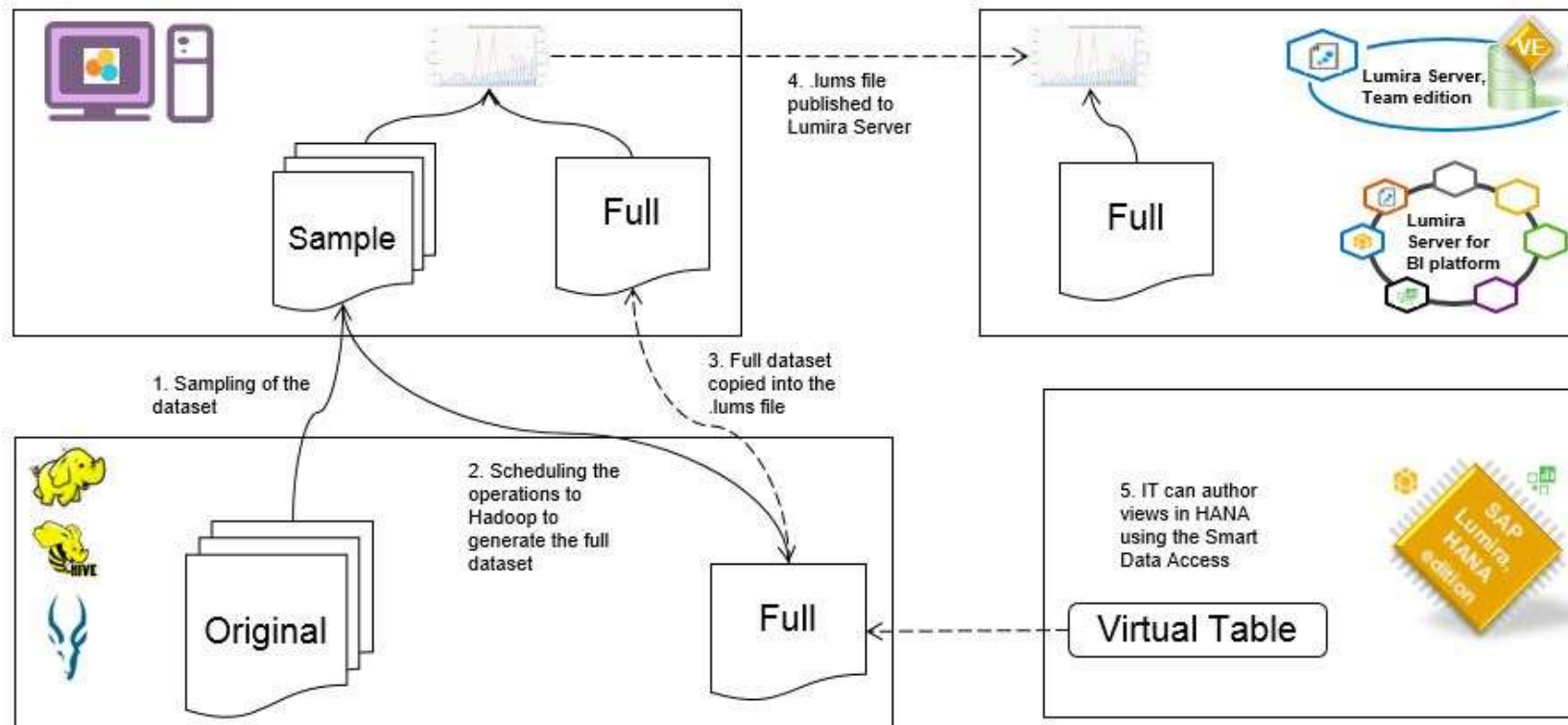
Location Analytics



Big Data

Cost effective Data discovery on ALL data by leveraging Velocity in Memory Engine on Hadoop

Data Wrangling on any data size in Hadoop



Demo: analyzing in Hadoop with SAP Lumira



**House Sales Prices
from 1995-2014 in UK**
20m rows

+



**Postcode Lookup
Table**
500k rows

+



UK Census 2011
250k rows

**Which social category in the UK was most
impacted by the increase of house prices over
the past 20 years?**

Enterprise Business Intelligence

Latest Innovations and Product Roadmap



Enterprise BI

What are we hearing from customers?



Engage the business with better content, more collaboration and agility.

[Design Studio](#) | [Analysis for Office](#) | [Web Intelligence & Crystal Reports](#) | [Mobile BI](#)



Simplify the BI platform to allow you to support more users and data.

[BI Platform](#) | [Semantic Layer](#)

Engage the business

SAP BusinessObjects Design Studio 1.5



Performance

- Query parallelization
- Unmerge variables
- Caching and rendering performance

New and Improved Components

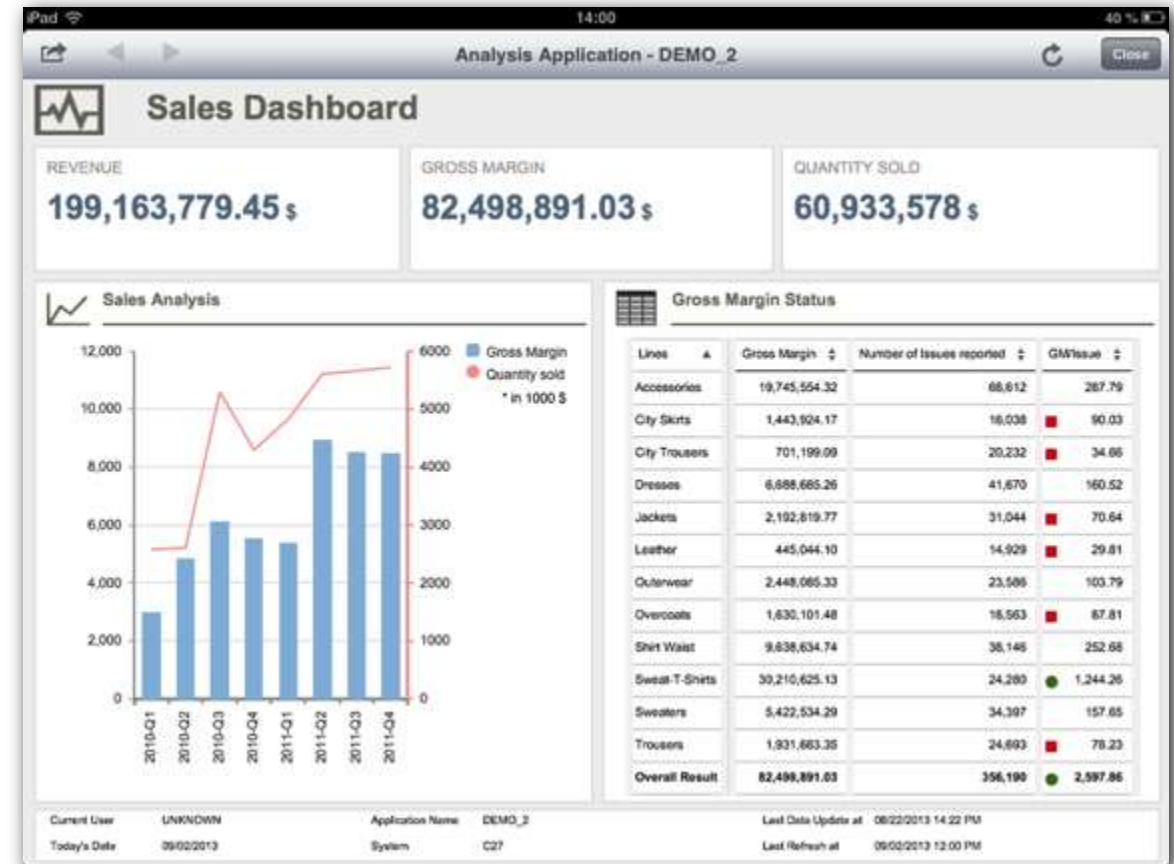
- Geo maps (baseline)
- Navigation panel
- Horizontal filter bar
- Crosstab: multi-selection
- Charts: more scripting options, chart type selection component

App Building Features

- Export data to SAP Lumira
- Export to pdf / printing
- Shared fragments
- Universe support: all relational databases
- Data-bound component properties
- Context menu: Custom entries, back to start

Management and Deployment

- LCM of bookmarks (e.g. bulk deletion)
- Multi-language support on BIP



Engage the business

SAP BusinessObjects Design Studio – Future plans



Xcelsius/Dashboards Convergence

- Improved UNIX support
- New Visual Components
- Calculations

Continuous Improvements

- Geo maps enhancements
- Charting enhancements
- PDF export enhancements
- Crosstab drag-and-drop

Mobile Enablement

- Improved performance
- Improved offline support



Engage the business

SAP BusinessObjects Analysis, edition for MS Office 2.x



		Billing order value		Billing value		Returns value		Credit memo value	
		EUR	USD	EUR	USD	EUR	USD	EUR	USD
Division P	High Tech 2	1200	Reiser Berlin	62.088.864,96	66.373.292,48	4.744.756,56	2.781.330,00		
		1270	Reiser Distribution	53.888.800,00	46.783.200,00	3.524.400,00	1.783.400,00		
		1300	Cedex GmbH	8.954.745,76	8.949.777,60	788.530,36	782.850,00		
Division Q	High Tech 3	0900	Conrad Clear	44.348.640,00	37.484.488,00	975.896,80	783.044,00		
		0906	COMPTON Tech AG	48.739.240,00	44.899.208,00	8.786.880,00	3.989.400,00		
		1200	Cellular Industries	35.952.339,38	34.983.237,60	3.292.873,00	2.434.203,36		
		1300	Henderson Inc.	65.988.800,00	66.943.840,00	1.733.400,00	1.278.800,00		
		1306	HTG Components	2.061.800,00	2.400.800,00	182.800,00	182.800,00		
		1307	Lamson Metal Center	37.187.487,44	36.733.113,60	2.657.787,20	2.857.787,20		
		1308	Mobile North Sales Ltd.	22.626.240,00	23.840.800,00	3.078.400,00	888.800,00		
		1310	Star Supermarkets	107.734.400,00	136.160.800,00	1.536.800,00	1.536.800,00		
		1400	Summitplus	21.758.446,72	26.886.915,84	3.885.584,24	3.885.584,24		
		1510	Central Inc.	68.558.720,00	87.260.624,00	9.244.283,20	9.244.283,20		
			Result	738.547.490,16	718.340.587,20	38.833.495,36	38.430.588,80		
Division R	High Tech 3	1200	Adelson SA	66.783.840,00	78.524.800,00	724.160,00	340.400,00		
		1203	Reiser AG	127.684.475,92	124.436.116,16	1.213.383,84	666.300,00		
		1280	Reiser Berlin	3.285.881,80	3.221.137,28	286.821,76	286.821,76		
		1300	Woodree Inc.	65.078.800,00	66.742.872,00	7.192.844,00	7.192.844,00		
		1370	Reiser Distribution	128.786.800,00	124.443.800,00	12.143.280,00	4.570.280,00		
		1380	Cedex GmbH	46.723.280,34	46.443.103,36	2.004.253,32	1.823.461,32		
Division T	High Tech 3	1200	Computer 2000	44.078.480,00	42.128.800,00	6.340.960,00	3.128.800,00		
		1310	Industrial Industries	47.797.712,00	46.987.672,48	6.672.716,80	1.476.892,80		



Simplification

- Common client for Analysis Office (2.1) and EPM Add-In
- Single Installer
- Common Refresh

UI Enhancements

- Table Design and Formatting
- Formula Editor for BW and HANA
- Enhanced Design Panel

Platform integration

- Improved scheduling and precalculation
- New HANA connectivity (http/https based)
- System remapping
- New APIs

Engage the business

SAP BusinessObjects Analysis, edition for MS Office – Future plans



Simplification

Further integration
between Analysis and
EPM add-in

- Ribbon configuration
- UI harmonization

Improved Interface and Visualizations

- More flexibility and formatting options for the crosstab
- Improved PowerPoint integration

Interoperability and Integration

- Improved interoperability with Design Studio and Lumira
- Improved scheduling support with BI platform
- Publish workbooks to HANA platform

Engage the business

SAP BusinessObjects Web Intelligence 4.1 SP6



Free-hand SQL

- Create a WebI data provider and type SQL directly
- Requires a secured connection
- Convert Deskl doc with FHSQL to WebI with RCT

Global input controls

- Now input controls can apply to all the tabs in the document

BI variants

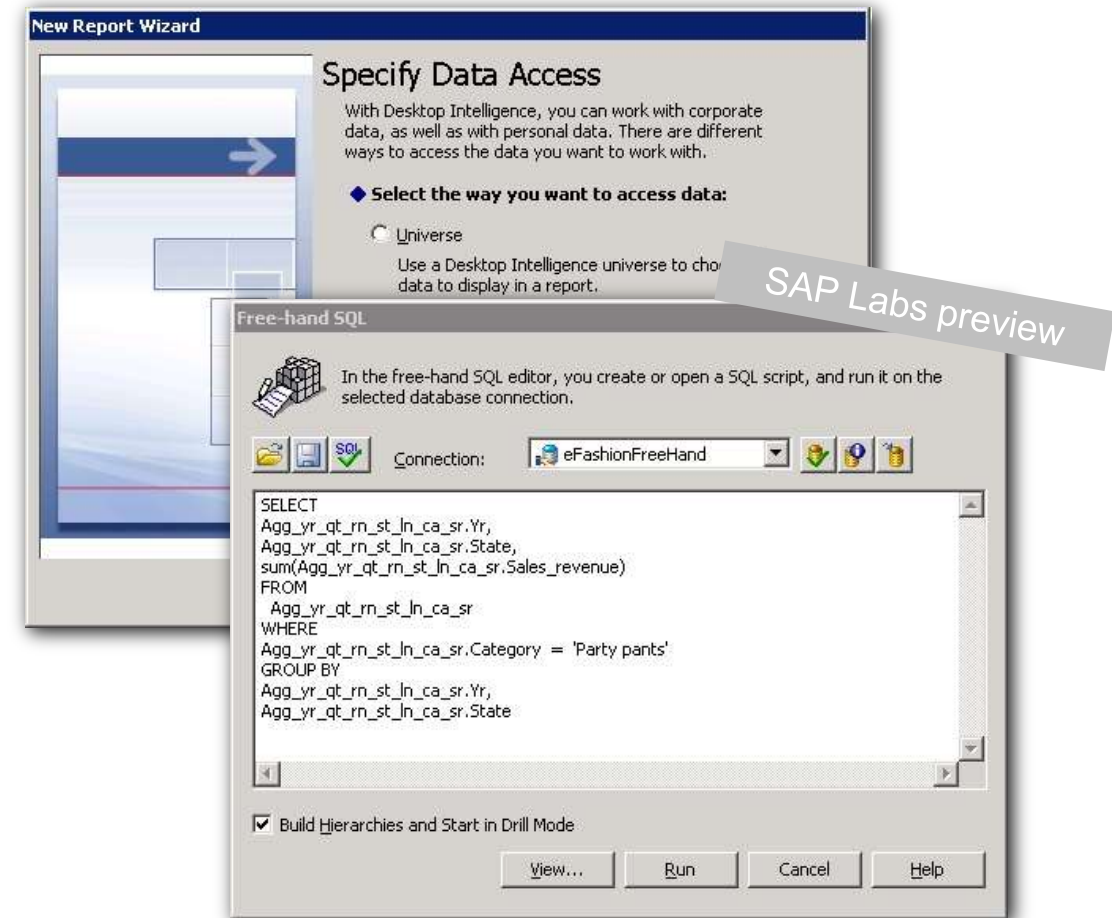
- Answer multiple prompts with a single click.
- Similar to BW variants, but can be applied to any data source

Multi-column selection with Shift-Click

- Shift click to select multiple columns or rows in a WebI table

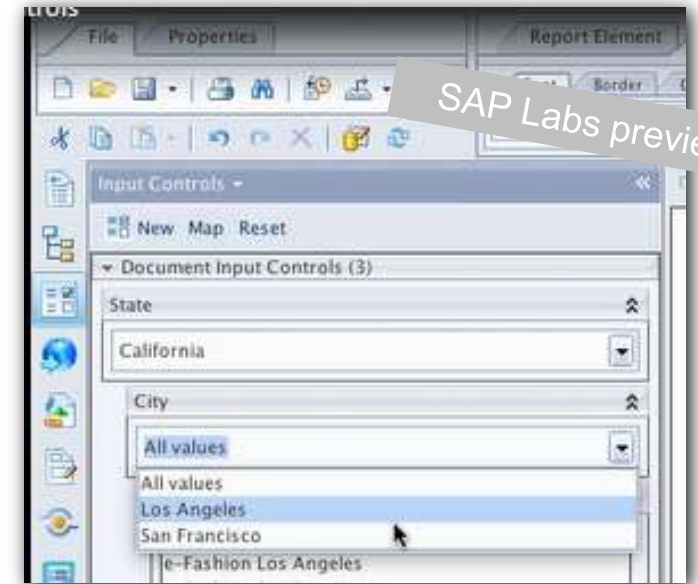
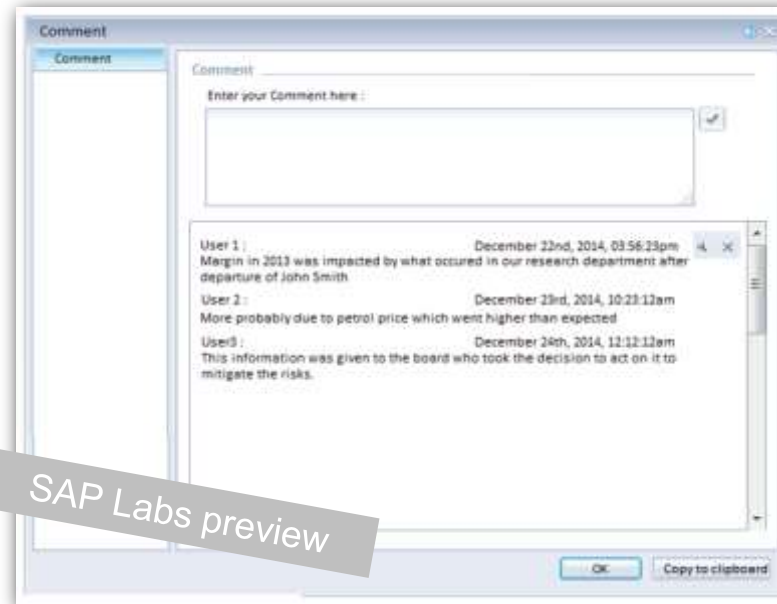
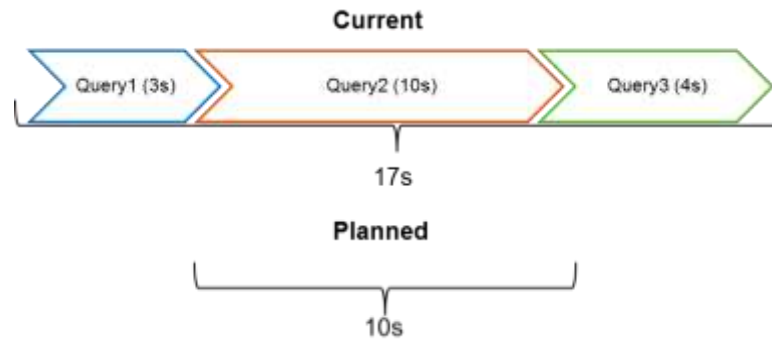
Dynamic default values in universe prompts

- Default values in universe prompts can have dynamic values. For example, default date = today's date



Engage the business

SAP BusinessObjects Web Intelligence – Future plans



- Faster report development through shared WebI objects
- Easier reporting on SAP HANA

- Collaboration with annotations
- Global and cascading input controls
- Parallel queries

Engage the business

SAP BusinessObjects Mobile – Future plans



Content Support

- Lumira - mobile optimized consumption experience with gesture support
- Support lumira on android and iOS handheld devices
- Offline support for lumira content
- PDF support
- User experience enhancements
- Android catchup features with iOS
- Performance enhancements to dashboards on mobile (Xcelcius)

Platform services

- Support Lumira Edge Server
- Support for Lumira Edge Add-on for BI
- SAML support with trusted authentication
- Personalize home screen by choosing default landing category
- Auto download of documents after first login from user
- Touch ID integration

Simplify the BI platform

SAP BusinessObjects BI platform 4.1 SP6



Security Enhancements

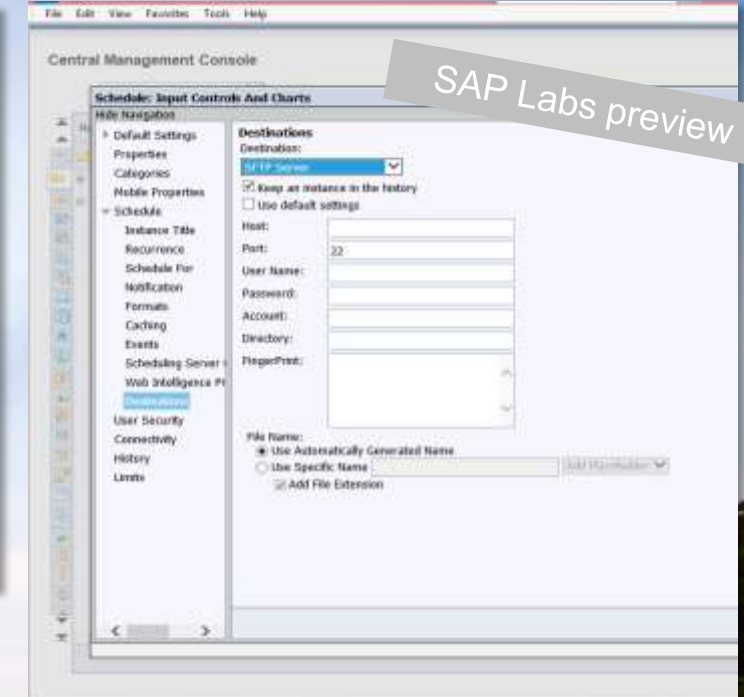
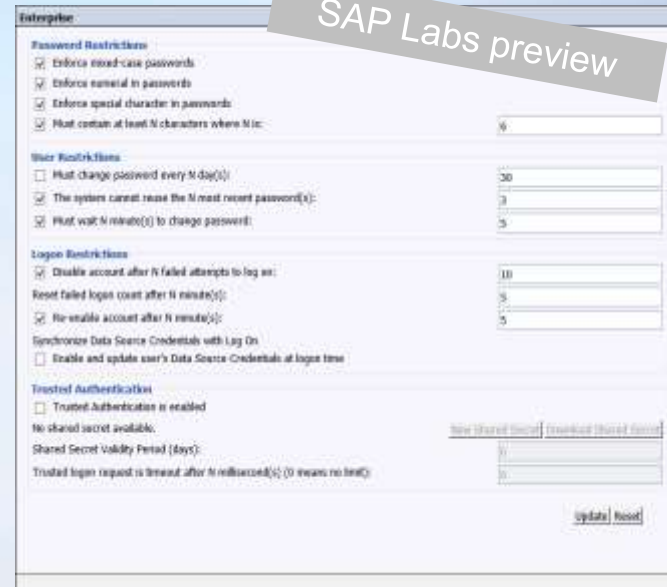
- Enhanced password policy
- SSO enabled for CMC
- Secure FTP support for Scheduling and Publications
- Configure SSL while using SMTP as a destination

Session Management Improvements

- Session closed on close for Launchpad, Opendoc and CMC
- Seamless BI Launchpad failover on clustered web tier environments

New platform support

- Microsoft Azure
- Safari 8
- Tomcat 8
- Application server - NW 7.4 SP09



Simplify the BI platform

SAP BusinessObjects BI platform 4.x – Future plans

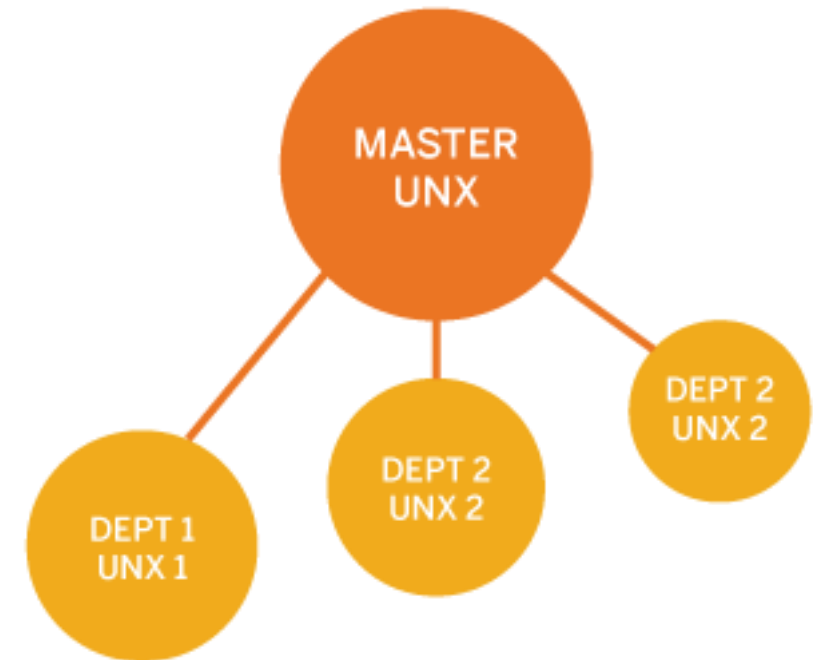


Simplification for IT

- Continued focus on quality, improving lifecycle management and upgrade manager performance.
- BW improvements, such as Universe authoring on Bex Queries.
- Simplified upgrades via the Report Comparison Tool.
- Improved patching and reduced downtime during upgrades.
- Commentary as a platform service
- Trusted Data discovery (Lumira Server for BIP add-on)
- Auditing and Publication improvements

Extensibility for IT & Partners

- New extensions API for visualizations and data providers.
- Support for new data sources and platforms.
- Reuse and modularity through Linked UNX Universes.
- New data sources (Apache Spark, SFDC)
- Enhanced Rest SDK



Enterprise BI

What are we hearing from customers?



Engage the business with better content, more collaboration and agility.

[Design Studio](#) | [Analysis for Office](#) | [Web Intelligence & Crystal Reports](#) | [Mobile BI](#)



Simplify the BI platform to allow you to support more users and data.

[BI Platform](#) | [Semantic Layer](#)

Data Center Management

Introducing SAP IT Operations Analytics



SAP IT Operations Analytics

Managing complex data centers today

Business Models

hybrid deployment models

24x7 business

> **72,267** end users

> **70** countries,

> **220** subsidiaries

Number of events daily



558m

Average number of Monitoring Tools

7



IT Infrastructure

> **8500** SAP systems

> **72,267** end users

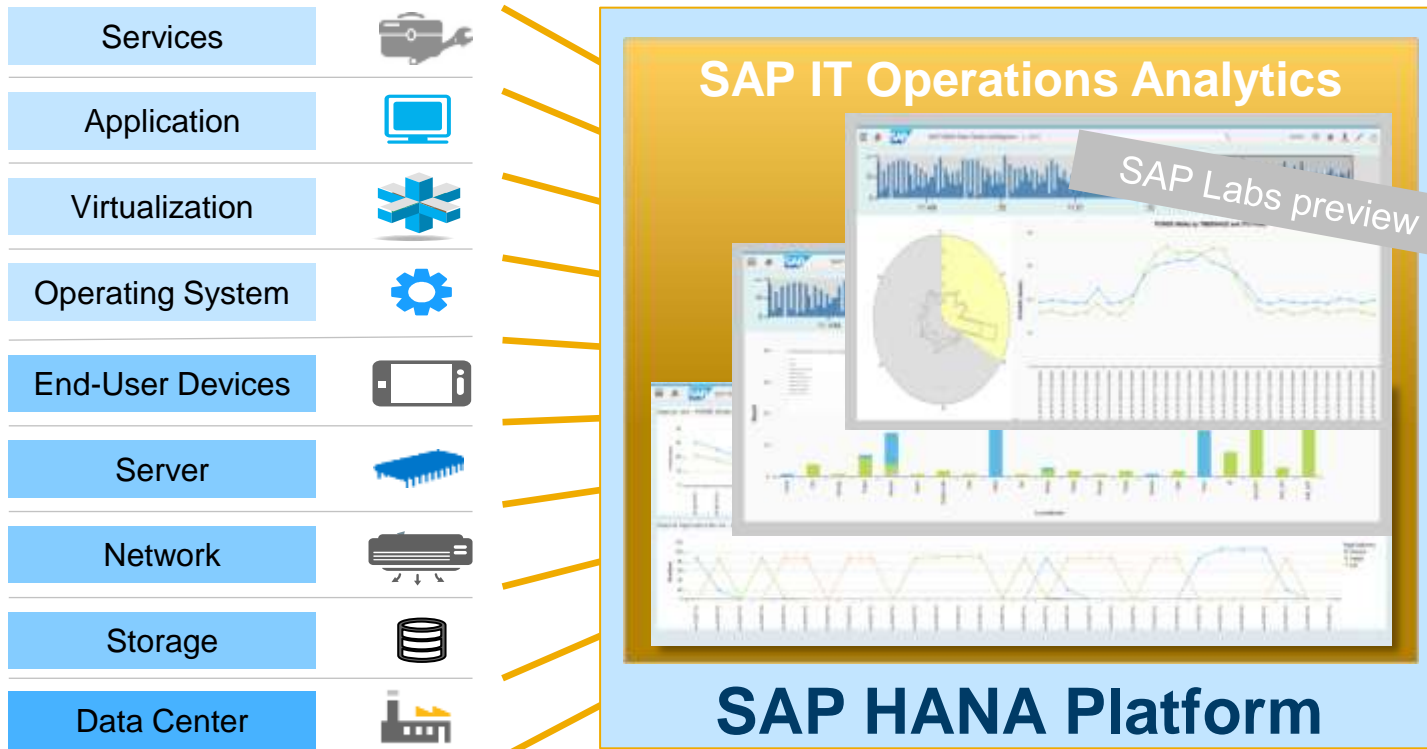
> **90,000** PCs & laptops

> **17,000** network devices, switches, ...

> **52,000** mobile devices (including BYOD)

SAP IT Operations Analytics

New analytics product to be launched in June 2015



- HOLISTIC – view across data center
- REAL-TIME – see events as they occur
- PREDICT – prevent outages before they happen

#askSAP Your Questions



Online resources

- ✓ Watch SAP Analytics Customer Stories – www.SAPAnalyticsStory.com
- ✓ Download the Statement of Direction for SAP BI Solutions – http://spr.ly/BI_SOD
- ✓ Browse BI 4.1 Customer Success Resources – www.sapbi.com
- ✓ Learn Everything About Lumira & Try the Standard Edition Free – www.saplumira.com
- ✓ Use Lumira, Cloud Edition Free – cloud.saplumira.com/landing-page.jsp
- ✓ Connect with community experts
 - BI 4.1 – scn.sap.com/community/business-intelligence
 - Lumira – scn.sap.com/community/lumira

DATAGENIUS IV

Join the Challenge June 15!

<https://ideas.sap.com/DataGenius>

