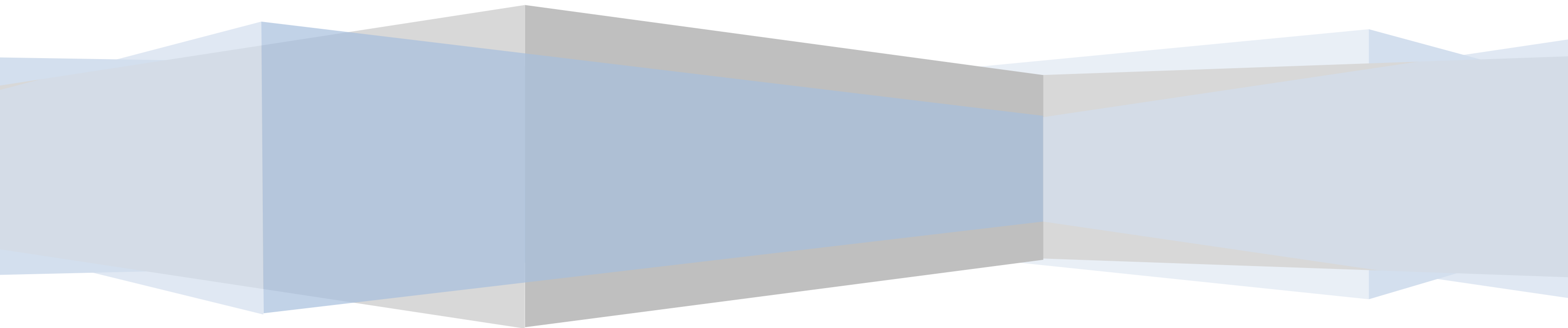


Comparative Study of the Features of SAP BO 3.1 and BO 4.0

Query Features

Pooja Choubey

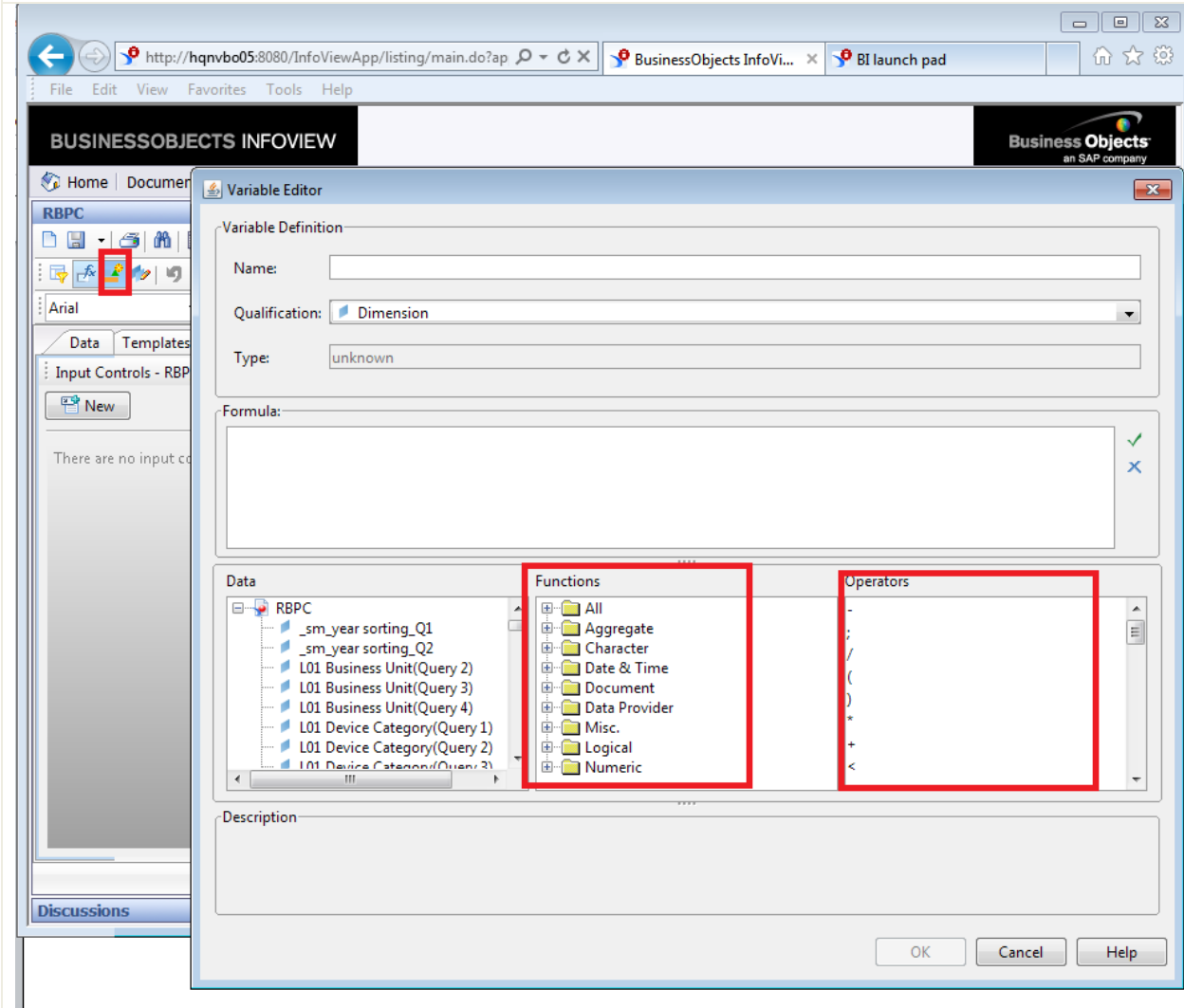


Interface as seen in BusinessObjects XI 3.1

Adding Variables/Formulas

Custom variables or formulas can be created using the Variable Editor .

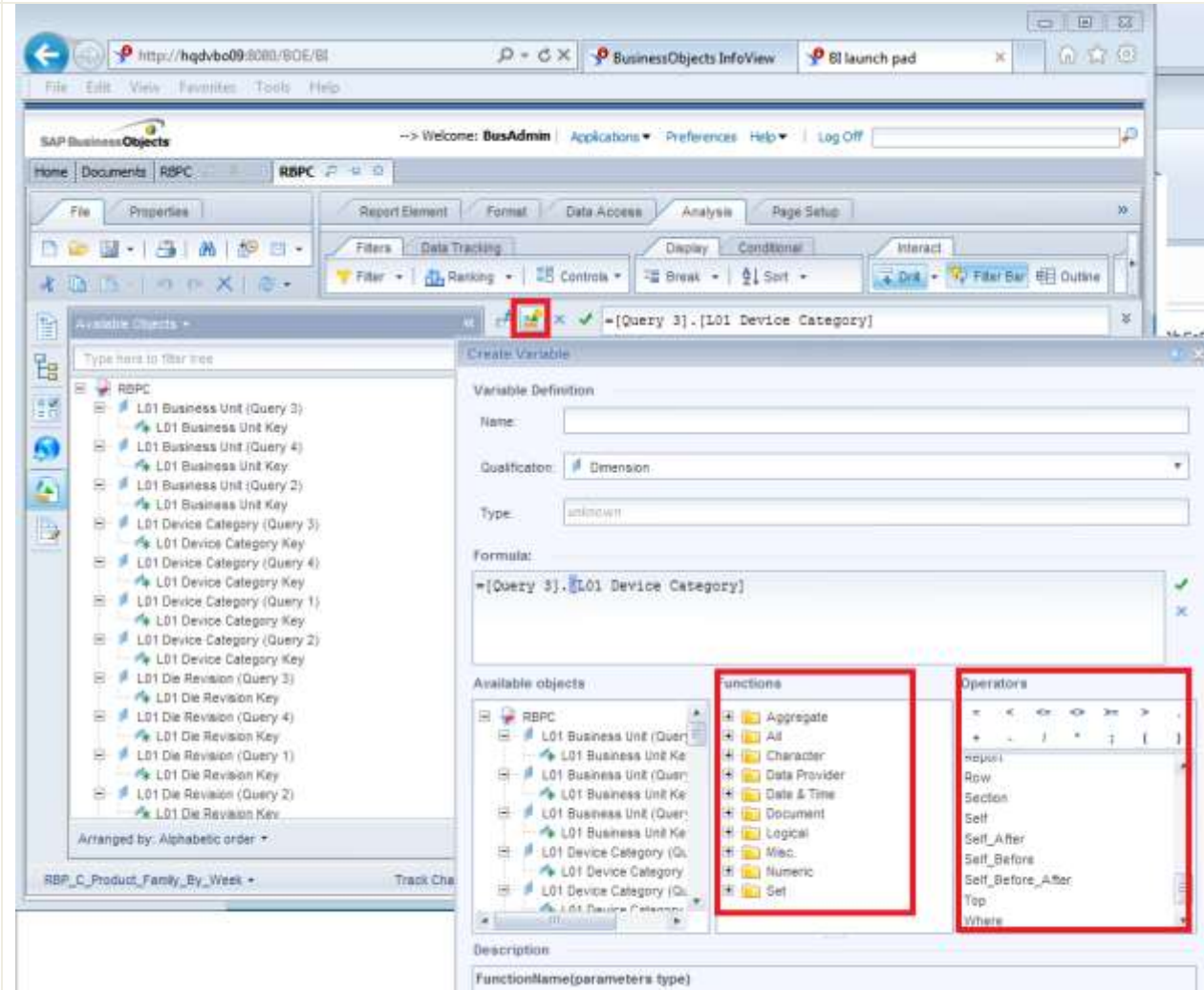
Predefined functions and operators can be used to create the formulas.



Interface as seen in Business Objects BI 4.0

Adding Variables/Formulas

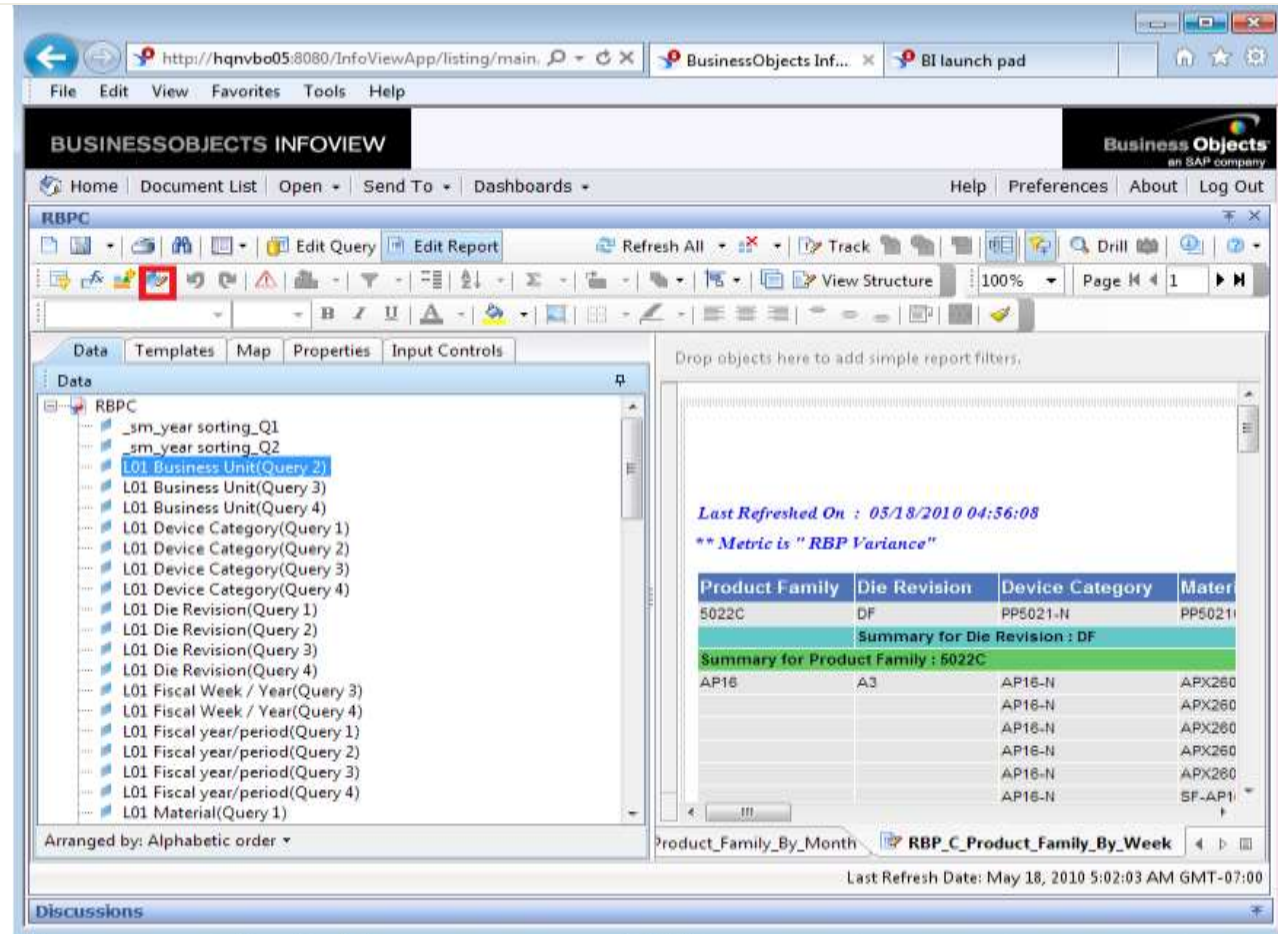
The functions library has been enhanced and new operators also have been introduced as shown below.



Interface as seen in BusinessObjects XI 3.1

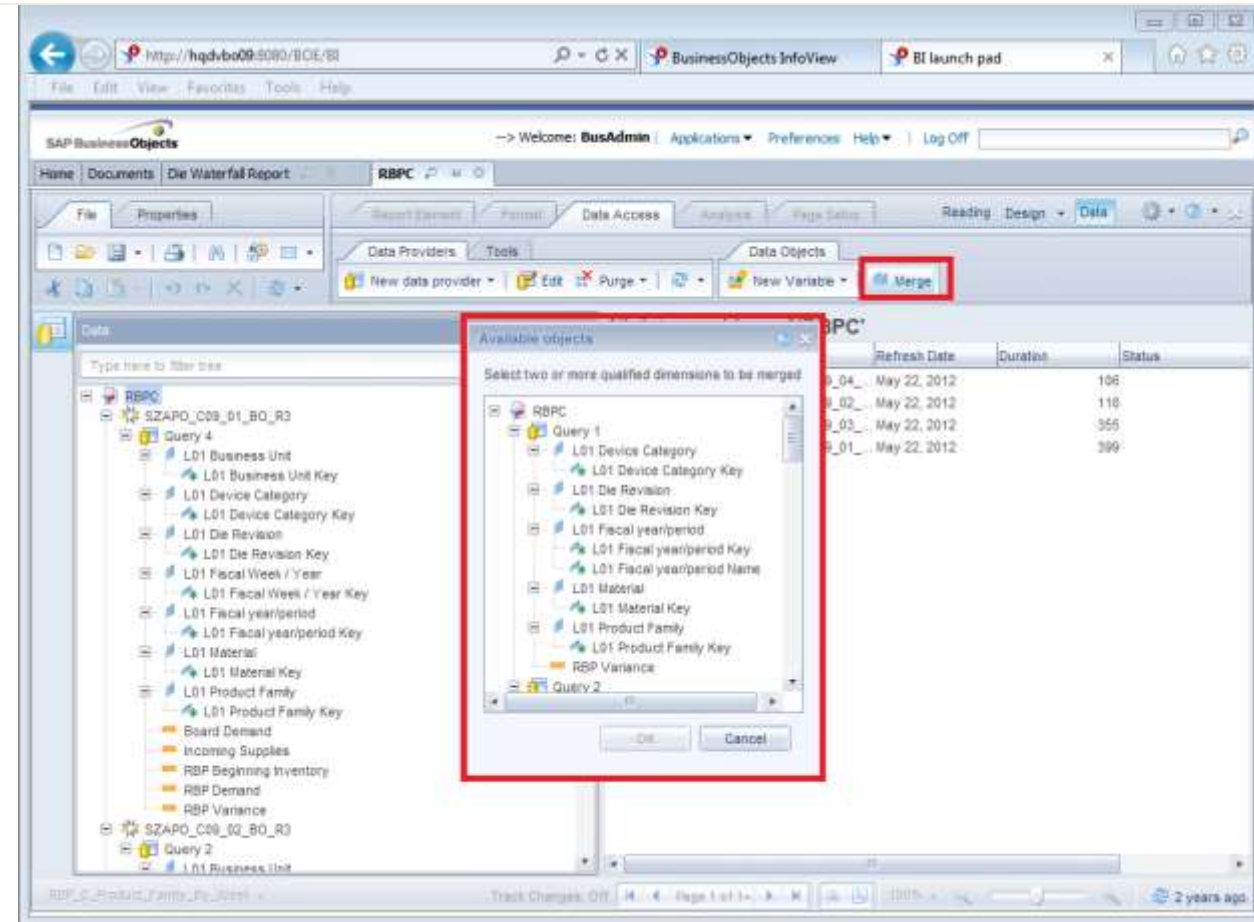
Merging the Dimensions

The existing dimension objects can be merged using the blue icon in the Edit Report menu as shown below.



Interface as seen in Business Objects BI 4.0

The dimensions can be merged using the Merge option provided in the Data Access > Merge as shown below:

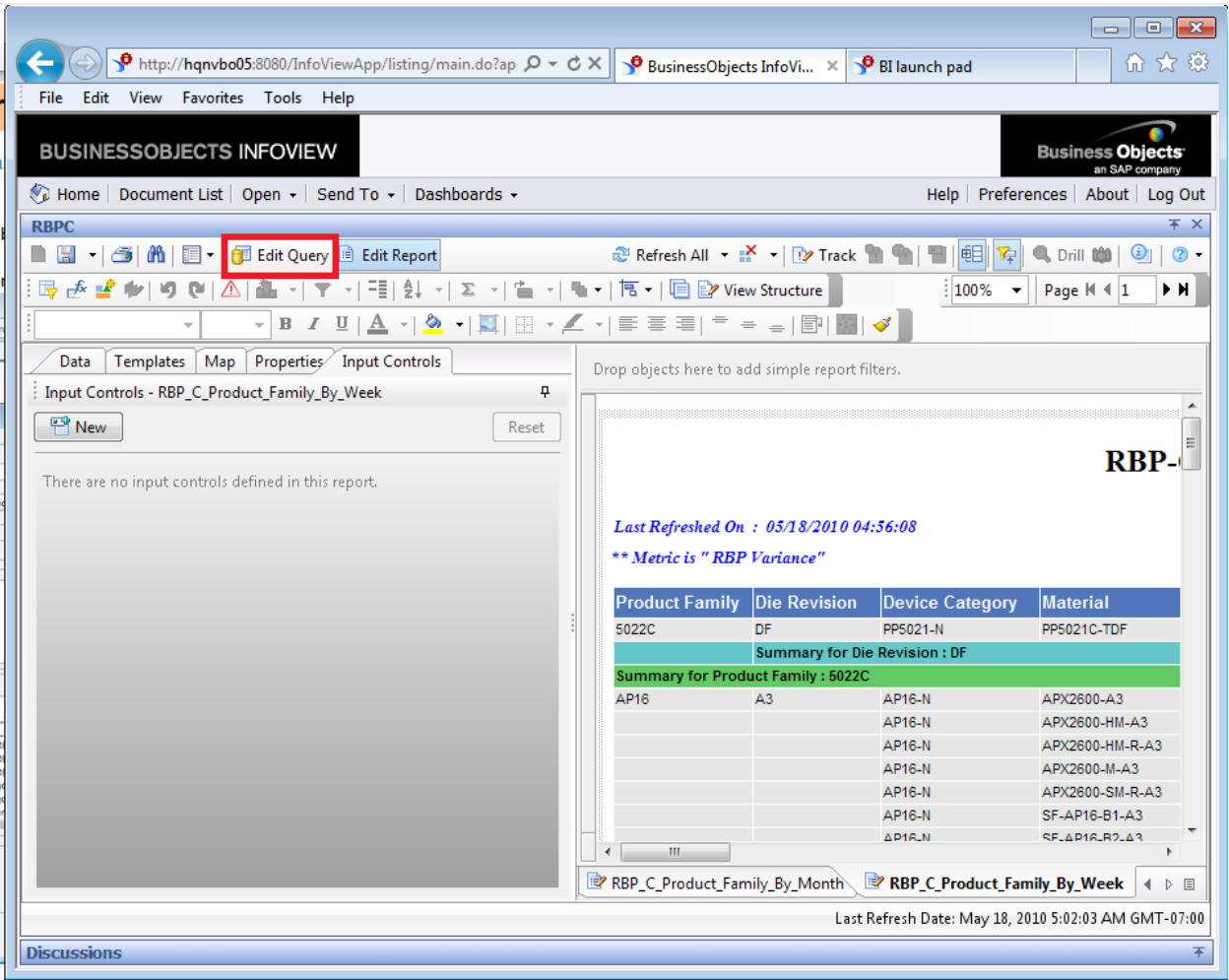


Interface as seen in BusinessObjects XI 3.1

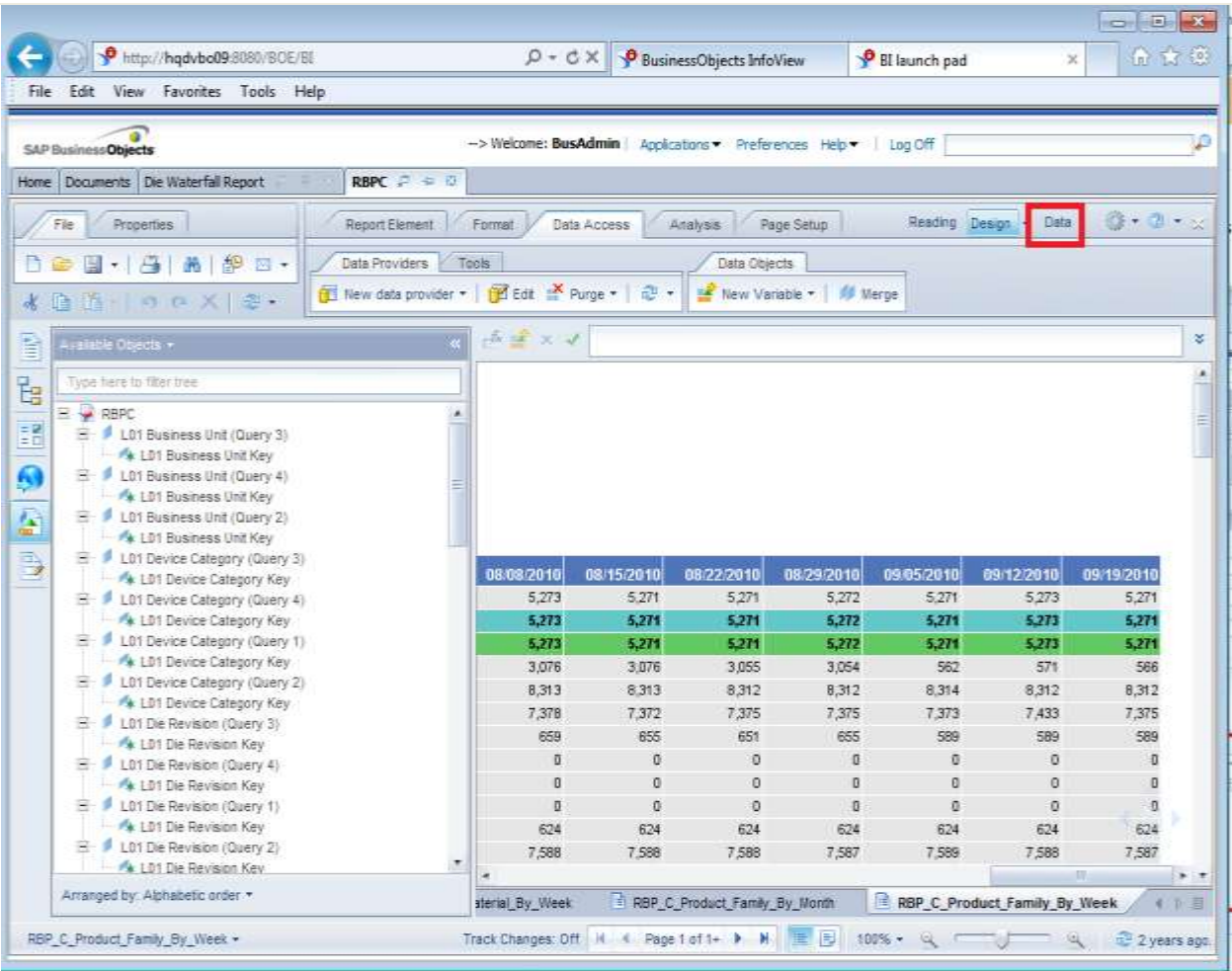
Interface as seen in Business Objects BI 4.0

Editing the Queries

Existing queries can be modified using the Edit Query option as shown below.



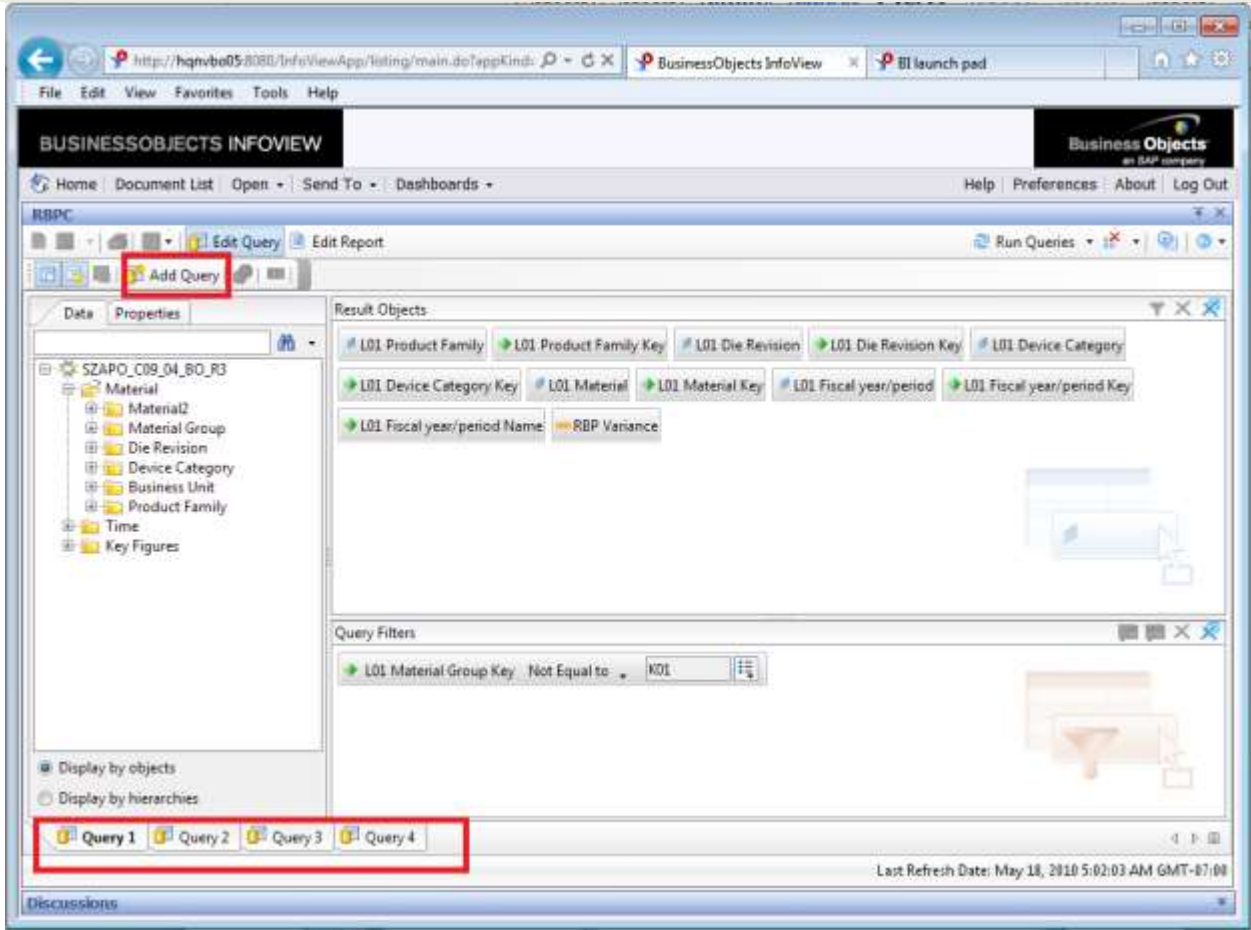
Queries can be viewed and modified using the Data pane as shown below



Interface as seen in BusinessObjects XI 3.1

Adding New Queries

Existing queries can be modified by clicking the queries at the bottom .New queries can be added using the Add Query option.

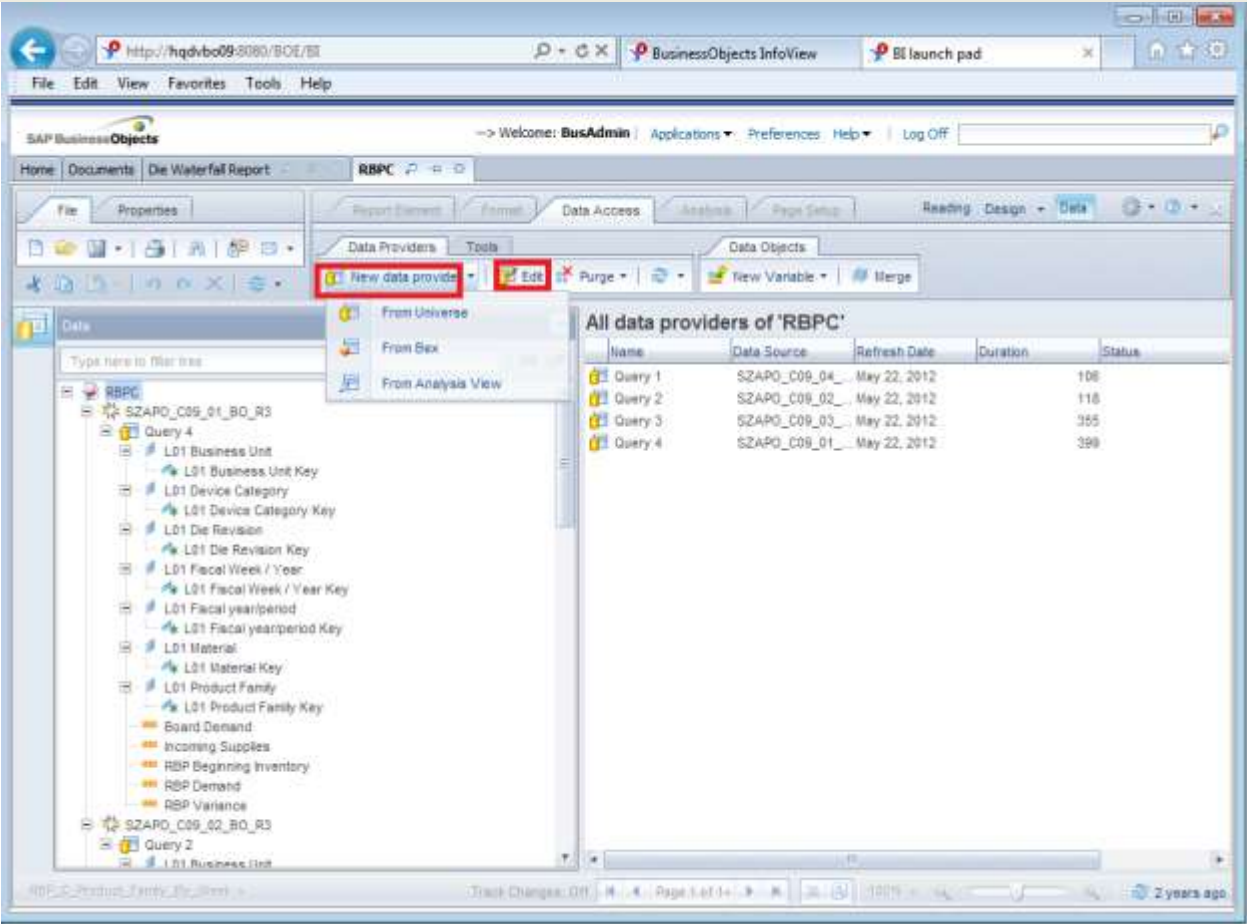


Interface as seen in Business Objects BI 4.0

Adding New Queries

All the queries used in the report are listed. Queries can be edited by selecting the query and clicking on Edit as shown.

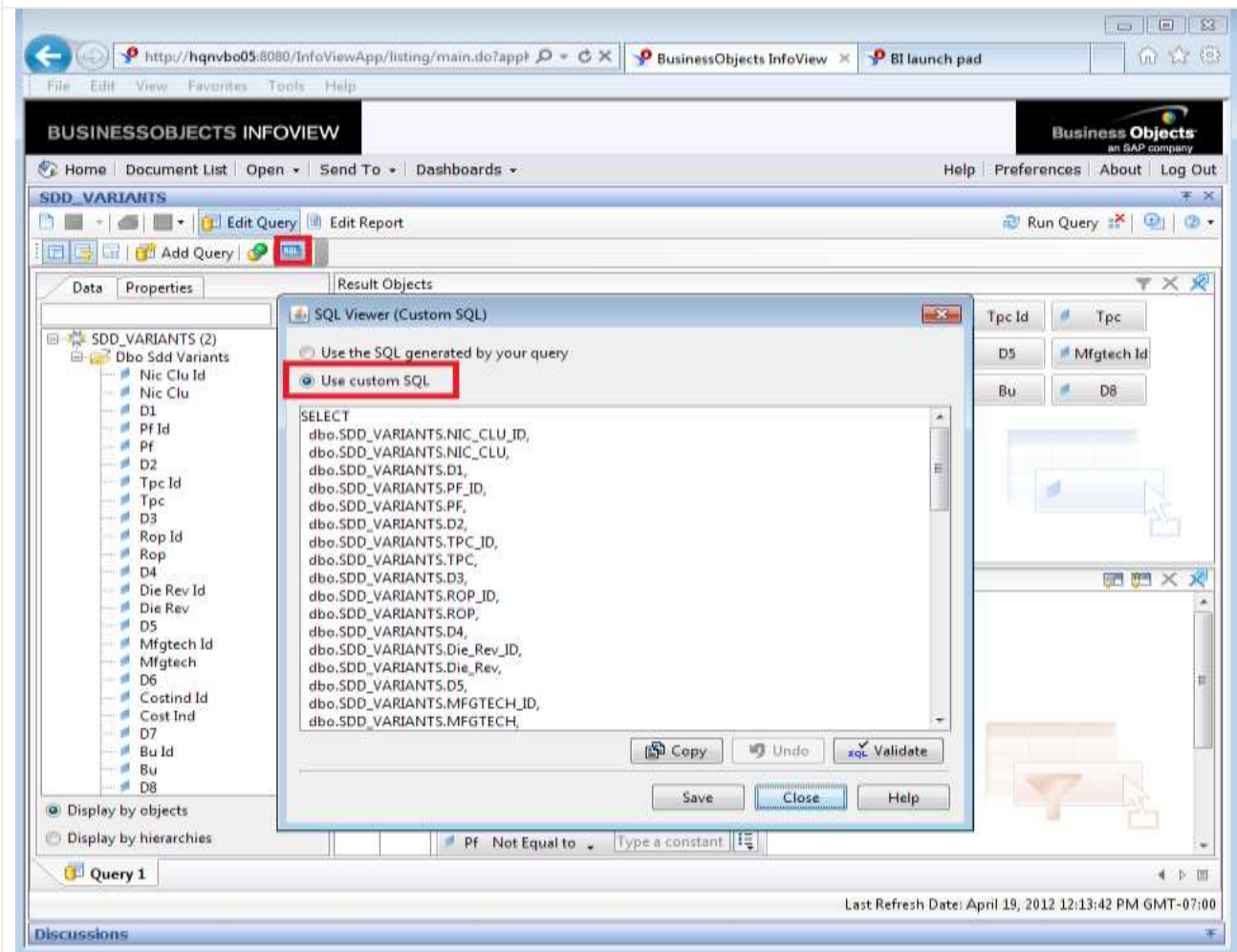
New queries can be added using the option New Data Provider and then selecting the source of data as depicted below.



Interface as seen in BusinessObjects XI 3.1

View SQL/Edit SQL

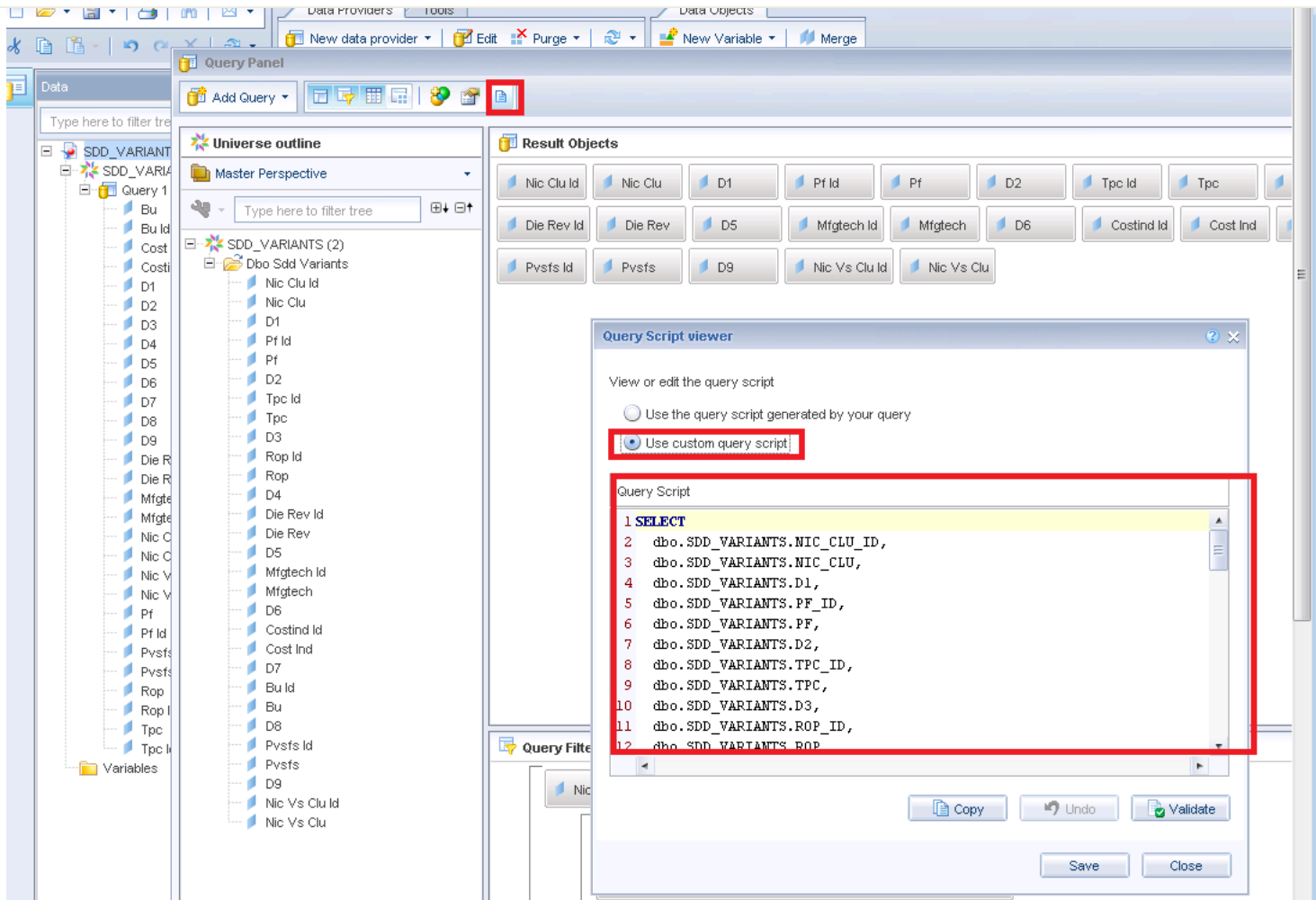
The SQL generated for the report can be seen and customised using the SQL option as shown below:



Interface as seen in Business Objects BI 4.0

View SQL/Edit SQL

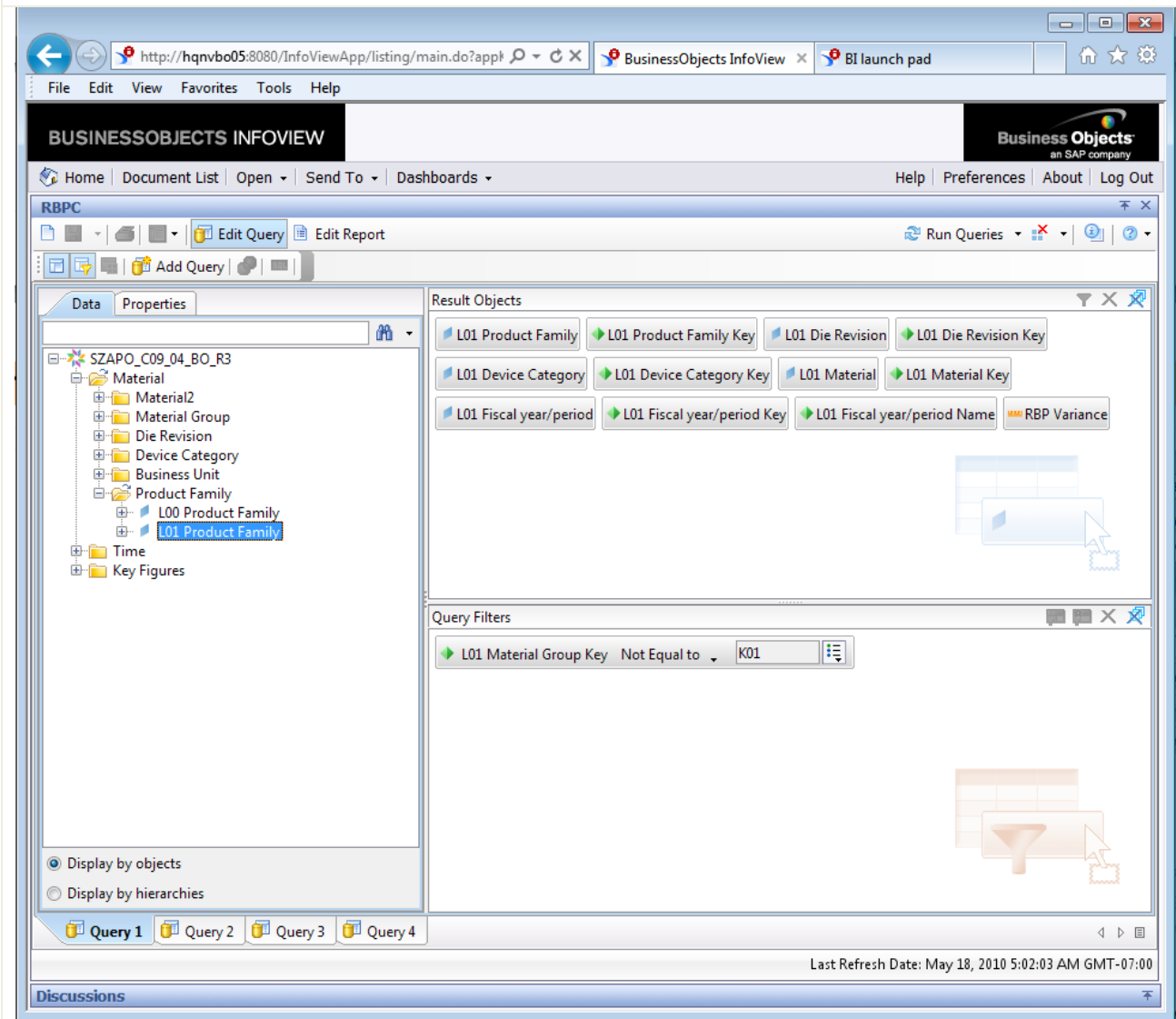
The SQL can be edited as shown below. The query script generated is more customized and easier to edit.



Interface as seen in BusinessObjects XI 3.1

Query Panel

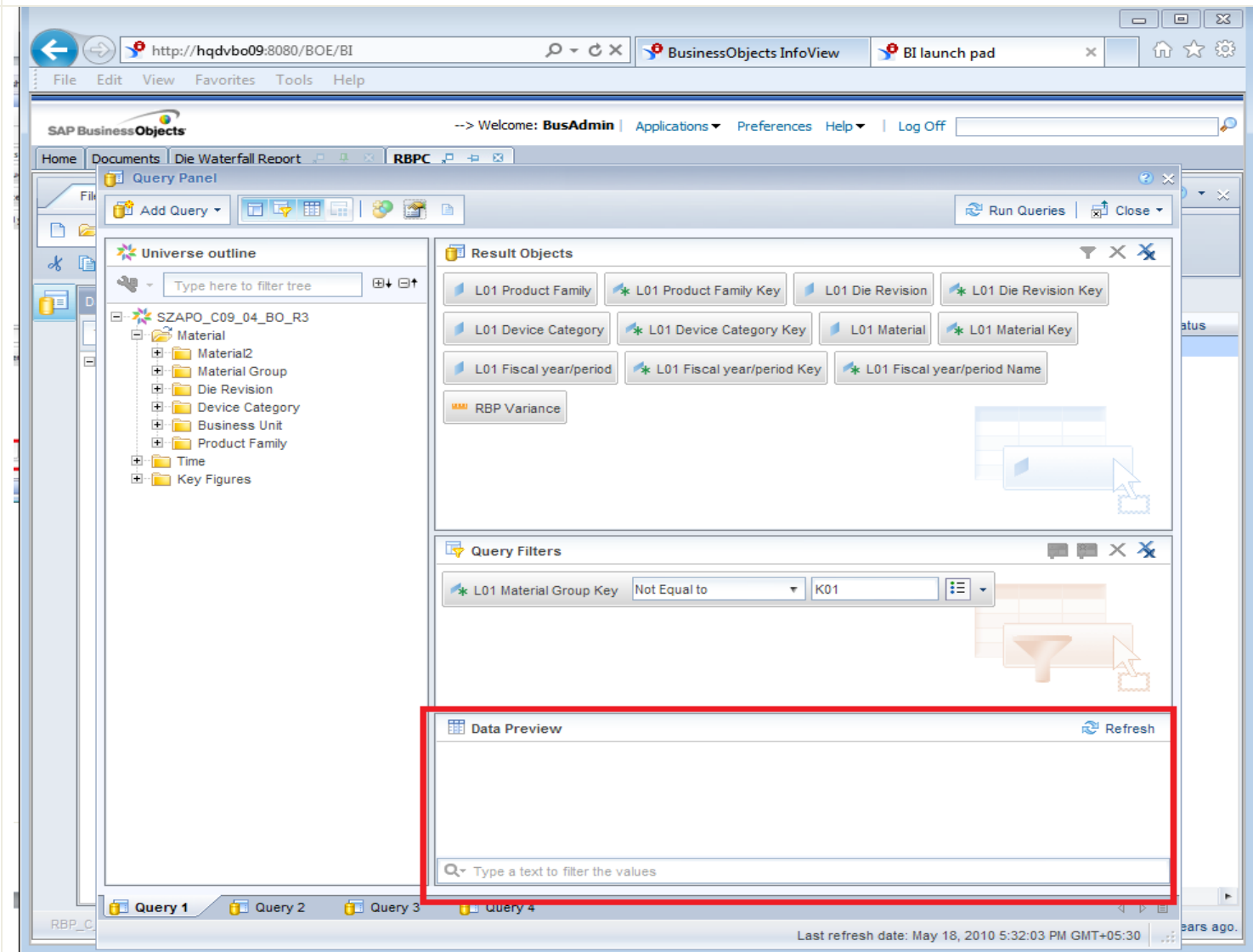
The Query Panel has the Result Objects pane and Query Filters pane as shown below:



Interface as seen in Business Objects BI 4.0

Query Panel

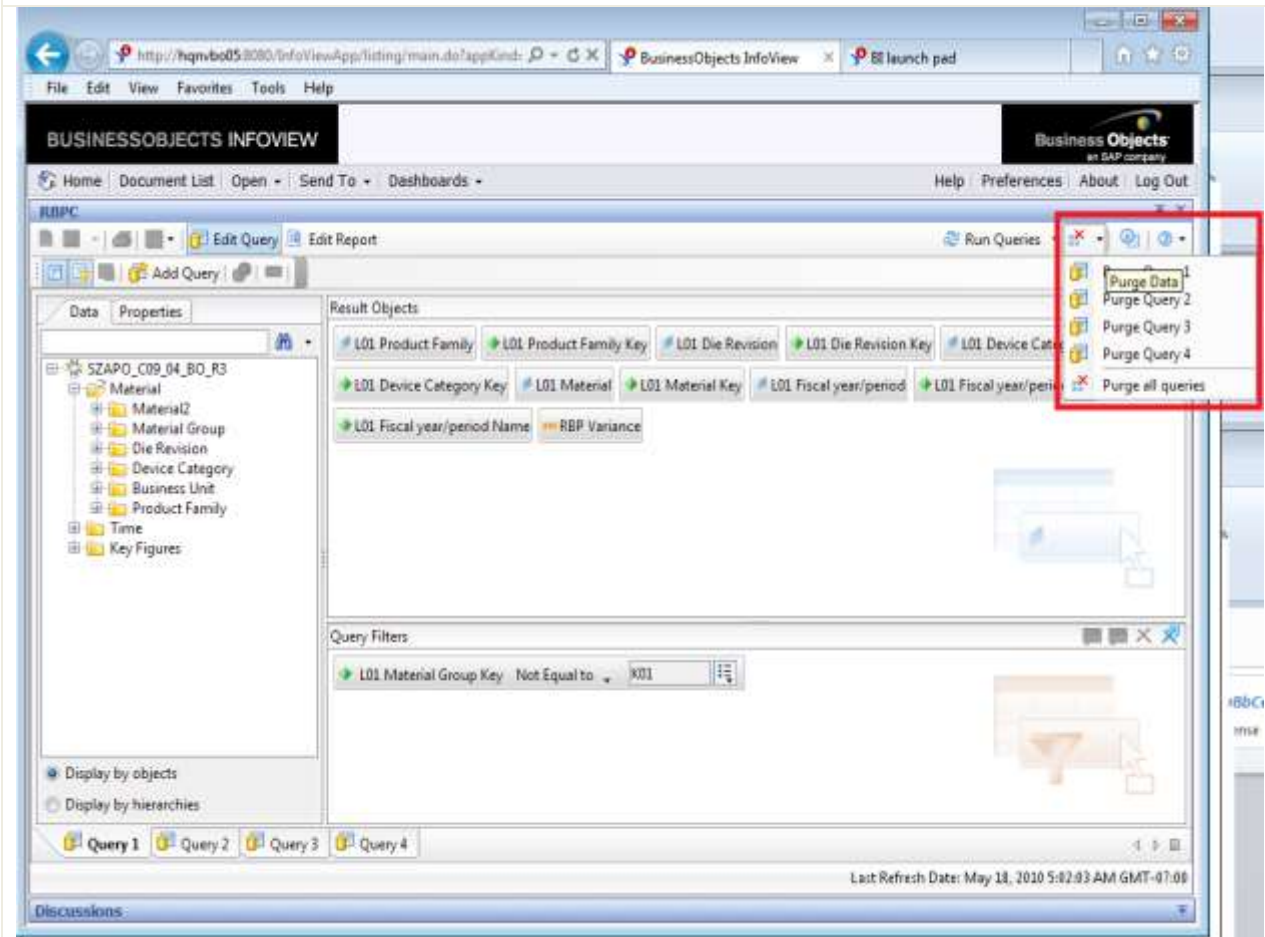
The Query Panel has Result Objects, Query Filter and Data Preview panes. The Data Preview gives a snapshot of the data being fetched by the query.



Interface as seen in BusinessObjects XI 3.1

Purging the Data

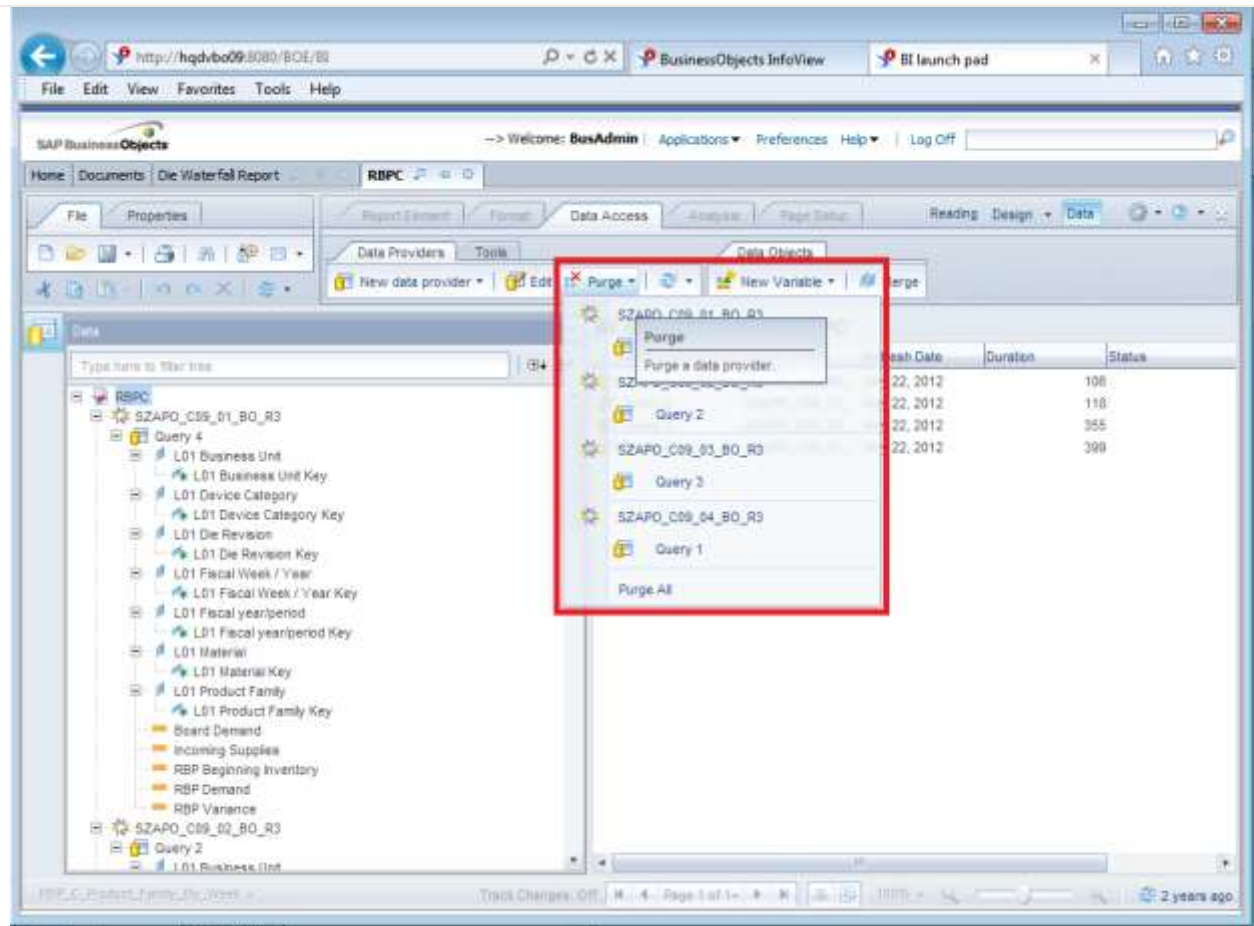
All queries or selected queries can be purged using the icon provided at the extreme right of the Query Panel as shown below:



Interface as seen in Business Objects BI 4.0

Purging the Data

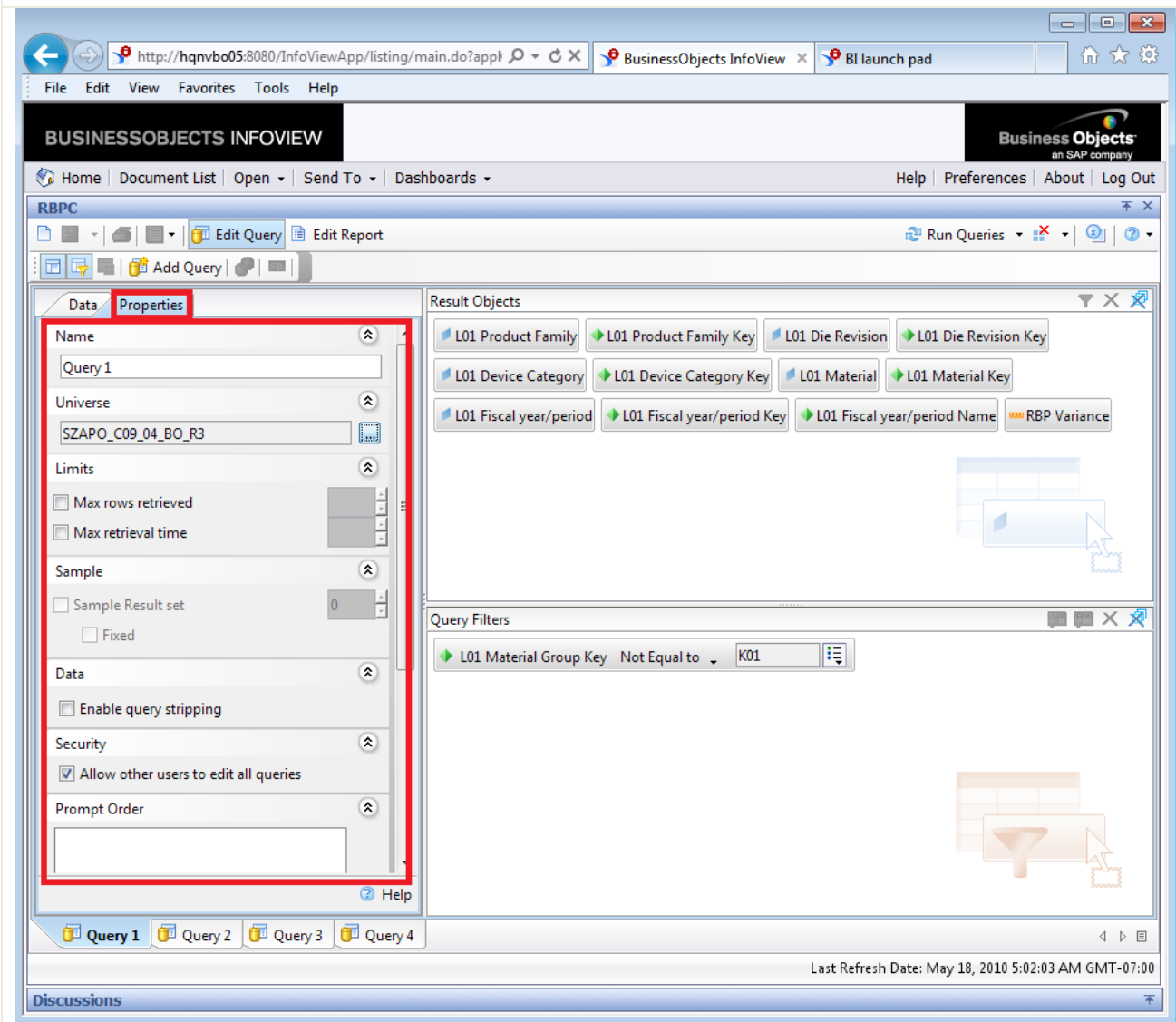
Queries can be purged using the Purge option as shown :



Interface as seen in BusinessObjects XI 3.1

Query Properties

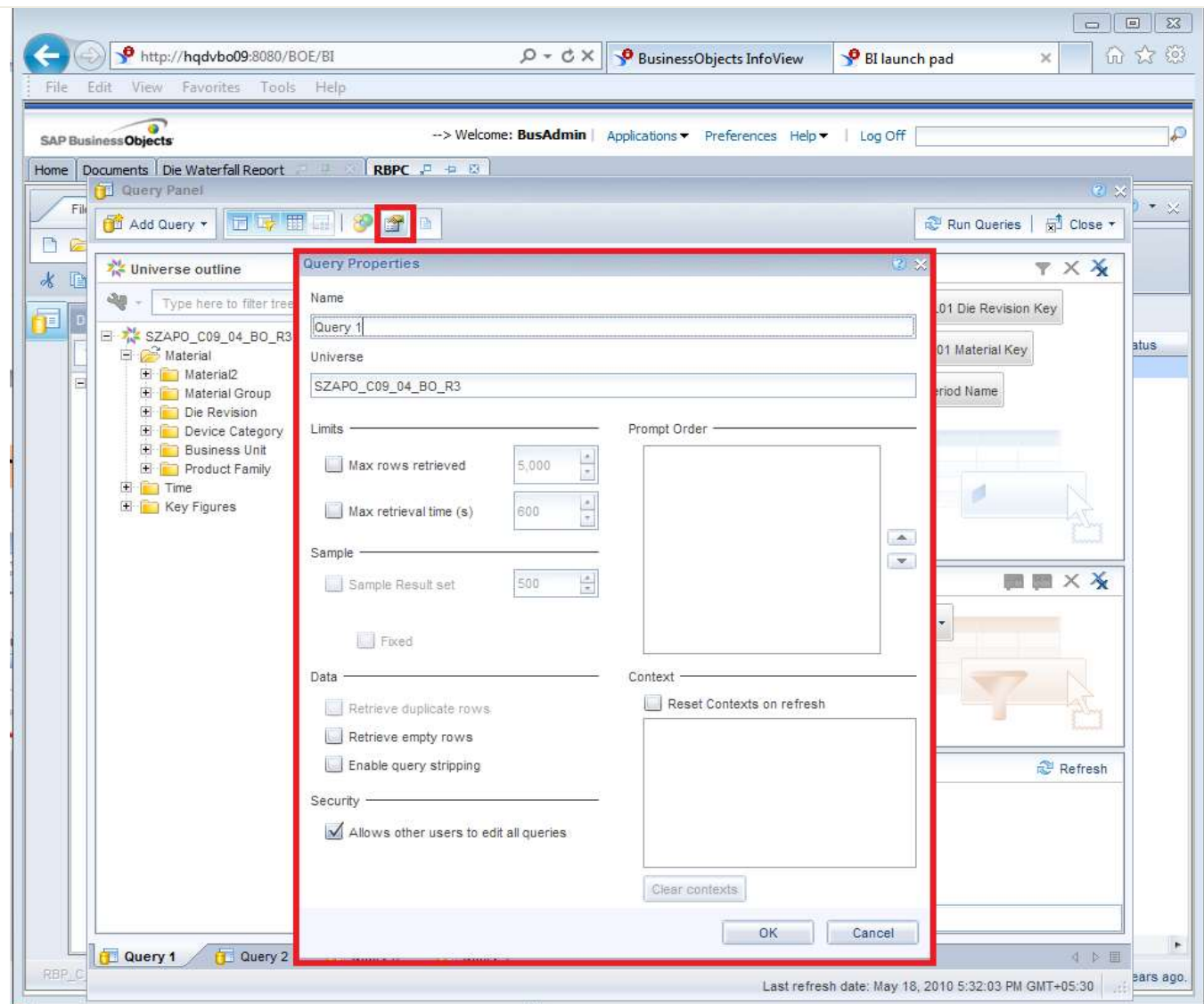
The query properties are displayed beside the Query Panel as shown below:



Interface as seen in Business Objects BI 4.0

Query Properties

The query properties are displayed in a separate window as shown :



Interface as seen in BusinessObjects XI 3.1

Interface as seen in Business Objects BI 4.0

Repointing the Universe

Repointing the Universe

The universe of the existing queries can be repointed by browsing for the required universe from the query properties window as shown below:

The universe can be repointed using the Change Source option as shown below:

