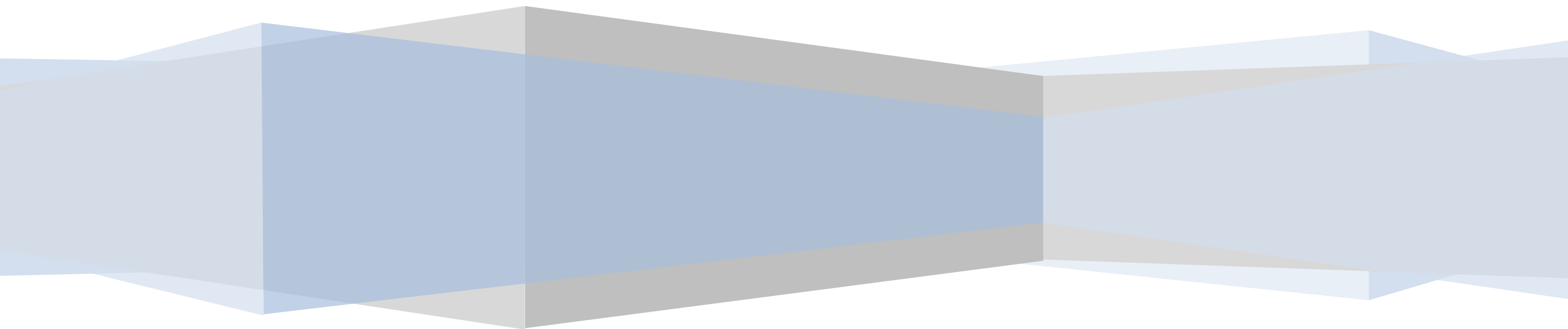


# Comparative Study of the Features of SAP BusinessObjects 3.1 and SAP BusinessObjects BO 4.0

Pooja Choubey



*Contents*

**Opening Web Intelligence Reports**

Creating a New Web Intelligence Document..... 3

Opening Existing WebI Reports ..... 4

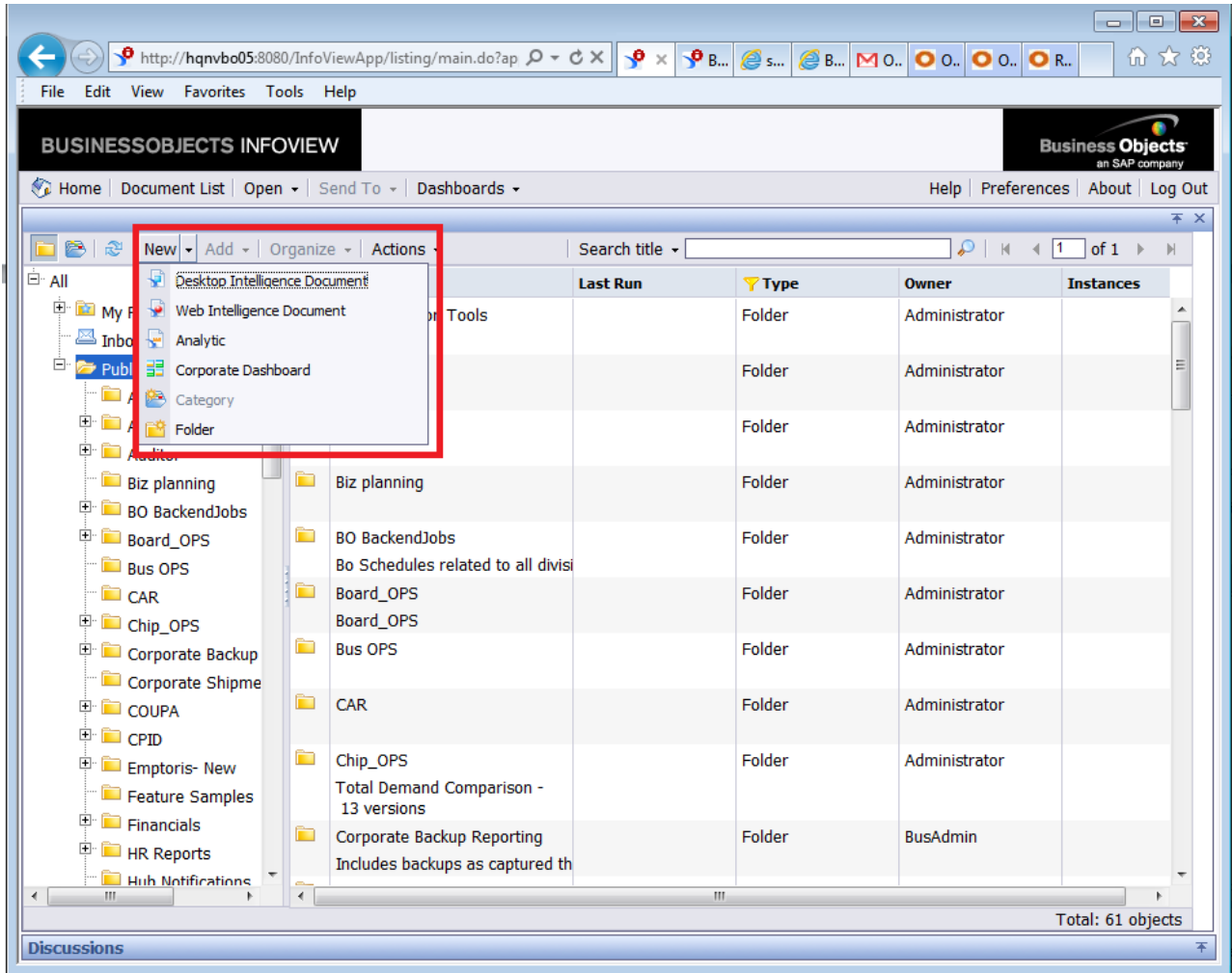
Options on Right Click ..... 5

Opening a Report ..... 6

## Interface as seen in BusinessObjects XI 3.1

### Creating a New Web Intelligence Document

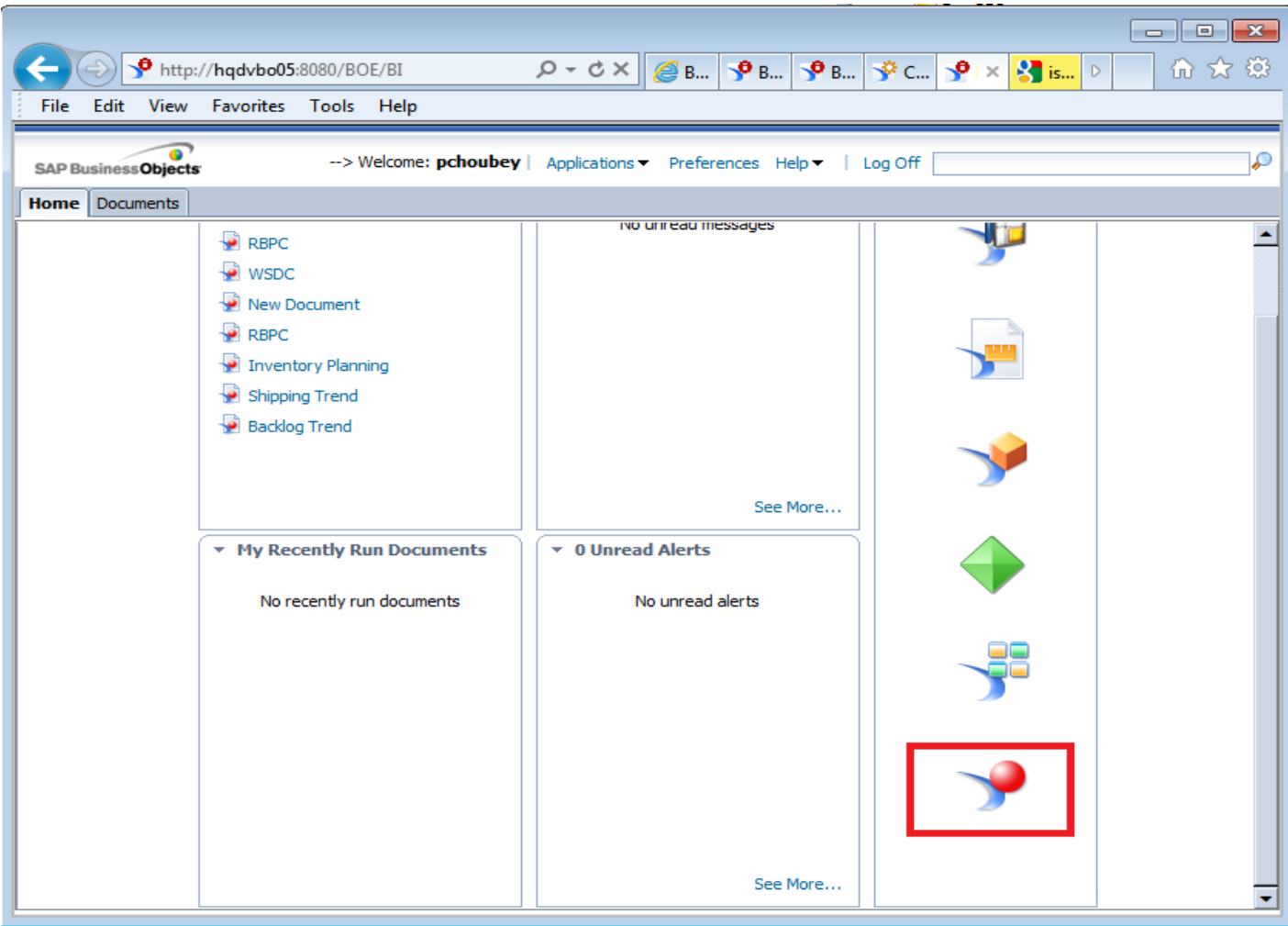
A WebI report can be created following menu path New > Web Intelligence Document on the document list page as shown:



## Interface as seen in BusinessObjects 4.0

### Creating a New Web Intelligence Document

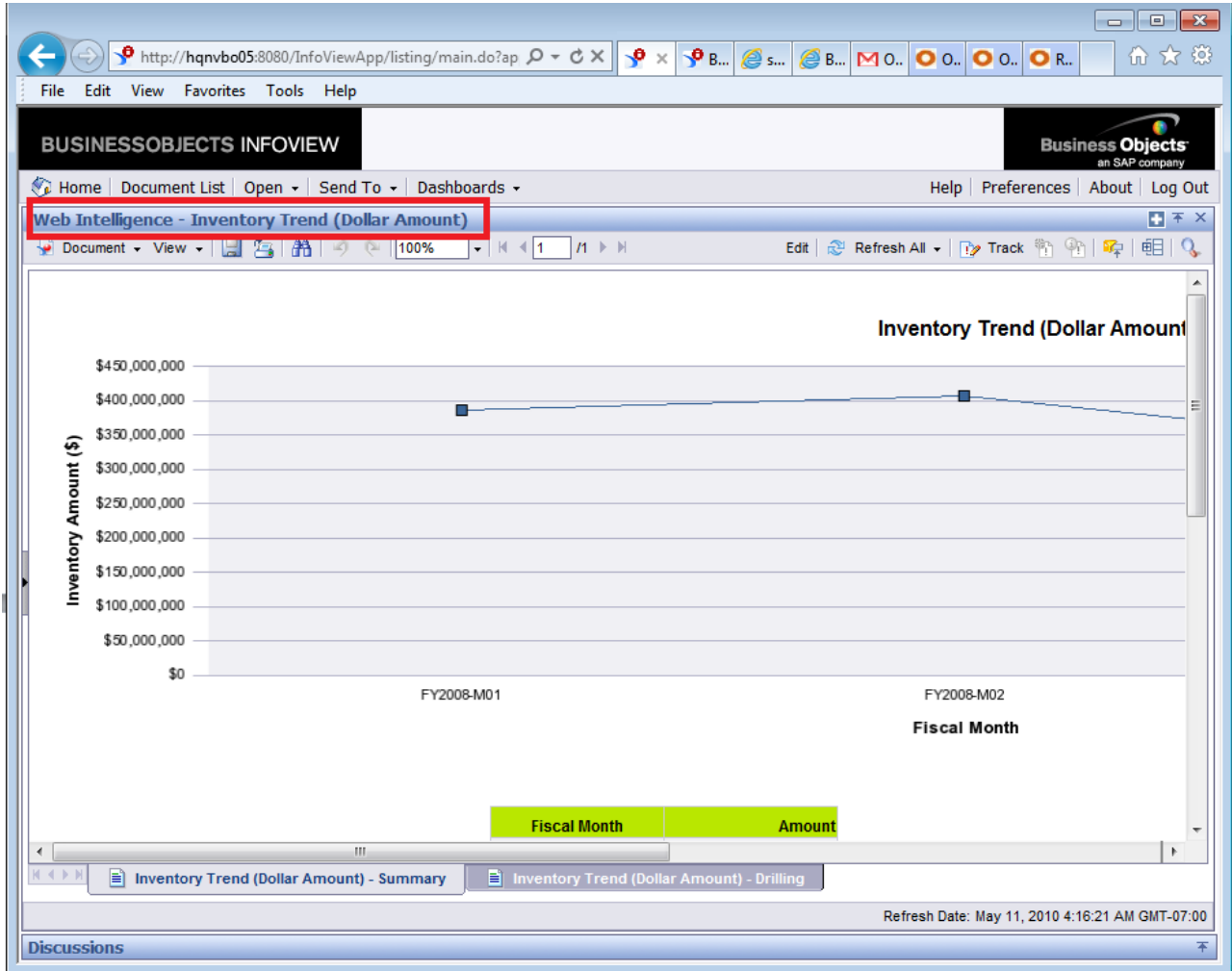
To create a new WebI report, navigate to the home page and launch WebI using the WebI icon provided on the left hand side in the My Applications Tab.



## Interface as seen in BusinessObjects XI 3.1

### Opening Existing WebI Reports

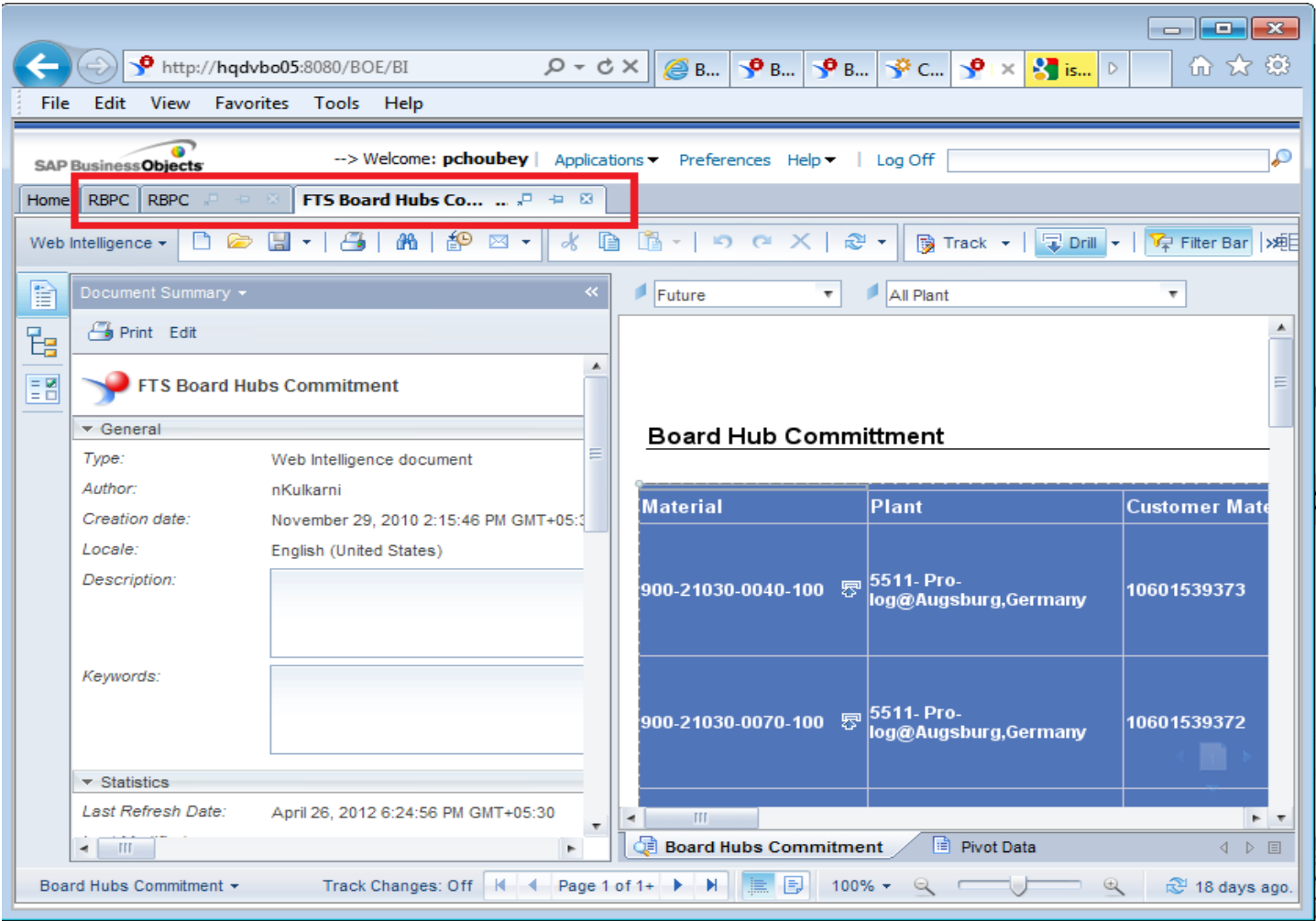
Existing WebI reports can be opened by accessing the Public Folders. However, only one report can be opened at any given time.



## Interface as seen in BusinessObjects 4.0

### Opening Existing WebI Reports

Two or more reports can be opened simultaneously. The reports open as tabs, which provides easier navigation.

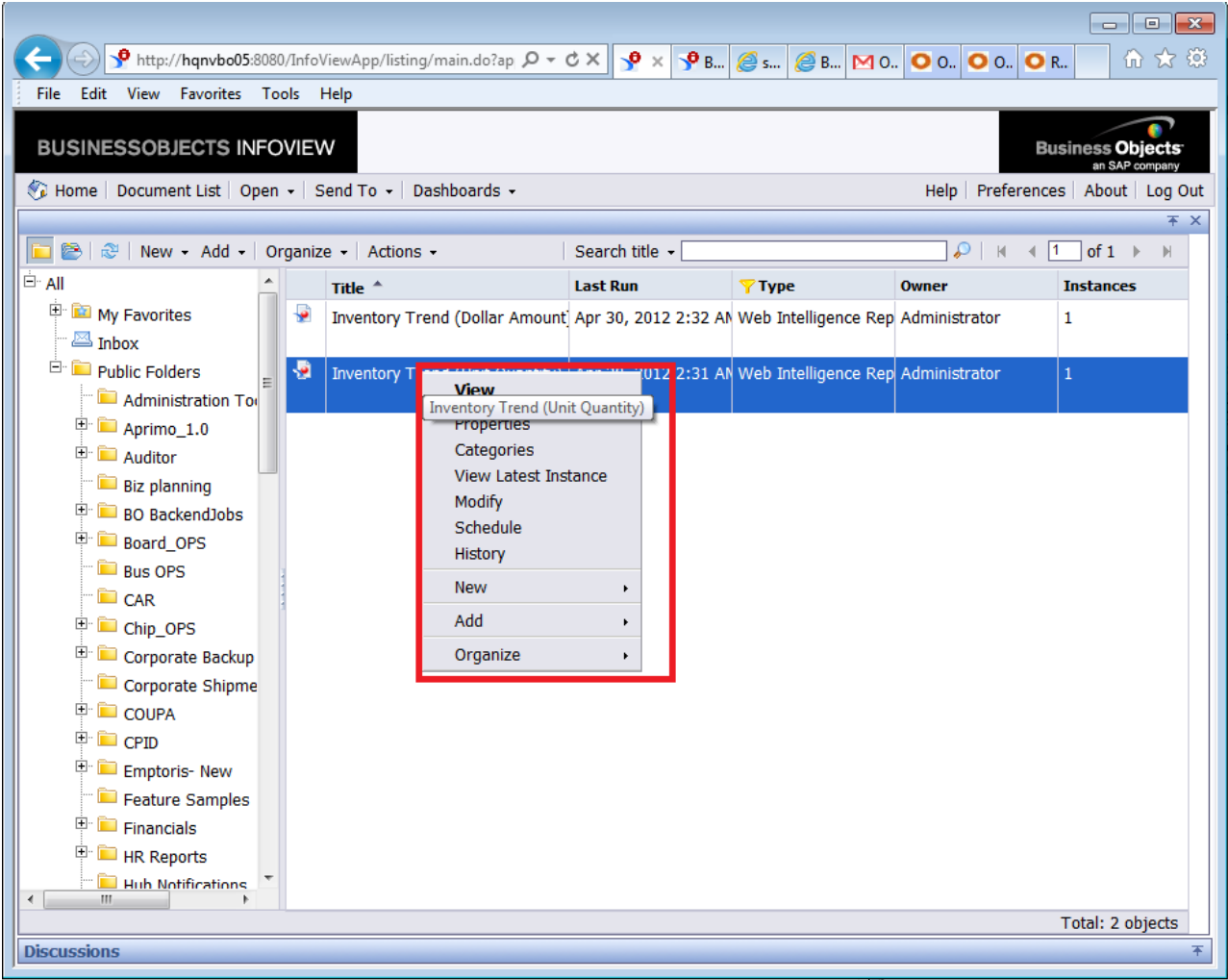


## Interface as seen in BusinessObjects XI 3.1

### Options on Right Click

The WebI report can be opened either by double-clicking it or by right-clicking and choosing View. Along with View, there are a few other options like Properties, Categories, View Latest Instance, and Organize as shown below:

\*Reports open in Refresh on Open mode when you double-click a report.

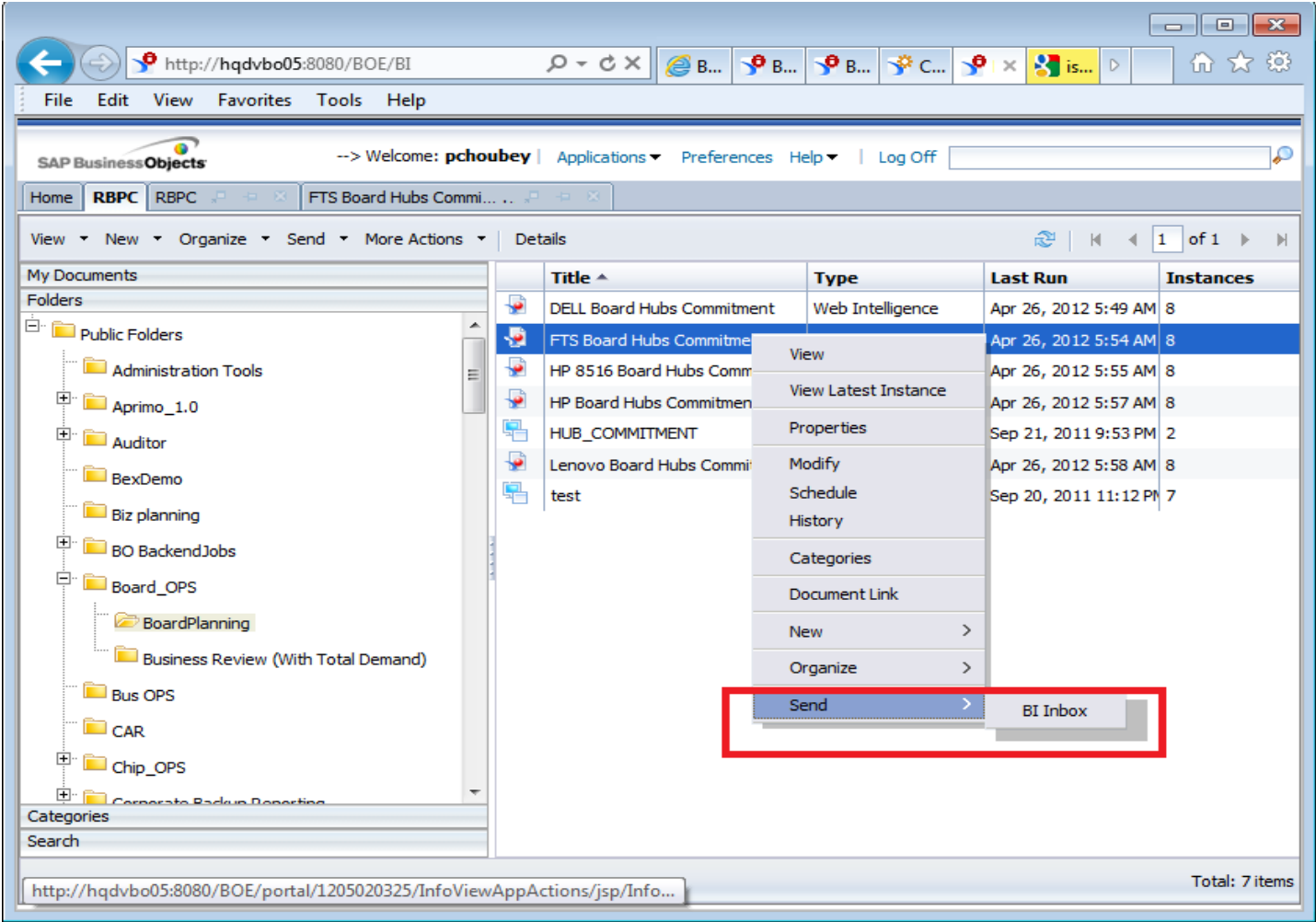


## Interface as seen in BusinessObjects 4.0

### Options on Right Click

Reports can be opened in the same manner as in XI.3.1. Here along with the usual option of right-clicking to View Report, there is a new option Send > BI Inbox as shown below:

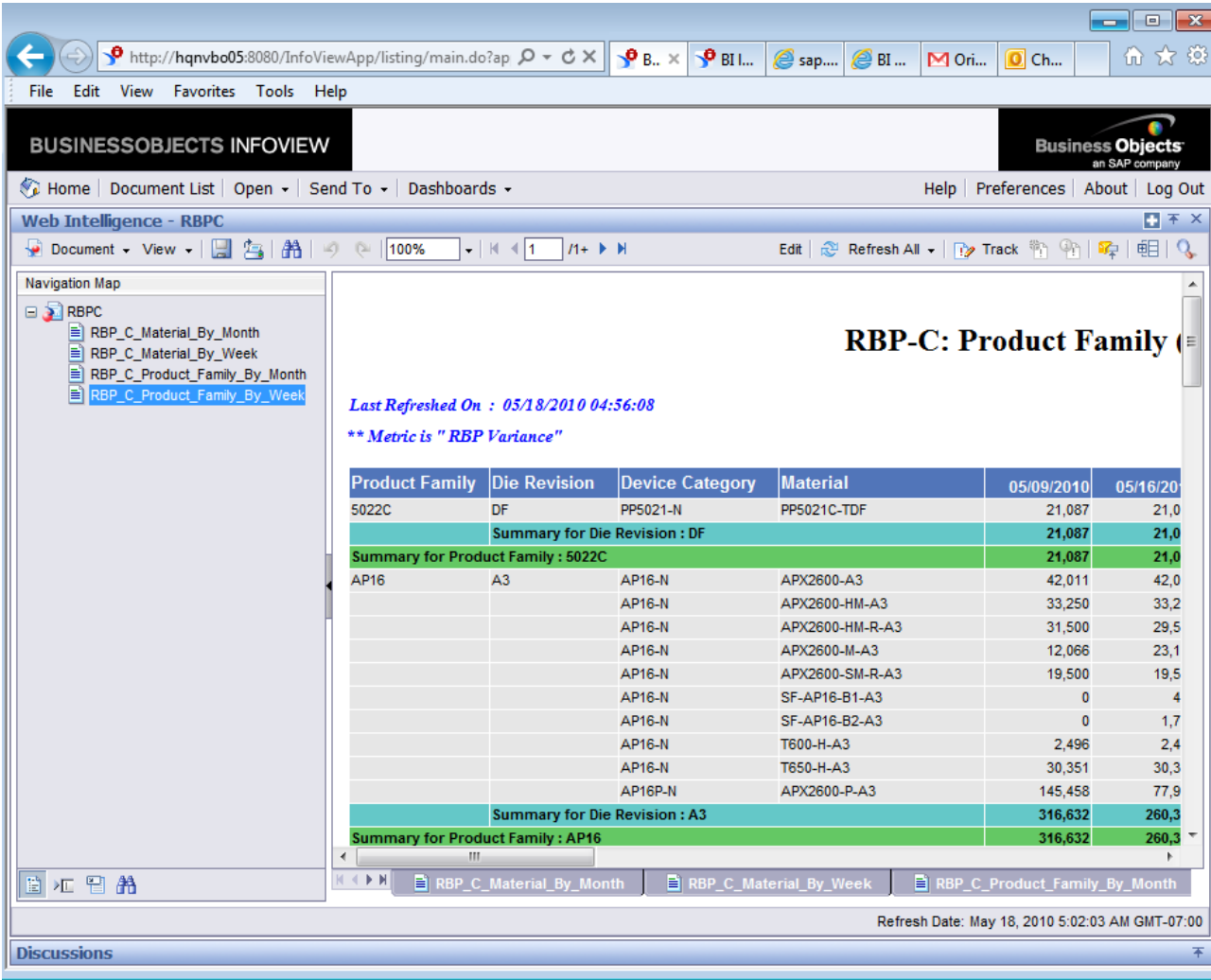
\*Double-clicking a report opens it in the View mode. The Refresh on Open Mode get activated when the report is opened using right click > View.



Interface as seen in BusinessObjects XI 3.1

Opening a Report

The report opens in View mode and in HTML format by default.



Interface as seen in BusinessObjects 4.0

Opening a Report

The report opens in Reading mode. In this mode, you have options to view the report in HTML or PDF as shown below:

